



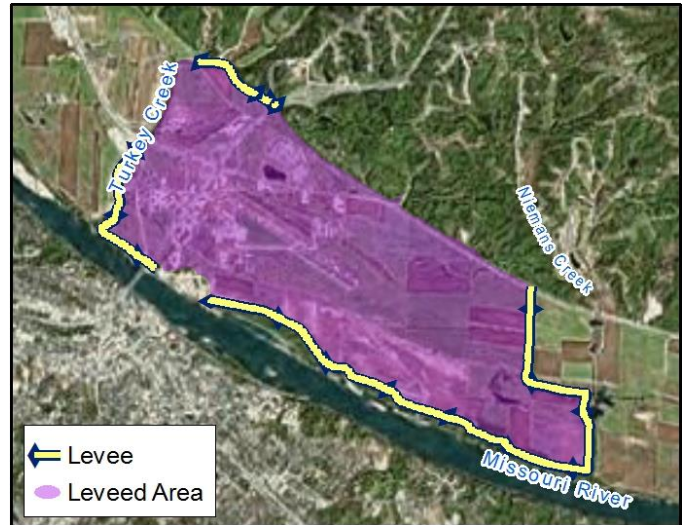
Levee System Summary Capital View Callaway County, Missouri

U.S. ARMY CORPS OF ENGINEERS

BUILDING STRONG®

June 10, 2019

Project Description: The Capital View project is a levee system that reduces occurrence of flooding for approximately 3,300 acres of Missouri River floodplain in Callaway County, Missouri. The levee system includes 37.3 miles of earthen levee and 9 gravity drains. The levee is operated and maintained by the local sponsor, Capital View Drainage District. The area behind the levee is predominately agricultural with some residences, associated farm structures, and commercial development. The leveed area daytime population is 600 and estimated property value is approximately \$ 4.8 Million. The levee faced record flooding in 1993 when the levee overtopped.



A risk assessment was completed by USACE to identify risk factors for this levee system and to determine what actions would best manage the overall risk. The risk associated with a levee system is based on a combination of the likelihood of flooding, the expected performance of the levee during floods, and the number of people and structures located behind the levee.

Risk Characterization: The Levee Safety Action Classification (LSAC) is based on a combination of the flood hazard frequency, the anticipated levee performance, and the potential consequences. The Low Risk classification is mainly being driven by the estimated population and structures at risk that are low in comparison to other levees across the nation in the USACE levee safety program. The 2015 screening level risk assessment found overtopping to be the biggest risk driver for this levee. This levee overtopped and breached in 2019 and the leveed area was inundated. The levee performed as designed until water exceeded the design and overtopped the levee. The local levee sponsor and USACE are working together on repairing damages.

**What is driving the risk?
(Listed in order of priority)**

**What is being done about it?
(Risk Management)**

Emergency action plans, including evacuation plans, have not been developed.	USACE has advised levee sponsor(s) to develop emergency action plans, including evacuation plans.
Aging levee system requires ongoing inspections and repair or replacement of levee components.	Levee sponsor is performing operations and maintenance activities to address levee issues. USACE is advising levee sponsor regarding prioritization of most critical issues. The levee is regularly inspected and monitored to identify and address issues.

What is Important to Know? Levees reduce the risk of flooding, but do not eliminate it. USACE works with Callaway County, Missouri to assess, manage, and communicate levee risks. USACE recommends residents

and business owners develop their own emergency plans, follow instructions from local officials during flood emergencies, and encourage elected officials to make sound flood risk management decisions.

Levee Specific Information

Latest Inspection Date:	Routine Inspections were completed on July 30 th in 2014.
Rehabilitation Program Eligibility Status:	This levee is Active in the USACE Rehabilitation Program. Should it be damaged by a flood, it is eligible for assistance from USACE to repair damages.
National Flood Insurance Program Status:	This levee has not been accredited by FEMA. The leveed area is shown on the Flood Insurance Rate Map (FIRM) panels listed below. 29027C0530E effective 09/5/2012 29051C0134E effective 11/2/2012 29027C0510E effective 09/5/2012 29051C0131E effective 11/2/2012 29051C0133E effective 11/2/2012 29051C0132E effective 11/2/2012

Ongoing Activities and Studies: Local sponsor is actively maintaining their levee.

Who Can I Contact? Information concerning this levee system may be obtained by contacting the following entities:

Local Emergency Management Agency	Callaway County Emergency Management 573-592-2480
Levee Sponsors	Capital View Drainage District
FEMA National Flood Insurance Program	FEMA Region: VII FEMA Region Contact: FEMA Map Service Center website: https://msc.fema.gov/ FEMA Map Information eXchange (FMIX): 1-877-336-2627 (toll-free), or email at: FEMAMapSpecialist@riskmapcads.com https://www.fema.gov/living-levees-its-shared-responsibility
National Levee Database	https://levees.sec.usace.army.mil

**FLOOD RISK ASSOCIATED WITH LEVEES IS DYNAMIC
 Know your risk, know your role, and take action!**

U.S. ARMY CORPS OF ENGINEERS – KANSAS CITY DISTRICT
 601 E. 12TH ST, KANSAS CITY, MO 64106
<http://www.nwk.usace.army.mil/>