

City of Columbia Council Work Session

Monday, February 17, 2020

COUNCIL WORK SESSION FEBRUARY 17, 2020

Solid Waste Division

Ordinance and Operational Practice
Conflicts

Possible Changes for Consideration

Staffing Issues and Potential Service
Reductions



SECTION 22-159. – RESIDENTIAL CUSTOMERS

(i) *Dimensions and weight.* All material for collection must be in a bag, disposable containers, or securely bound bundles not greater than four (4) feet in length, two (2) feet in diameter, and shall not exceed fifty (50) pounds total weight each.

COUNCIL WORK SESSION FEBRUARY 17, 2020



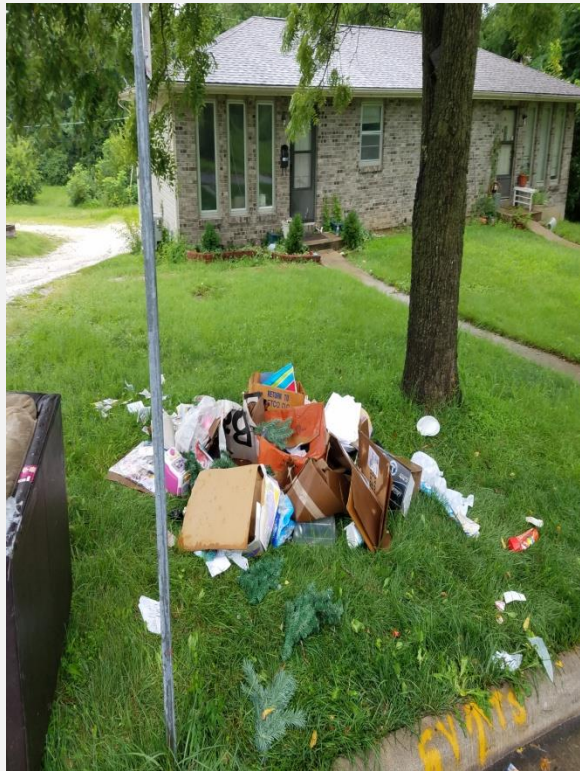
COUNCIL WORK SESSION FEBRUARY 17, 2020



COUNCIL WORK SESSION FEBRUARY 17, 2020



COUNCIL WORK SESSION FEBRUARY 17, 2020



SECTION 22-159. – RESIDENTIAL CUSTOMERS

(k) *Special pickup.* A special pickup for residential customers will be provided on a continuous basis at no additional charge. This service is intended for disposal of quantities or items which are too large for regular pickup. All material for special collection shall be placed in a visible and easily accessible location not to extend more than fifteen (15) feet from the back of curb, edge of roadway or immediately adjacent to an alley, as the case may be. Materials resulting from the erection, destruction or major remodeling of a building, felled trees, large automobile parts, hazardous materials, etc., and items which cannot be handled by the special collection crew will not be picked up. Material meeting the special pickup criteria but placed for collection by owners of commercial businesses or rental property will be collected based on the commercial hand pickup service charge, provided previous arrangements are made.

CHANGES FOR CONSIDERATION

- Staff should not pick up items that are not in bags or bundles
- Limit the total number of bags and/or bundles that can be disposed each week.
- Eliminate special pickup and require use of containers when excessive amounts of refuse need to be disposed.
- Retain special pickup change requirements to include:
 - All items to be placed in bags, disposable containers or bundled, except bulky items, a chair for example.
 - Special pickup must be scheduled.
 - Institute a charge similar to commercial hand pickup.

- **SECTION 22-161. – COMMERCIAL SERVICE.**

(b) (1) Commercial hand pickup:

b. The service charge for hand pickup of businesses or commercial places, boarding and rooming houses, fraternities and sororities, shall be at the rate of three dollars and twenty-three cents (\$3.23) per collection minute, or a minimum of five (5) minutes which is equivalent to sixteen dollars and seventeen cents (\$16.17) per occurrence.

c. Commercial customers served by hand pickup service, shall conform to container capacity of twenty (20) to thirty-three (33) gallons and weighing, with contents when full, not over fifty (50) pounds, or the equivalent thereof.

- **STAFFING ISSUES**

- 12 vacancies in refuse collector positions. Staff injuries further reduce personnel available for duty.
- Currently, there are 14 staff available with the required CDL for curbside collection of refuse and recycling.
- 13 drivers are required each day.

- **STAFFING ISSUES (continued)**
- When less than 13 drivers, routes must be split and/or supervisors must driver the routes.
- 10 or fewer drivers results in the need to cancel curbside collection of recyclable materials.
- Ongoing issue, it appears cancellation will be necessary more frequently in the future.



city of

Columbia