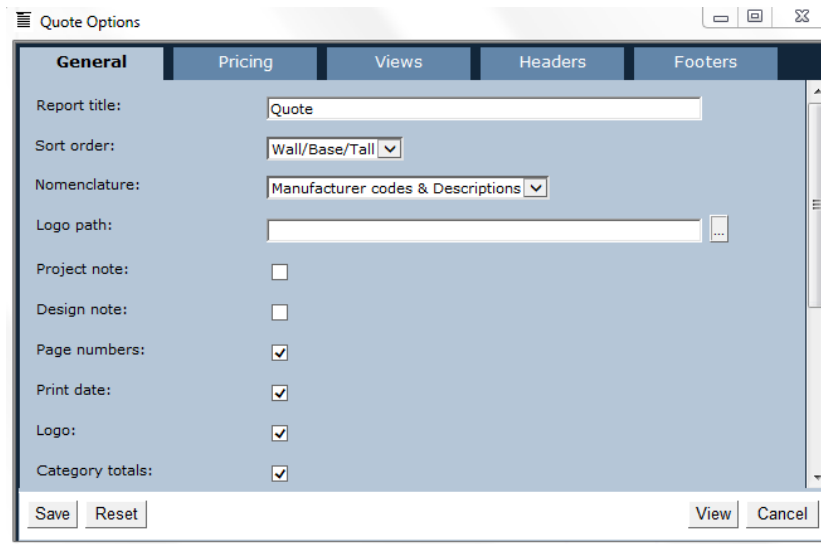


How To Export a 20-20 Design into Order Express

1) Generate a 20-20 Quote through the Reports module inside 20-20. Under Reports \Quote , make sure selections are exactly as shown below. Click View.



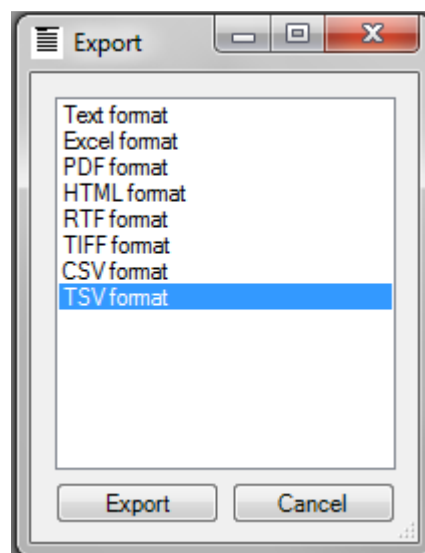
The screenshot shows the 'Quote Options' dialog box with the 'General' tab selected. The dialog has a title bar with a menu icon and window controls. Below the title bar are tabs for 'General', 'Pricing', 'Views', 'Headers', and 'Footers'. The 'General' tab contains the following fields and options:

- Report title: Text input field containing 'Quote'.
- Sort order: Dropdown menu showing 'Wall/Base/Tall'.
- Nomenclature: Dropdown menu showing 'Manufacturer codes & Descriptions'.
- Logo path: Text input field with a browse button (...).
- Project note:
- Design note:
- Page numbers:
- Print date:
- Logo:
- Category totals:

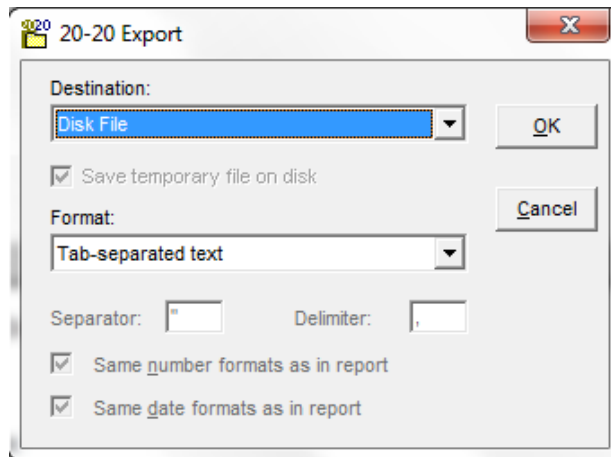
At the bottom of the dialog are buttons for 'Save', 'Reset', 'View', and 'Cancel'.

2) Once the quote has generated, click the **Export** button.

3) If using version 10 or 11 of 20-20, select **TSV format** as the format output.



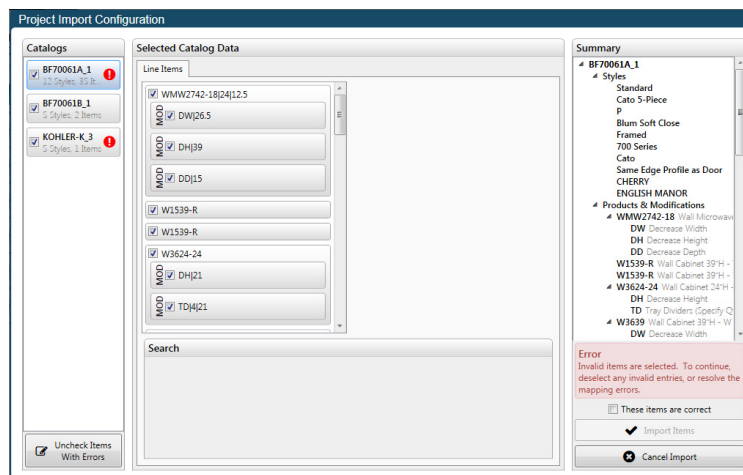
If using version 8 or 9 of 20-20, select **Disk File** and **Tab Separated Text**.



- 4) Save the .TSV (or .TTX if version 8 or 9) file to somewhere on your computer. Possibly the Desktop or My Documents if using a PC.
- 5) Open up and log into Order Express on your machine (if not already open).
- 6) Click on Project Manager.

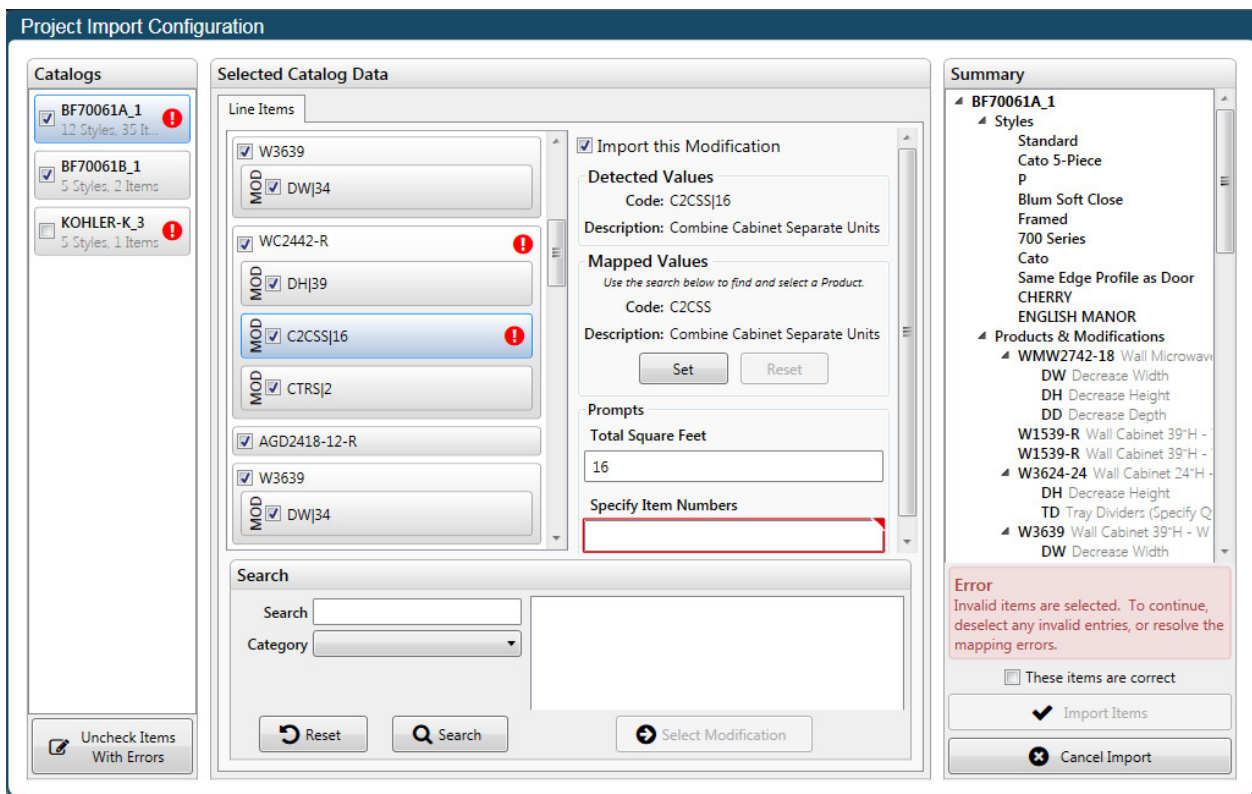


- 7) Select **the Import a Project** icon
- 8) Browse to the location of where you saved the .TSV or .TTX file on your computer. Click **Open**.
- 9) The *Project Import Configuration* window will show up along with all the items and modifications from your 20-20 Design. De-select any catalogs that are not Bremtown (ie: appliance manufacturers, Kohler, etc.).



Note: At this time, any items added to the Accessories section of the Item List in 20-20 do not come through on the Export/Import. You will need to re-add them manually to Order Express.

10) Click on any Bremtown catalogs giving a warning and find the item that has the associated warning icon. Enter in the additional information for this item that Order Express is requesting or needs. Do this for any Bremtown cabinetry items requiring additional information. Once complete, click the box next to *These items are correct*. Click **Import Items**.



You have successfully imported your 20-20 design into Order Express. Review the quote for accuracy and add any items that may not have carried over (see Note above).