



Gas Detection For Life

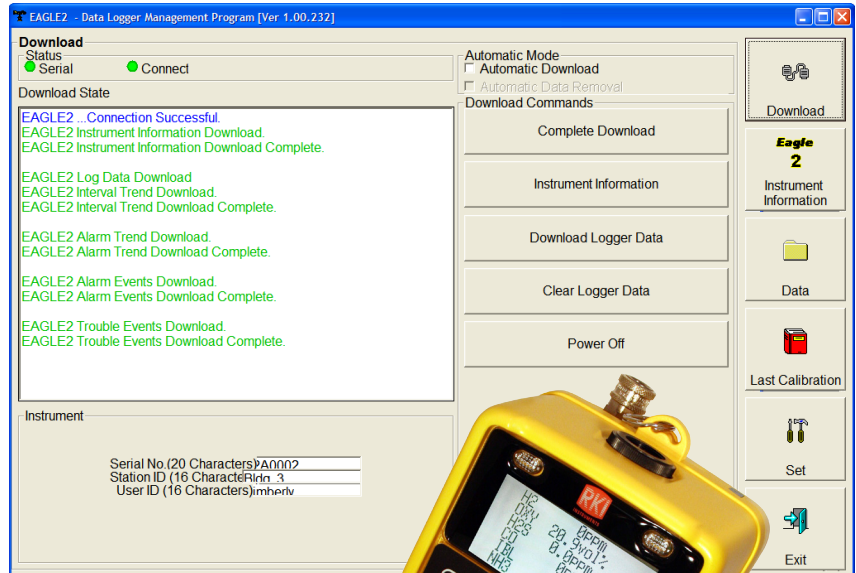
FAQ

June 19, 2013

What is the data-logging capacity of the Eagle 2?

The Eagle 2 data-logging capacity is dependent on the interval trend setting, number of sensors installed, and number of alarms or other events.

The following chart of the Eagle 2 data-logging capacity is for an Eagle 2 standard four gas unit with no alarms or events. Additional sensors, alarms or events will reduce the listed data-logging capacity.



INTERVAL TREND TIME

- 5 seconds
- 10 seconds
- 20 seconds
- 30 seconds
- 60 seconds
- 180 seconds (3 minutes)
- 300 seconds (5 minutes)
- 600 seconds (10 minutes)

DATA-LOGGING HOURS

- 239 hours (10 days)
- 479 hours (20 days)
- 959 hours (40 days)
- 1,439 hours (60 days)
- 2,879 hours (120 days)
- 8,639 hours (360 days)
- 14,399 hours (600 days)
- 28,798 hours (2,000 days)



The Eagle 2 can store the following files in addition to standard interval trend data:

1. Save up to 100 calibration records.
2. Save up to 8 alarm trend data files.
3. Save up to 100 alarm events.
4. Save up to 100 trouble events.