

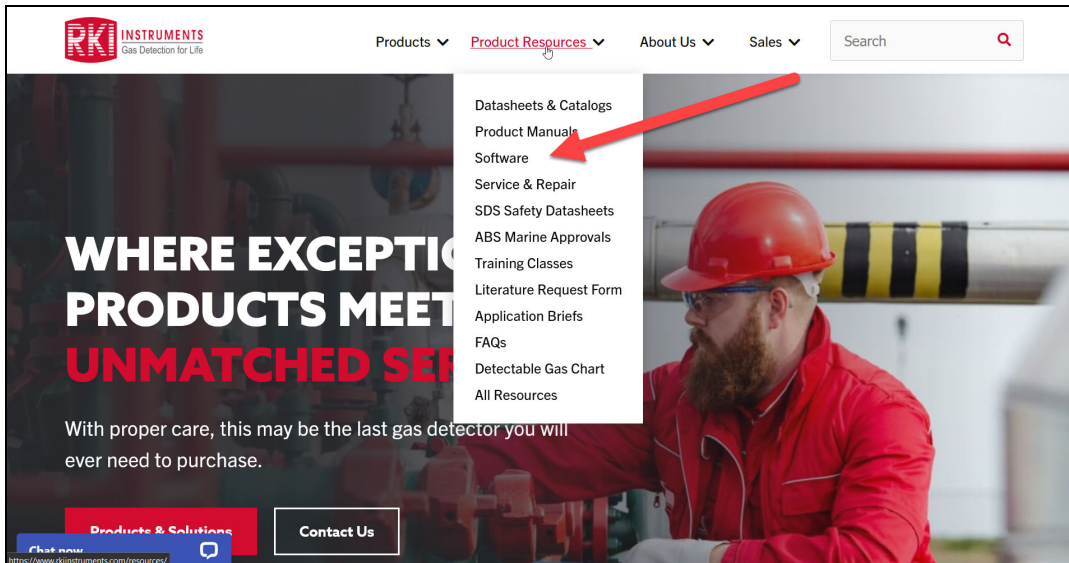
# IrDA Cable Driver Installation Guide

Document Part Number: 71-0658

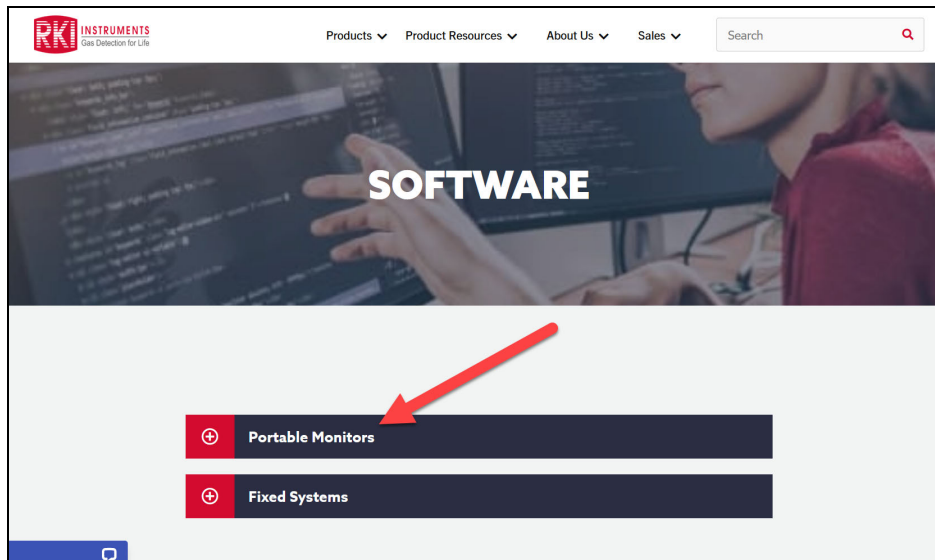
Revision: P1

Released: 2/1/24

1. Navigate to the RKI Instruments, Inc. website: <https://www.rkiinstruments.com/>
2. Move the cursor over **Product Resources** in the website header.
3. Click on **Software** from the dropdown menu.



4. Click on **Portable Monitors** to open the list of downloads.

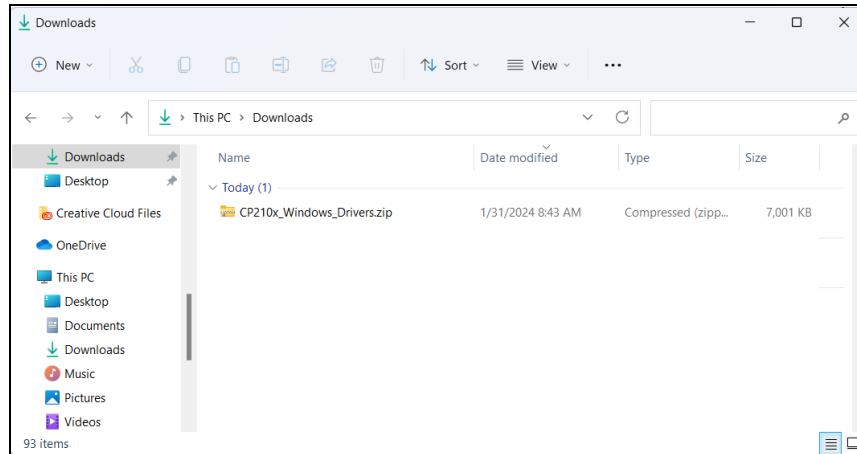


5. Click on **IrDA Drivers** to download the program .zip folder.

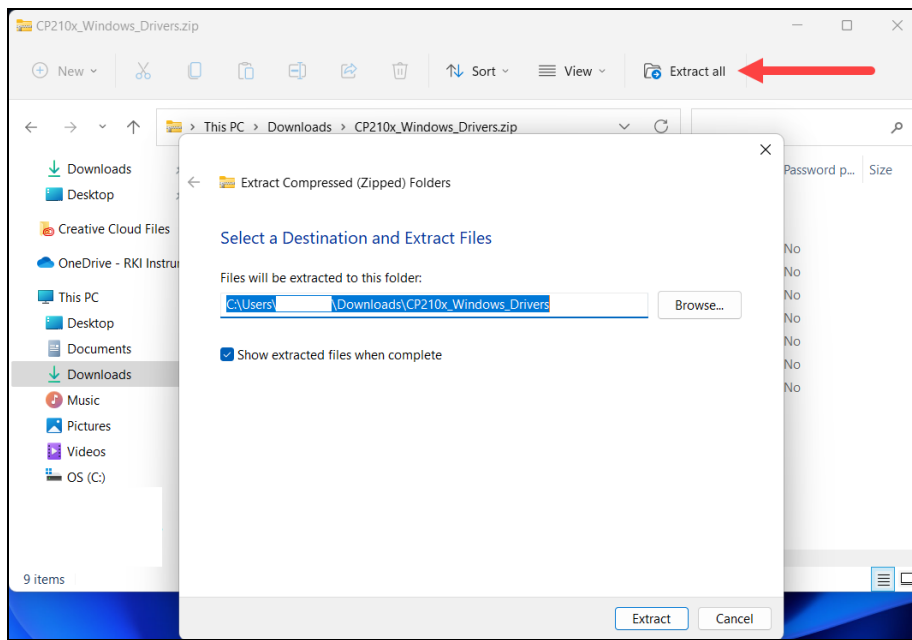
The screenshot shows a table of software downloads under the 'Portable Monitors' category. The 'IrDA Drivers' row is highlighted with a red arrow.

| Program Name                 | Description                                | Version | File size     |
|------------------------------|--|---------|---------------|
| <b>IrDA Drivers</b>          | IrDA cable drivers for Part # 47-5084RK-01 | 6.7.6   | <b>7.2 MB</b> |
| <b>03-Series Datalogging</b> | Datalogging Software                       | 04710   | <b>29 MB</b>  |
| <b>03-Series User Setup</b>  | User Setup                                 | 04713   | <b>4 MB</b>   |

6. After the .zip folder finishes downloading, open File Explorer and navigate to the **Downloads** folder.



7. Right-click on the folder and select **Extract All** or open the folder. A prompt will appear. Enter the desired location for saving the extracted files.



8. A new window will appear, displaying the newly extracted files in the location entered in the previous step. Double-click on the appropriate .exe file for your computer to begin installation.

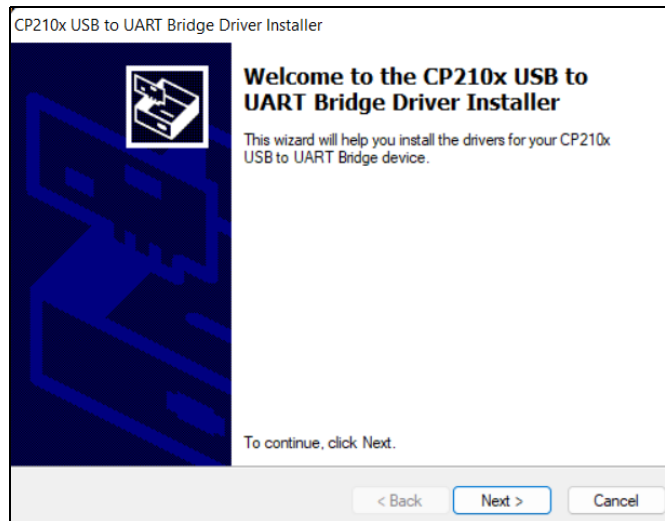
# IrDA Cable Driver Installation Guide

Document Part Number: 71-0658

Revision: P1

Released: 2/1/24

9. Proceed through the on-screen installation process using the driver installer.



10. Click **Finish** to exit the installer.