



**INSTRUMENTS**

# **RK Link App User Manual**

*Part Number: 71-0694*

*Revision: P1*

*Released: 2/25/25*

**RKI Instruments, Inc.  
[www.rkiinstruments.com](http://www.rkiinstruments.com)**

# ***WARNING***

Read and understand this instruction manual before operating instrument. Improper use of the gas monitor could result in bodily harm or death.

Maintenance of the gas monitor is essential for proper operation and correct readings.

Bump test the instrument before each day's use with a known concentration of each target gas. A bump test can be done in User Mode's BUMP TEST item or by applying gas in Measuring Mode. The instrument does not need to be calibrated unless it does not pass the User Mode bump test or does not respond appropriately, as defined by the user, in Measuring Mode. For more information about bump test and calibration requirements, see IEC 60079-29-2.

## GX-3R Pro Quick Reference Guide

**Turn On**  
Press & Hold

**POWER  
MODE**

**Past Due Bump/CAL**

To Bump / CAL **POWER  
MODE**

Confirm & Use **AIR**

7:49	📶	🔋
CONFIRM TO USE USER MODE:MODE NO :AIR		
BUMP DATE PAST		
7:49	📶	🔋
CONFIRM TO USE USER MODE:MODE NO :AIR		
CAL DATE PAST		

**Normal  
Operation**

After brief  
warm-up period

7:49	📶	🔋			
CH4	%LEL	CO	ppm	H2S	ppm
0	0	0.0			
O2	%	CO2	vol%		
20.9		0.00			

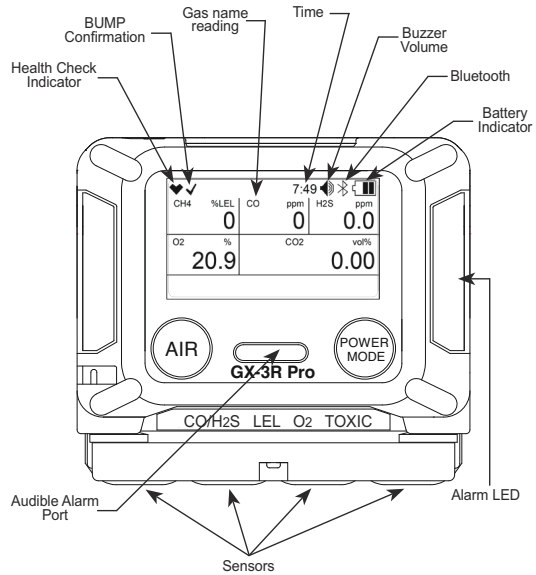
**Fresh Air**  
Press & Hold

**AIR**

**Turn Off**  
Press & Hold

**POWER  
MODE**

## GX-3R Pro Quick Reference Guide



Scan QR code for  
GX-3R Pro Manual

RKI Instruments, Inc. 33248 Central Ave, Union City, CA 94587  
Phone (510) 441-5656 • (800) 754-5165 • www.rkiinstruments.com  
190523/1000



## Statement of Quality and Conformance

RKI Instruments, Inc. certifies that this instrument has been tested, inspected, and calibrated by a qualified technician and was found to meet or exceed the manufacturer's specifications per ISO 9001 Quality System.

**Register your Product here:**  
[www.rkiinstruments.com/registration](http://www.rkiinstruments.com/registration)

RKI Instruments, Inc. • 33248 Central Avenue, Union City, CA 94587  
Phone: (510) 441-5656 • (800) 754-5165 • Fax: (510) 441-5650  
[www.rkiinstruments.com](http://www.rkiinstruments.com)

---

# Table of Contents

- Installing the App . . . . . 5**
- Important Setup Notes . . . . . 5**
- Pairing a GX-3R Pro . . . . . 5**
- Searching for a Paired GX-3R Pro . . . . . 8**
- Disconnecting a Paired GX-3R Pro . . . . . 9**
- Measuring Mode . . . . . 9**
- Adjusting App Notification Settings . . . . . 10**
- Defining Owner Information . . . . . 12**
- Saving Snapshots . . . . . 14**
- Setting Up Email/Text Alerts . . . . . 21**
- Changing GX-3R Pro Parameters . . . . . 31**
  - Alarm Settings . . . . . 33
  - Calibration and Bump Settings . . . . . 34
  - Backlight Setting . . . . . 36
  - Logger Data Settings . . . . . 37
- Viewing Data Logs . . . . . 38**
- Viewing Serial Number, IDs, and Bump/Cal Information . . . . . 38**
- Viewing App Version Info . . . . . 41**

---

## Installing the App

1. Download and install the “RK Link” app from the App Store (for iOS) or Google Play (for Android).
2. Launch the RK Link app.
3. Allow access to device location.
4. Allow access to contacts.
5. Allow access to photos, media, and files.

---

## Important Setup Notes

1. Make sure no other Bluetooth devices are connected to your phone.
2. Make sure the phone’s location services are turned on. If they’re not, the coordinates in the alert emails/text messages will be blank.

---

## Pairing a GX-3R Pro

Multiple instruments cannot be paired with the same phone. Similarly, one instrument cannot be paired with multiple phones.

If a paired GX-3R Pro is turned off, it must be paired with the app again when it is turned back on.

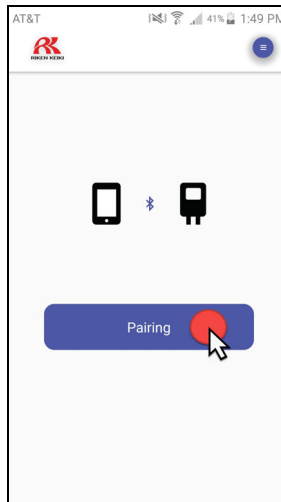
If the app is closed while a GX-3R Pro is paired, the GX-3R Pro must be paired with the app again when the app is reopened.

1. Open the RK Link app.
2. Be sure your GX-3R Pro is turned on.
3. Be sure the GX-3R Pro’s Bluetooth is turned on in the Display Mode.

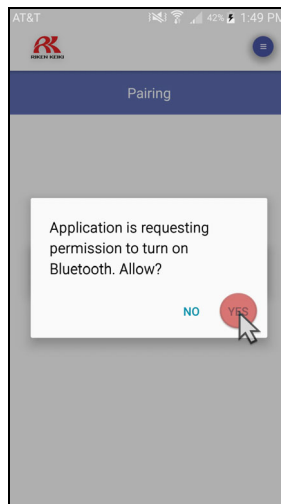
If **BLE Auto Shut Off When Idle**, accessible in the Datalogging or SDM-3R Program, is **selected** (factory setting) and if the GX-3R Pro does not pair to a phone in the first 5 minutes after startup, the GX-3R Pro’s Bluetooth gets shut off to conserve battery life. If you are having trouble pairing your GX-3R Pro, the Bluetooth may have timed out.

If **BLE Auto Shut Off When Idle**, accessible in the Datalogging or SDM-3R Program, is **deselected** and if the GX-3R Pro does not pair to a phone, the GX-3R Pro’s Bluetooth stays on indefinitely.

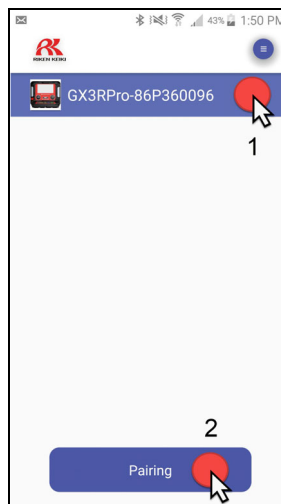
4. Press “Pairing”.



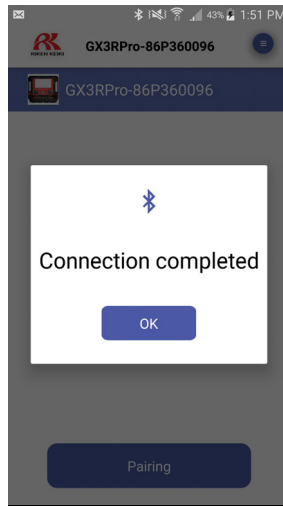
5. If your phone’s Bluetooth is not turned on, the app will prompt you to turn it on. Press “Allow”. Then press “Pairing” again.



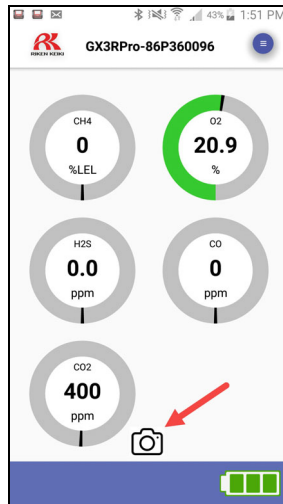
6. Select the GX-3R Pro you’d like to pair with then press “Pairing”.



7. A “Connection completed” message appears once the GX-3R Pro is connected to your phone. Press “OK”.



8. The Measuring Mode screen appears.



---


# Searching for a Paired GX-3R Pro

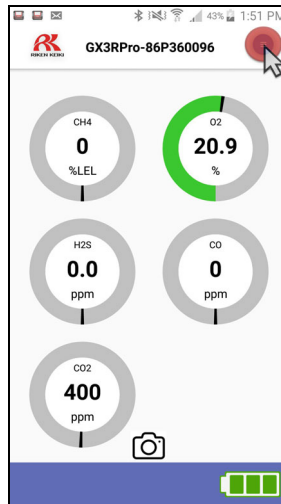
Using the app's detector search function allows you to find a connected GX-3R Pro that may have been set down somewhere.

---

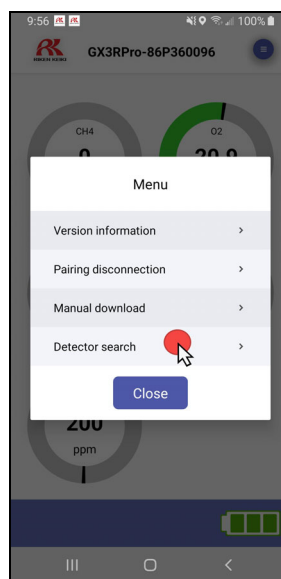
**NOTE:** This feature does not work if the GX-3R Pro is operating in stealth mode.

---

1. Press the  button in the upper right corner of the app.




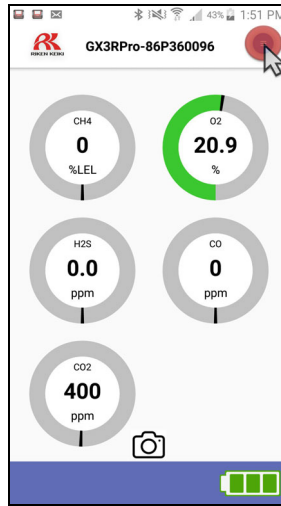
2. If necessary, scroll down to make "Detector search" visible.
3. Press "Detector search". The GX-3R Pro's buzzer, LEDs, and vibrator activate *unless the GX-3R Pro is operating in Stealth Mode*. If the GX-3R Pro is operating in Stealth Mode, the GX-3R Pro will not respond to a detector search.



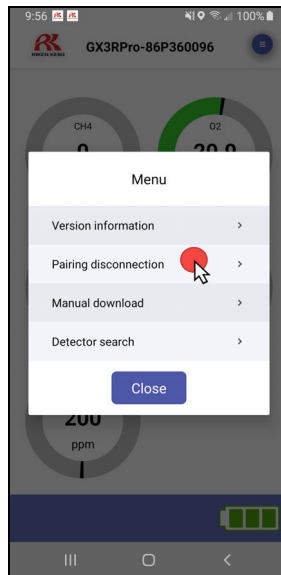


# Disconnecting a Paired GX-3R Pro

1. Press the  button in the upper right corner of the app.




2. If necessary, scroll down to make “Pairing disconnection” visible.
3. Press “Pairing disconnection”. The GX-3R Pro is disconnected from the phone but remains on and functional.

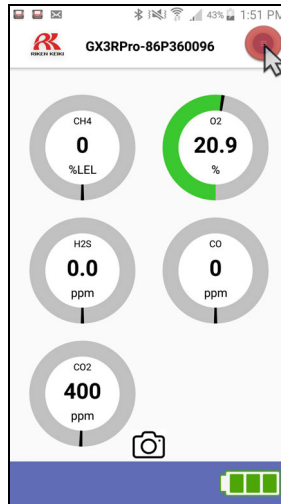


4. If **BLE Auto Shut Off When Idle**, accessible in the Datalogging or SDM-3R Program, is **selected** (factory setting), the GX-3R Pro’s Bluetooth stays on for 5 minutes after disconnection. After 5 minutes, the GX-3R Pro’s Bluetooth gets shut off to conserve battery life. If you want to pair to the GX-3R Pro after 5 minutes of disconnection, you will need to turn the Bluetooth back on in Display Mode.

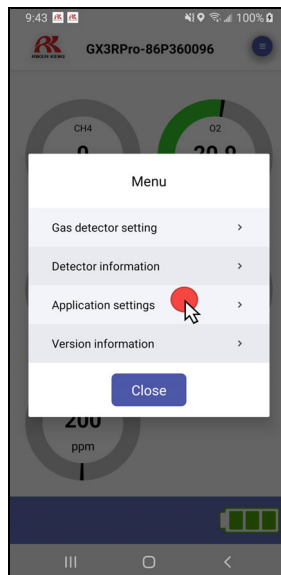
If **BLE Auto Shut Off When Idle**, accessible in the Datalogging or SDM-3R Program, is **deselected**, the GX-3R Pro’s Bluetooth stays on indefinitely after disconnection. You can pair to the GX-3R Pro at any point after disconnection.

# Adjusting App Notification Settings

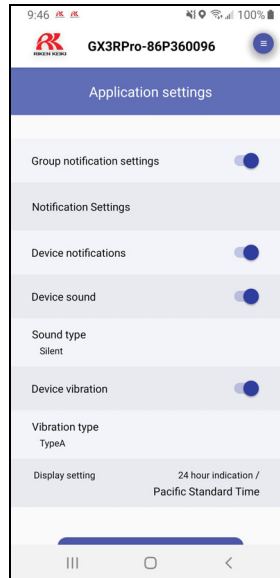
1. Press the  button in the upper right corner of the app.



2. Press “Application settings”.




### 3. The app notification settings appear.

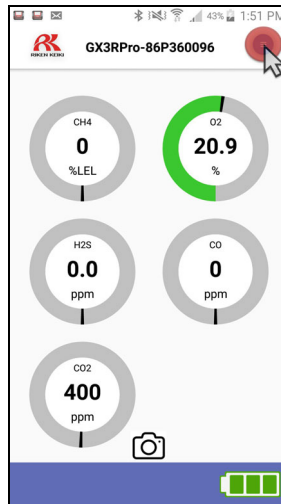


- **Group notification settings**: If set to on, emails and text messages are sent out as long as the Group Settings window is set up appropriately. If set to off, emails and text messages are not sent out even if the Group Settings window is set up appropriately.
- **Device notifications**: If set to on, the app provides notifications for past due bump tests or calibrations, gas alarms, man down alarms, and any faults. Notifications can be viewed in your phone's notification bar. If set to off, the app does not provide notifications.
- **Device sound**: If set to on, the app produces a notification sound. If set to off, the app does not produce a notification sound.
- **Sound type**: Define the app's notification sound.
- **Device vibration**: If set to on, the app vibrates when a notification occurs. If set to off, the app does not vibrate when a notification occurs.
- **Vibration type**: Define the app's vibration pattern.
- **Display setting**: Indicates the time format and time zone. This is not adjustable.

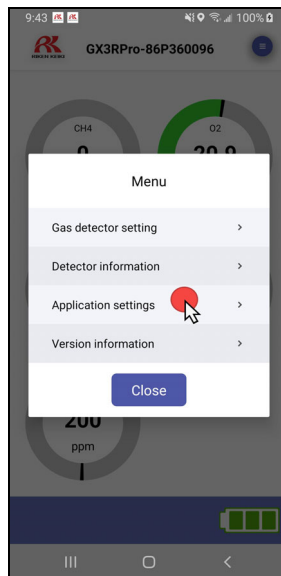
# Defining Owner Information

Owner information can be defined with or without a GX-3R Pro paired with the app. Owner information gets sent out with email alerts along with the station ID and user ID from the GX-3R Pro.

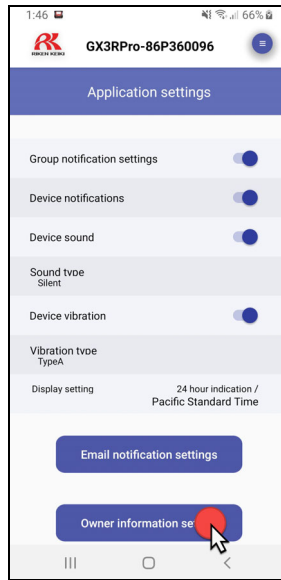
1. Press the  button in the upper right corner of the app.



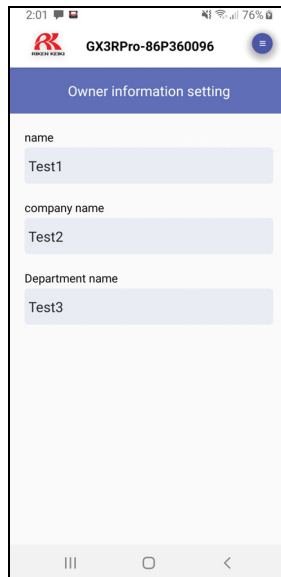
2. Press “Application settings”.



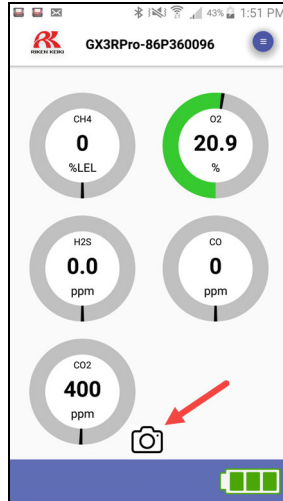

3. Press “Owner information setting” at the bottom of the screen. You may need to scroll down to make it visible.



4. Type in the name, company name, and department name.




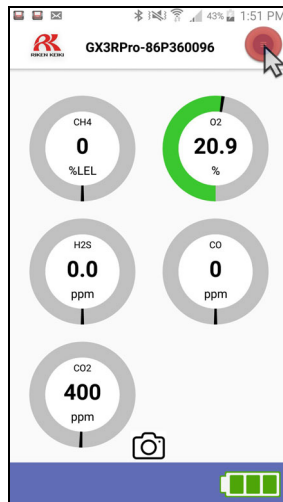
# Saving Snapshots

The RK Link app can save snapshots of readings displayed on the Measuring Mode screen. Pressing the “A screenshot of the RK Link app's Measuring Mode screen. The screen displays five circular gauges for gas readings: CH4 at 0 %LEL, O2 at 20.9 %, H2S at 0.0 ppm, CO at 0 ppm, and CO2 at 400 ppm. A red arrow points to a camera icon located at the bottom center of the screen, just above the battery indicator. The top status bar shows the device name 'GX3RPro-86P360096', signal strength, 49% battery, and the time 1:51 PM.

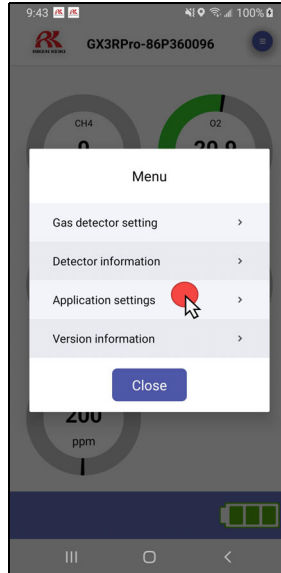
## Setting Up Snapshots

Station and user IDs can be assigned to the device so that snapshots saved will have ID information included. Snapshots *cannot* be created if station and user IDs are not assigned.

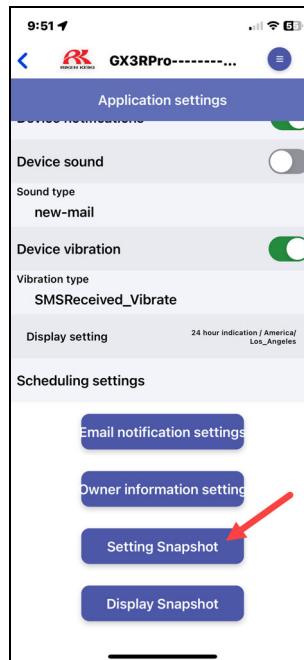
1. Press the  button in the upper right corner of the app.



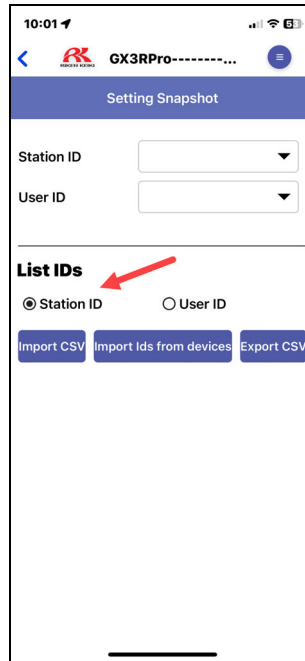
2. Press “Application settings”.



3. Scroll down and press on the “Setting Snapshot” button.



- The “Setting Snapshot” screen appears. To transfer station IDs from the GX-3R Pro, make sure that “Station ID” is selected under “List IDs”.



- Press on “Import Ids from devices”. This will begin transferring IDs from the GX-3R Pro to the RK Link app. This process can take several seconds.

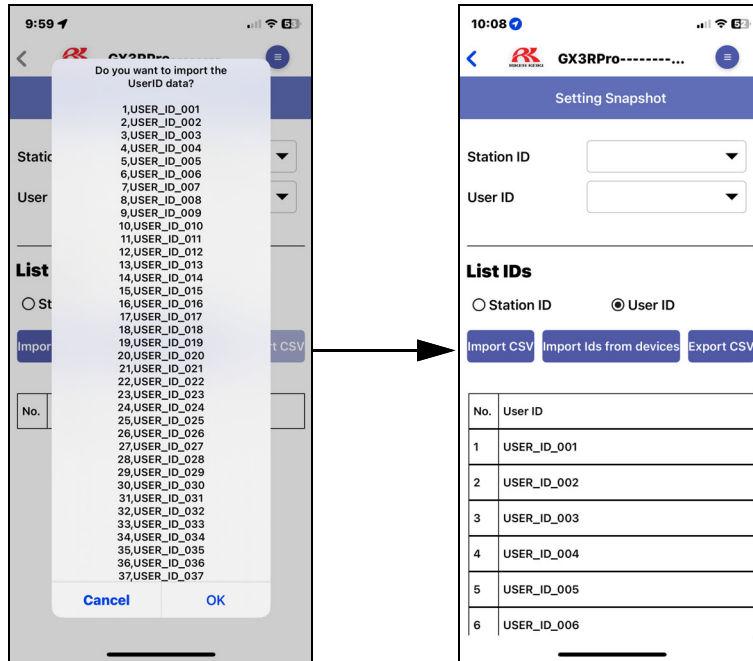
---

**NOTE:** The RK Link app can import IDs from any .CSV files available in phone storage by pressing on the “Import CSV” button. The app can also export a transferred set of IDs as a CSV file to be accessed on other devices/ applications by pressing on the “Export CSV” button.

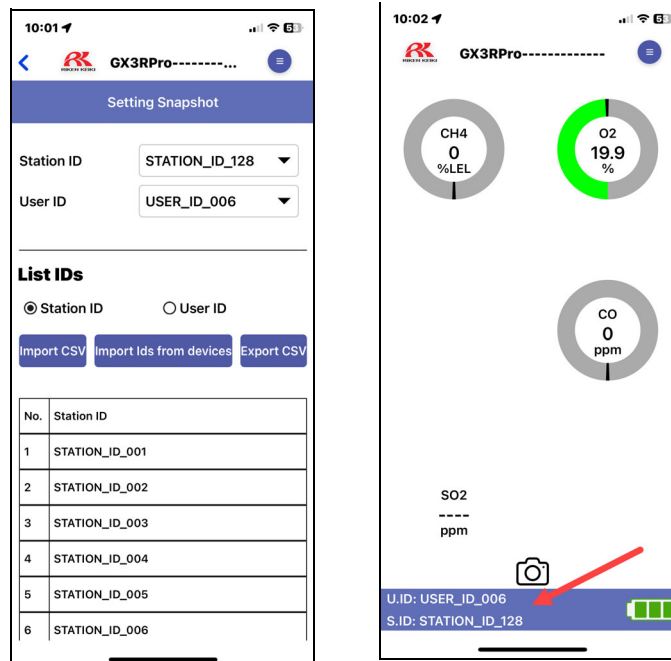
---



- A prompt to save the data will appear. Press “OK”. A numbered table of transferred IDs will appear.

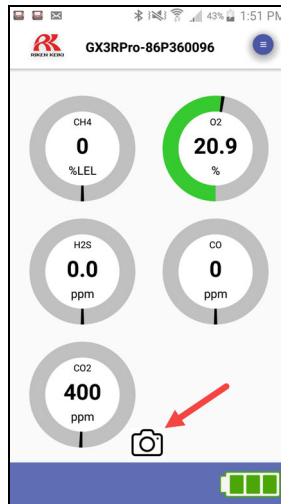



- Under “List IDs”, select “User ID”.
- Repeat Step 5 - Step 6 to the transfer user IDs from the GX-3R Pro to the RK Link app. A numbered table of user IDs will appear.
- Press on the Station ID dropdown menu to scroll to and select the desired Station ID number.
- Press on the User ID dropdown menu to scroll to and select the desired User ID number.
- The IDs in these two dropdown menus will appear on the Measuring Mode screen, be associated with any snapshots generated, and visible in the Display Snapshot menu.




# Creating Snapshots

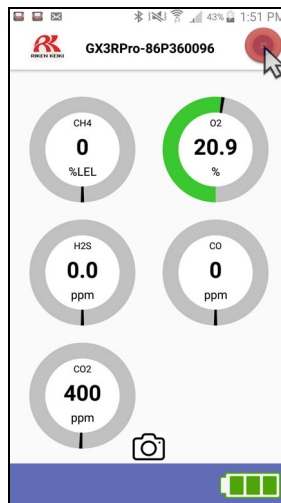
**NOTE:** Snapshots *cannot* be created if station and user IDs are not assigned. See the previous section for setting up snapshots and assigning IDs.

1. To create a snapshot, simply press the “A screenshot of the RK Link app interface. At the top, it shows the RK logo and the station ID 'GX3RPro-86P360096'. Below this are five circular gauges: CH4 at 0 %LEL, O2 at 20.9 %, H2S at 0.0 ppm, CO at 0 ppm, and CO2 at 400 ppm. A red arrow points to a camera icon located at the bottom center of the screen, below the CO2 gauge. The bottom of the screen features a blue bar with a battery level indicator.

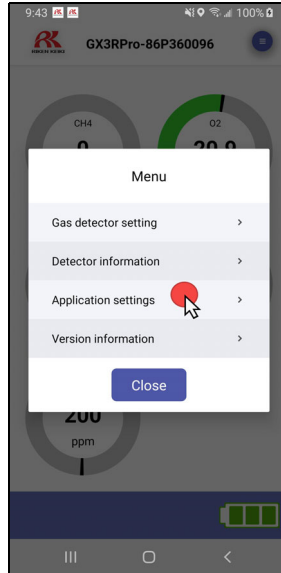
# Viewing Snapshots

The “Display Snapshot” menu allows snapshots to be reviewed once they are generated in the Measuring Mode screen.

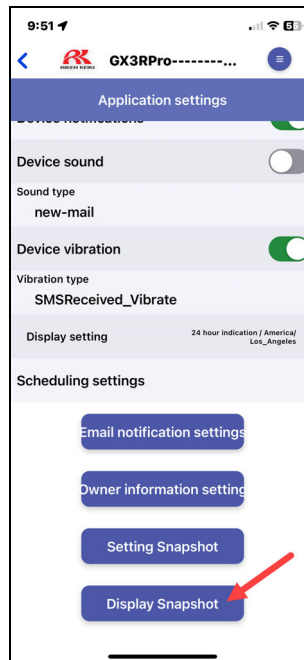
1. Press the  button in the upper right corner of the app.



2. Press “Application settings”.



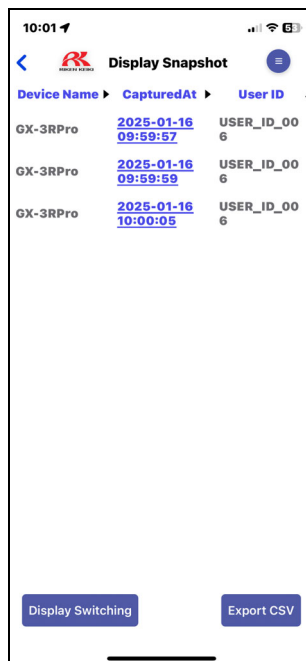
3. Scroll down and press on the “Display Snapshot” button.



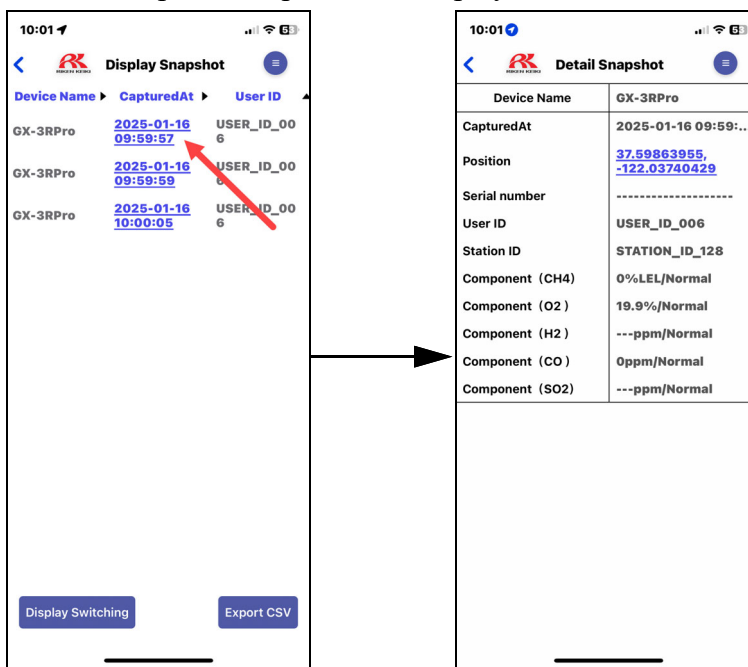
4. The “Display Snapshot” menu appears, displaying all previously saved snapshots available in app storage.

- Pressing the “Display Switching” button will cycle the right most column between the unit’s serial number and the station and user IDs (see “Setting Up Snapshots” on page 14) assigned at the time of the snapshot.

- Pressing on “Export CSV” will convert the data shown into a CSV file so it can be accessed on other devices/applications.



5. Pressing on a time stamp of a snapshot will display the information saved in that snapshot.



6. To delete a snapshot, refer to one of the following steps depending on the phone’s operating system:
  - For iPhone (iOS), swipe to the left on the desired snapshot to access the “Delete” button. Press “Delete”. Repeat this to remove any other snapshots.
  - For Android, swipe to left to scroll to the right of the screen to display red X icons next to each snapshot, then press the red X icon next to the desired snapshot.

# Setting Up Email/Text Alerts

Email and text alert setup can be done with or without a GX-3R Pro paired with the app.

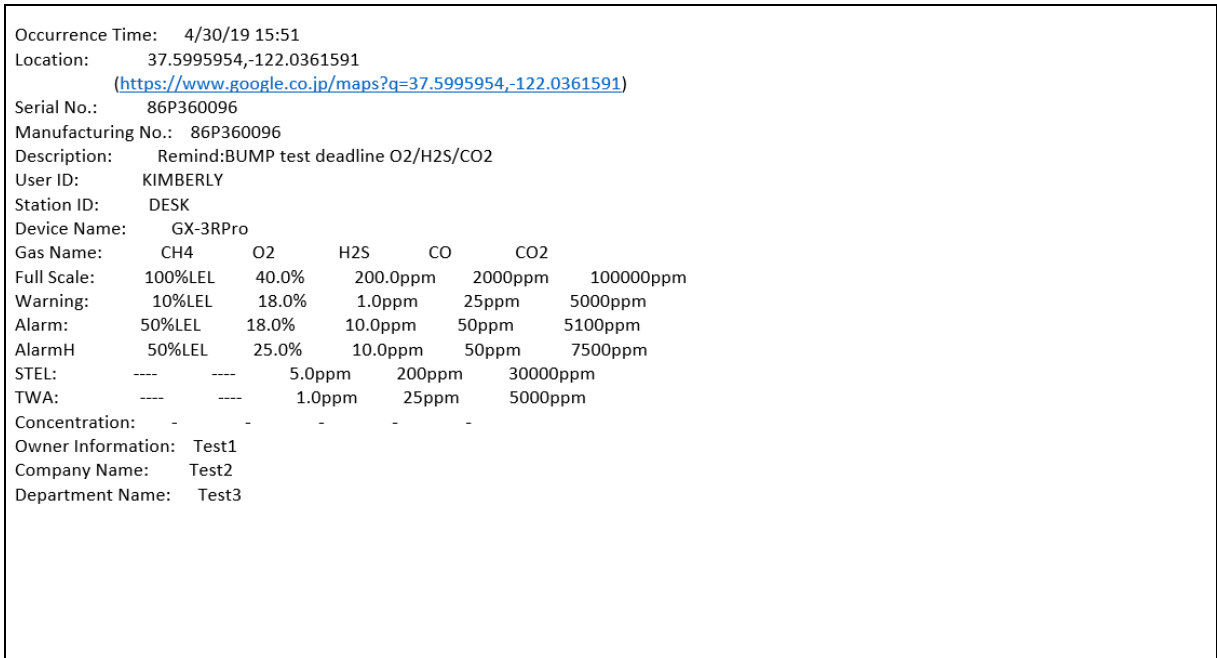


Figure 1: Email Alert for Past Due Bump Test

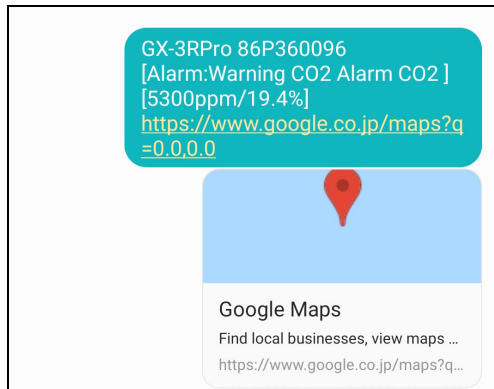

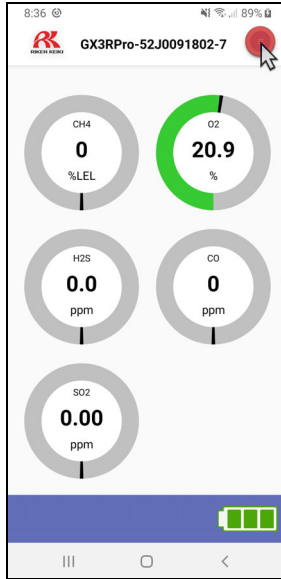
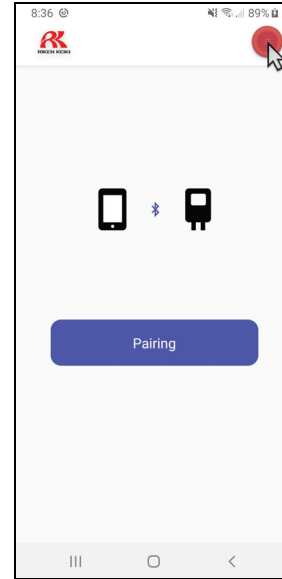


Figure 2: Text Alert for CO<sub>2</sub> Warning and Alarm

1. Press the  button in the upper right corner of the app.

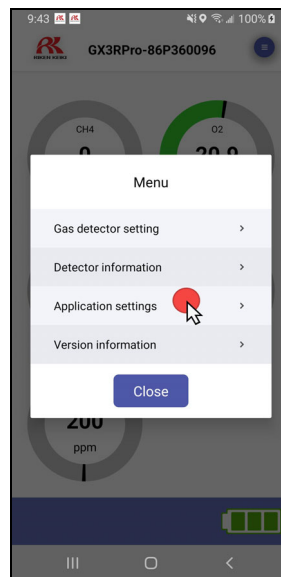


**GX-3R Pro Connected**

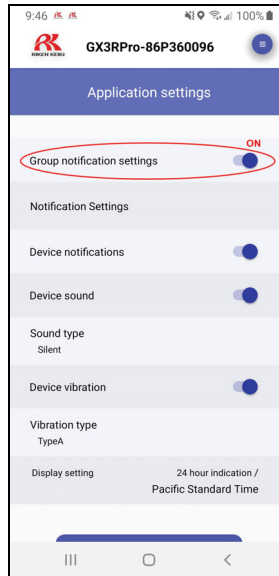


**GX-3R Pro Disconnected**

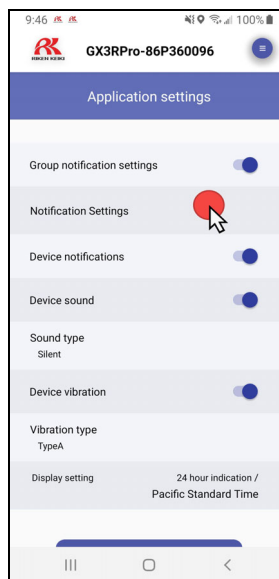
2. Press “Application settings”.



3. Make sure “Group notification settings” is turned on.



4. Press “Notification Settings”.

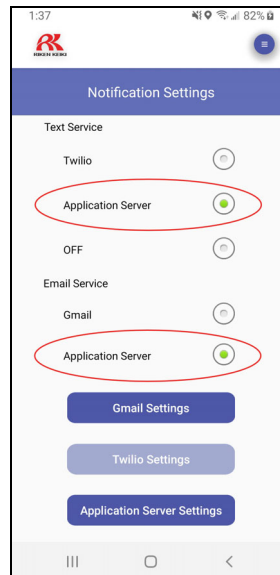


5. Make sure “Application Server” is selected in the “Text Service” and “Email Service” sections.

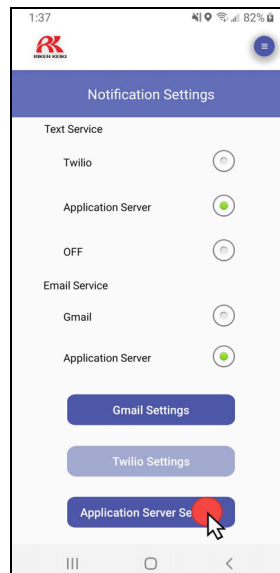
---

**NOTE:** The iOS version of the RK Link app only requires the “Text Service” to be set to “Application Server”. Information saved in the “Application Server Settings” form as described in Step 7 supersedes any selection made in the “Email Service” section of this page.

---



6. Press “Application Server Settings”.





7. Enter your first name, last name, phone number, and email address. All fields are required for the notifications to function.

1:44 87%

**RK**

Application Server Settings

First Name  
Jane

Last Name  
Doe

Phone Number  
1234567890

Email address  
test@example.com

User ID  
User ID

OK

8. Press “OK”. A User ID is automatically generated.

1:44 87%

**RK**

Application Server Settings

First Name  
Jane


Last Name  
Doe

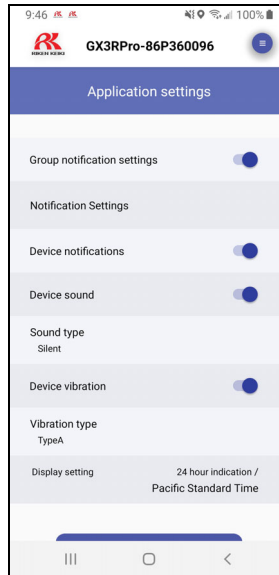
Phone Number  
1234567890

Email address  
test@example.com

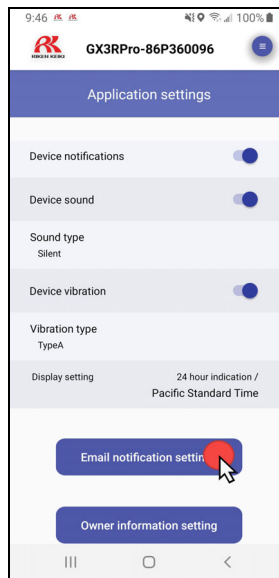
User ID  
0bb49a84-1f95-4354-bd5c-0059€

OK

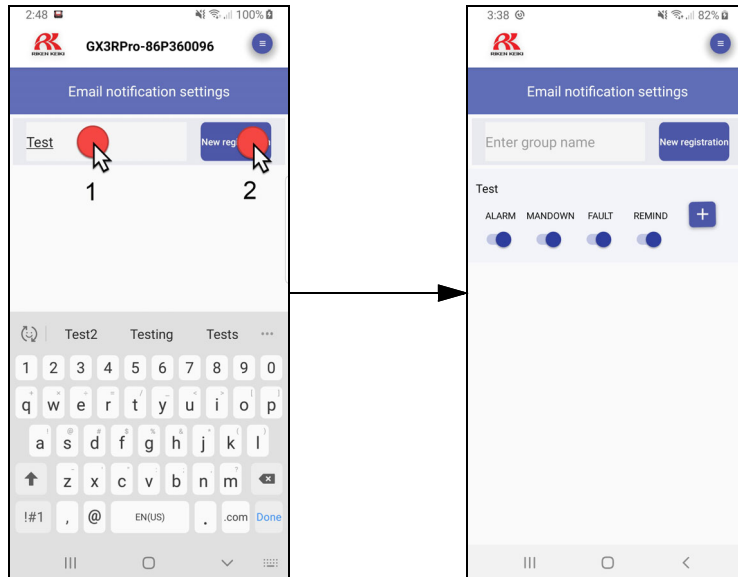
9. Use your phone's "Back" button or the  button to get back to the "Application Settings" screen.




10. Press "Email notification settings" at the bottom of the screen.

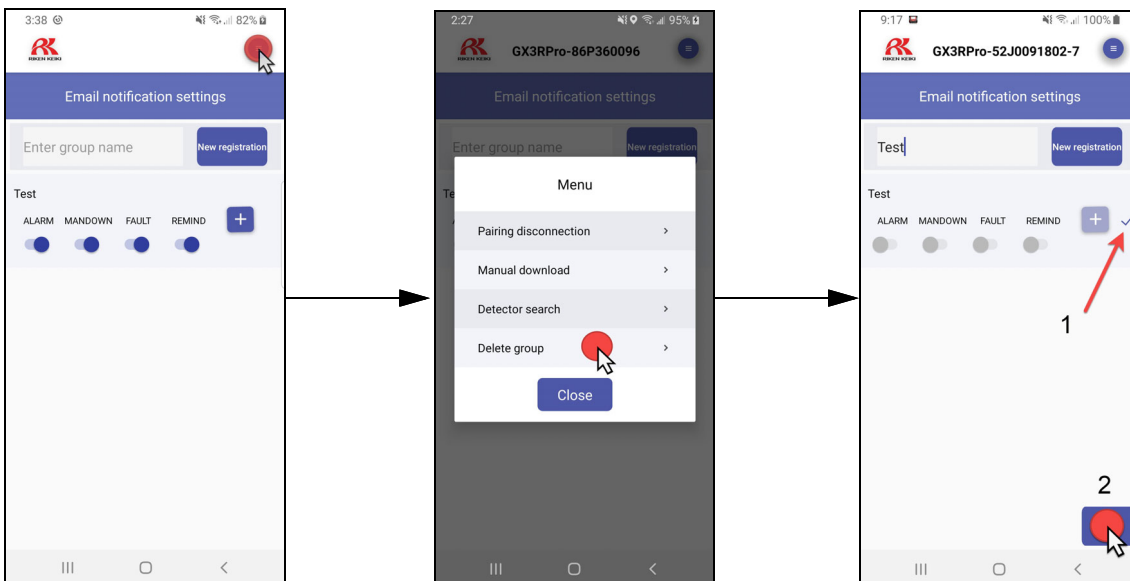


11. Type in a group name and press “New registration”.



12. To delete a group name once it's entered:

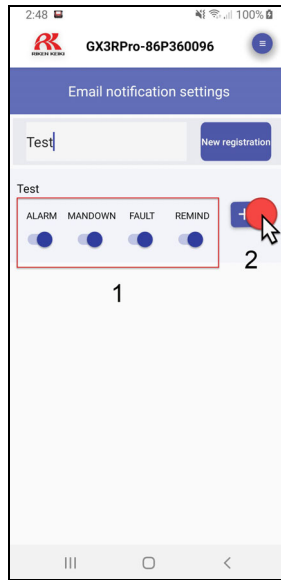
- Press the  button.
- Press “Delete group”. You may need to scroll down to make “Delete group” visible.
- Press each group you want to delete. A check mark appears to the right of the group name.
- Press “OK” at the bottom of the screen to delete the selected group(s).



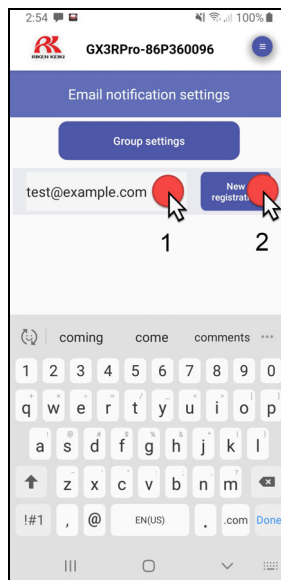
13. Choose the alarm types that will initiate an email or text alert then press the “plus” symbol.

- **ALARM:** Sends an alert or notification for any gas alarm (warning, alarm, alarm H, STEL, TWA).
- **MANDOWN:** Sends an alert or notification for a man down alarm.
- **FAULT:** Sends an alert or notification for any sort of instrument, battery, or sensor failure


- REMIND: Sends an alert or notification if the instrument is due for a bump test or calibration regardless of the instrument’s reminder on/off setting.

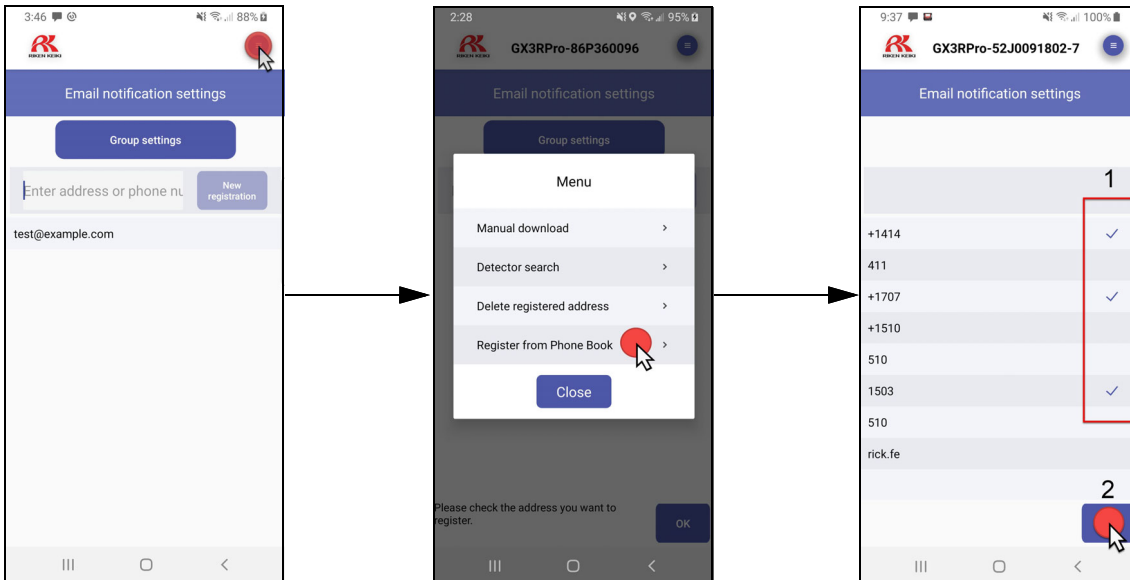


14. Type in an email address or phone number and press “New registration” to add the email address/phone number to the list.

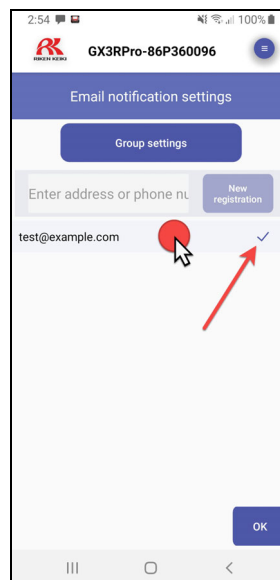


15. To add contacts from your phone:


- a. Press the  button.
- b. Press “Register from Phone Book”. You may need to scroll down to make “Register from Phone Book” visible.
- c. Select each contact you want to use. A check mark appears to the right.



16. Press the new email address/phone number and confirm that a check mark appears to its right. If there is no check mark, that email address/phone number will not be included in the alert!



17. To delete an email address/phone number once it's entered:

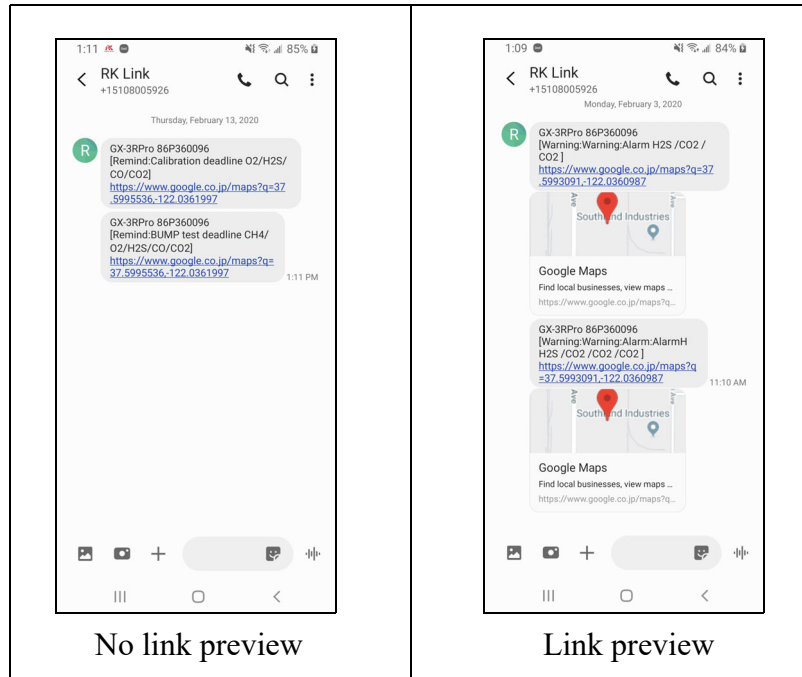
- a. Press the  button.
- b. Press “Delete registered address”. You may need to scroll down to make “Delete registered address” visible.
- c. Press each email address/phone number you want to delete. A check mark appears to its right.
- d. Press “OK” at the bottom of the screen to delete the email address(es)/phone number(s).



18. Press OK. You will be returned to the group settings screen. To add another group, type in a new name and press “New registration”. Repeat Step 6 through Step 9.

19. Use your phone’s “Back” button to return to the Measuring Mode screen.

20. To get a map preview to appear in the text message recipients' message window:
  - a. Recipient must add 510.800.5926 to their contacts.
  - b. For Android phones, turn the link preview feature on in the message settings window.

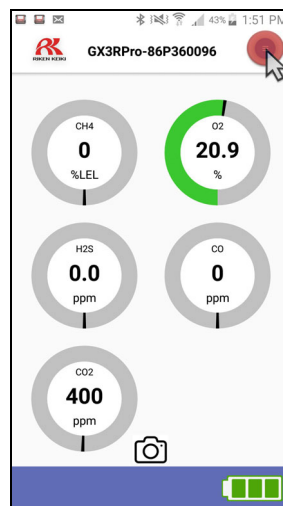


## Changing GX-3R Pro Parameters

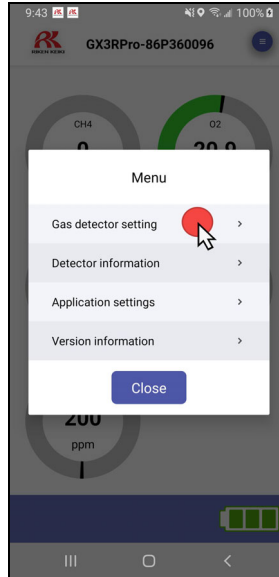
GX-3R Pro parameters can only be viewed or changed when a GX-3R Pro is paired with the app.

### *Entering the Gas Detector Setting Menu*

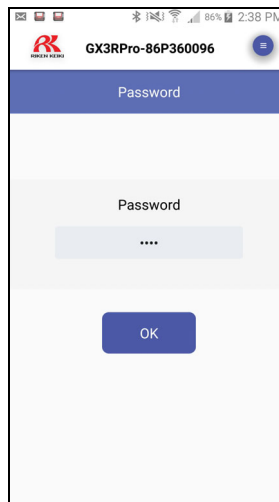
1. From the home screen, press the  button in the upper right corner of the app.



2. Press “Gas detector setting”.



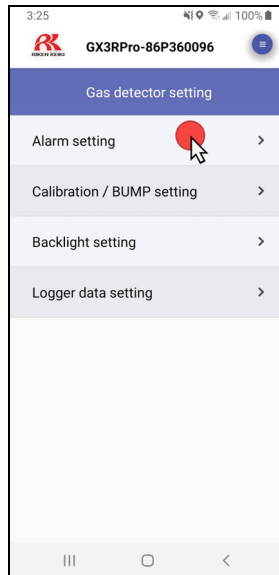
3. Type in the password and press “OK”. The password depends on your instrument settings.
- For brand new instruments whose User Mode Password parameter has not been adjusted, the password is **0000**.
  - If you turned your instrument’s User Mode Password on, the app’s password is your instrument’s User Mode password.
  - If you turned your instrument’s User Mode Password on but then turned it off, the app password is still the instrument’s old User Mode password. The app password does not go back to **0000** after you turn off the instrument’s User Mode password.



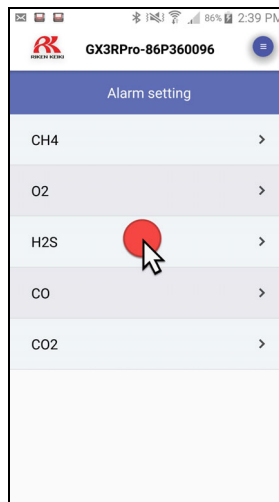


# Alarm Settings

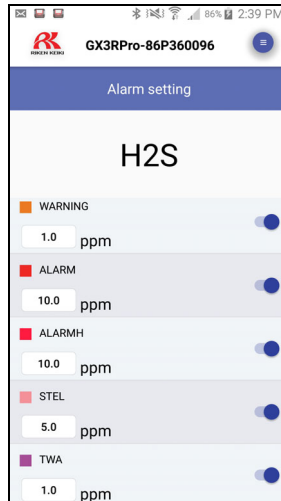
1. Access the Gas Detector Setting Menu as described on page 31.
2. Press “Alarm Setting”.



3. Press the channel whose alarm points you want to view or change. The H<sub>2</sub>S channel is selected in the example below.



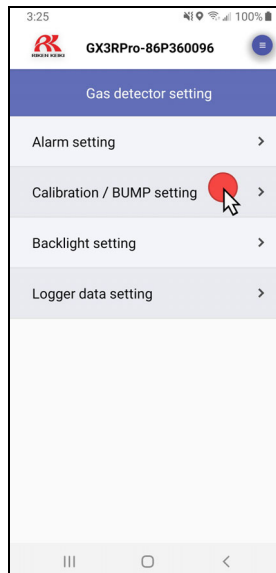
4. The alarm points are displayed.



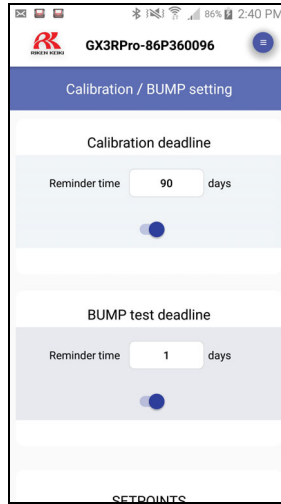
5. Turn the alarms on or off with the toggle button next to each alarm type.
6. Adjust the alarm setpoints by pressing the current setpoint and scrolling to the desired value.

## ***Calibration and Bump Settings***

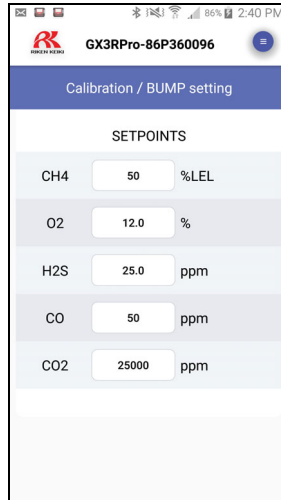
1. Access the Gas Detector Setting Menu as described on page 31.
2. Press “Calibration/BUMP Setting”.



- Turn the calibration and bump test reminder screens on or off with the toggle buttons. Set the calibration and bump test intervals.

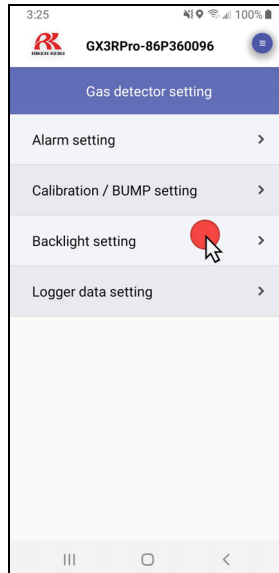


- Scroll down to view or change the auto calibration value for each channel.

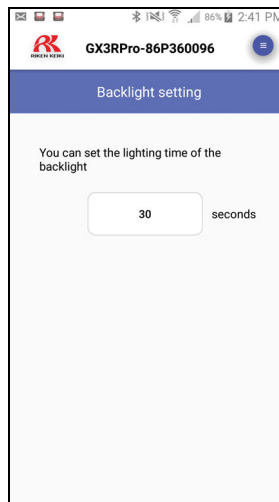


# Backlight Setting

1. Access the Gas Detector Setting Menu as described on page 31.
2. Press “Backlight setting”.



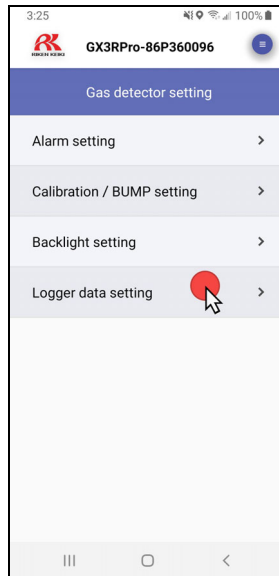
3. Set how long (in seconds) the backlight stays on after each button press. The options are 0-255 seconds. The factory setting is 30 seconds.



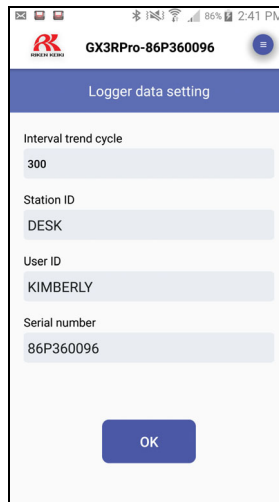
4. Press your phone’s “Back” button.

# Logger Data Settings

1. Access the Gas Detector Setting Menu as described on page 31.
2. Press “Logger Data Setting”.




3. Set the interval trend time, Station ID, and User ID. The serial number is not editable.

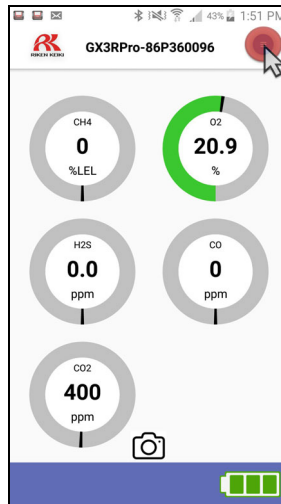


4. Press “Send”. There is no confirmation that the information sent.

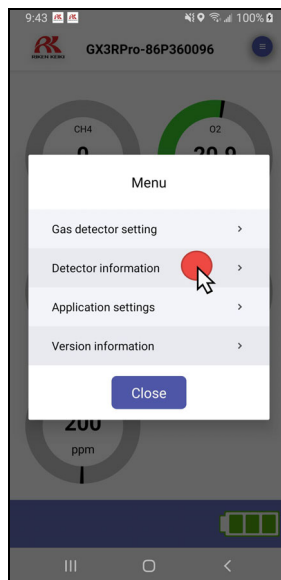
# Viewing Serial Number, IDs, and Bump/Cal Information

Serial number, ID, and bump/cal information can only be viewed when a GX-3R Pro is paired with the app.

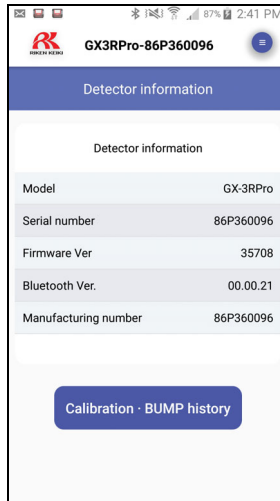
1. Press the  button in the upper right corner of the app.



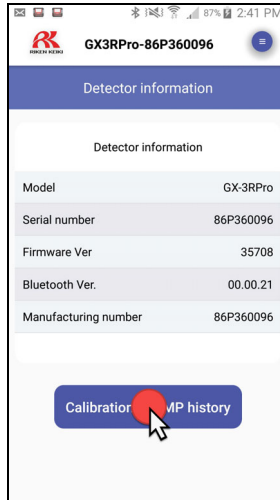
2. Press “Detector information”.



3. Detector information appears.



4. To view information for the last successful calibration and bump test, press the “Calibration BUMP history” button.



- The instrument's serial number, station ID, user ID, and part of the calibration information appear.

Calibration · BUMP history

Detector information

Serial number 86P360096

Station ID DESK

User ID KIMBERLY

Calibration history

	Calibration date / time	Before calibration	After calibration	Calibration concentration	Calibration interval
CH4 100%LEL	2019 03/22 10:14:44	52	50	50	76
	2019 03/22 10:14:44	11.9	12.0	12.0	76

- Scroll down to view the complete calibration information and/or the bump test information.

Calibration · BUMP history


Calibration history

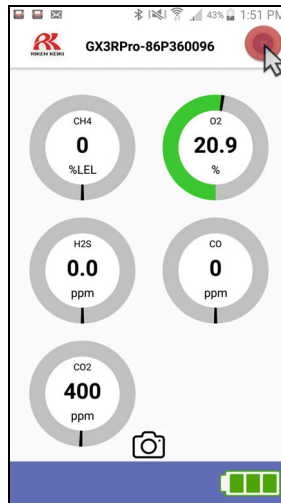
	Calibration date / time	Before calibration	After calibration	Calibration concentration	Calibration interval
CH4 100%LEL	2019 03/22 10:14:44	52	50	50	76
	2019 03/22 10:14:44	11.9	12.0	12.0	76
H2S 200.0ppm	2019 03/22 10:14:44	41.5	25.0	25.0	76
CO 2000ppm	2019 03/22 10:14:44	51	50	50	76
CO2 100000ppm	2018 10/15 11:19:09	26200	25000	25000	None



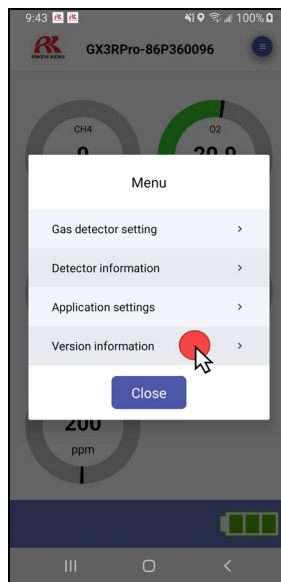
# Viewing App Version Info

App version information can be viewed with or without a GX-3R Pro paired with the app.

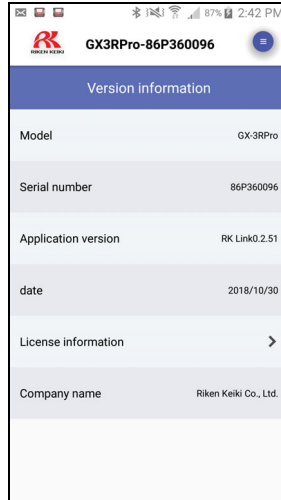
1. Press the  button in the upper right corner of the app.



2. Press “Version information”.



3. Instrument information and app information appear.



4. To view the license information, press “License information”.