

# RX-8000 Alarm Function Supplement

**Part Number: 71-0445**

**Revision: P1**

**Released: 10/10/17**

---

## Overview

The RX-8000's alarm function is factory set to be off. This means that as shipped from the factory, the RX-8000 will not visually or audibly alert you to an increasing (decreasing for oxygen) gas condition.

This supplement tells you how to turn the alarm function on.

---

## Materials

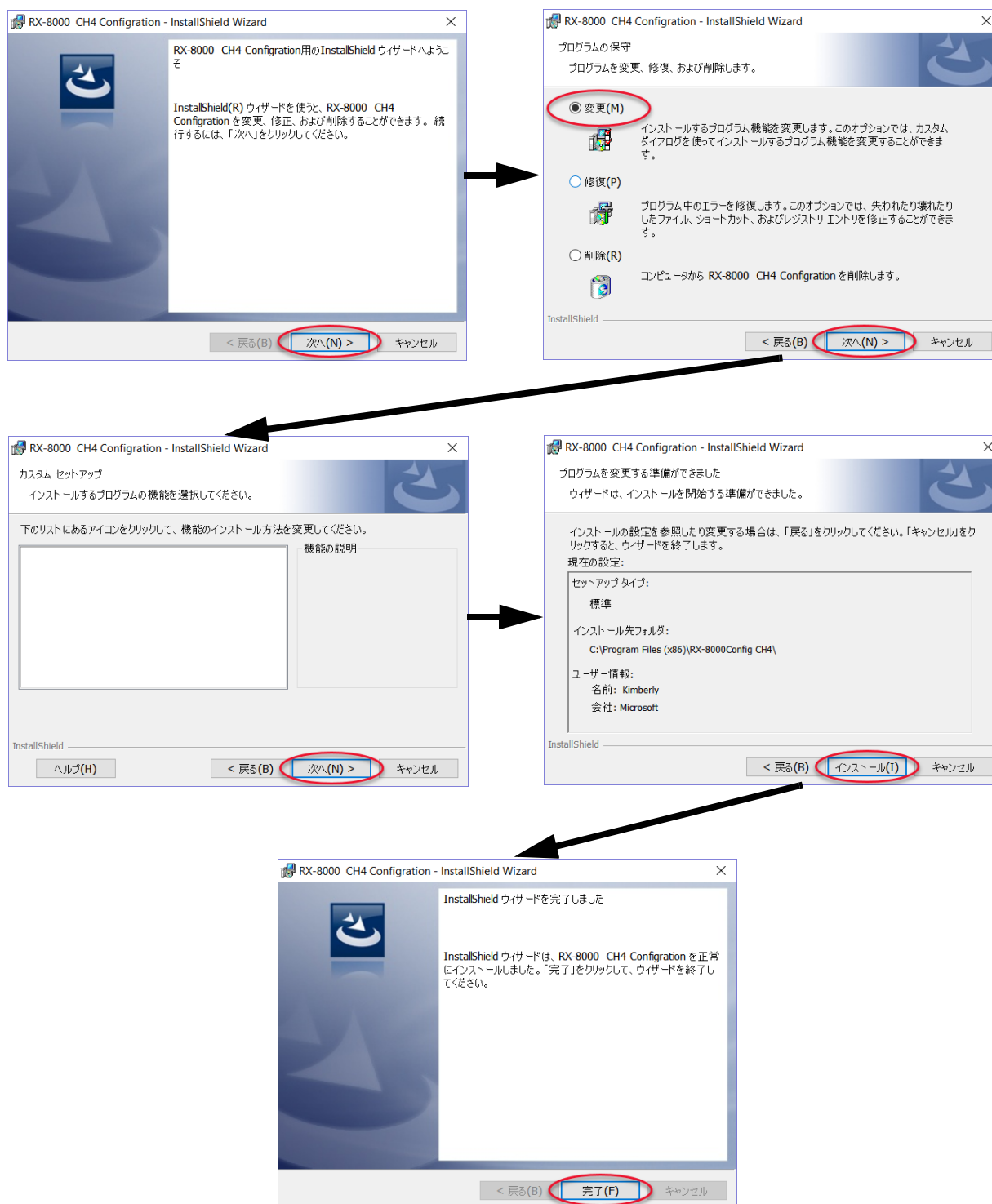
- Computer with infrared port or IrDA/USB adapter cable (see Parts List for part number)
- Computer with Internet connection
- RX-8000

---

## Instructions

1. Download the IrDA/USB adapter cable drivers per the cable's instruction manual.
2. Plug the IrDA/USB adapter cable's USB connector into an available USB port on your computer.
3. Go to [gasdetecting.com/ftp](http://gasdetecting.com/ftp).
4. Enter the user name and password (case sensitive).
  - User name: guest
  - Password: instruments
5. Select **Technical**.
6. Select **RX-8000 Fact Configs**.
7. There are 2 versions of the Factory Config program: one for the CH<sub>4</sub> (methane) version of the RX-8000 and one for the HC (general hydrocarbon) version of the RX-8000. Download the program appropriate for your RX-8000.
8. You will be given the option to Open or Save the downloaded folder. If you save the folder, remember where you saved it.
9. Open the downloaded folder and double click the setup.exe file to install the Factory Config program.
10. If you get a message from your computer and/or from your antivirus program about an unknown application, let the application run anyway.

11. The installation wizard is in Japanese. Follow the screens below to install the program.



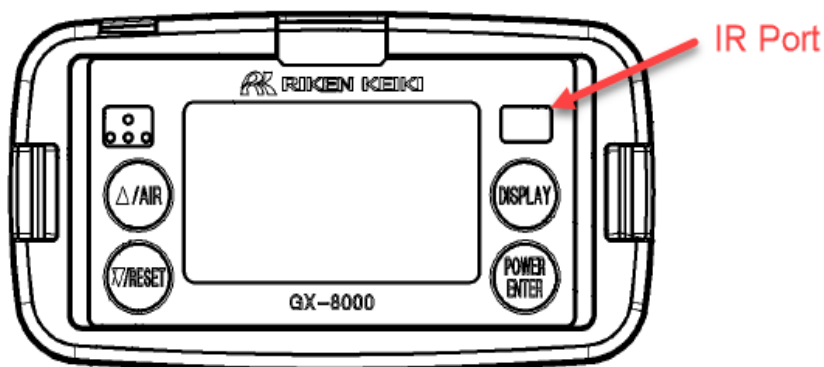
12. Run the RX-8000 Factory Config program.

13. You will be prompted for a password. Type in 1994.

14. The main screen will display.

Gas	Enable	Warning and Alarm point	
		Warning	Alarm
---	<input type="checkbox"/>	---	---
---	<input type="checkbox"/>	---	---
---	<input type="checkbox"/>	---	---

15. Line up the IR port on the RX-8000 with the IR port on the IrDA/USB adapter cable.



16. Press the POWER/ENTER button on the RX-8000.

17. Once a connection between the Factory Config program and the RX-8000 is established, the program screen will appear as shown below.

The screenshot shows the 'RX-8000 - CH4 Setup Program [P.No.04765]' window. The 'Status' section indicates 'Serial Port' and 'Connect' are active. The 'Download State' shows 'RX-8000 ...Connection Successful.' The 'Read Commands' section has 'Instrument Information' and 'Information Get & Save' buttons. The 'Write Commands' section has 'Update', 'Update ID', 'Date/Time Set', and 'Calibration' buttons. The 'Setting Commands' section has 'Power Off', 'Load local file', 'Store local file', 'Detail Settings', and 'Exit' buttons. The 'RX-8000 Status' section includes fields for Program Number, SUM, PC Date/Time (10/10/2017 2:58:04 PM), RX-8000 Date/Time, Serial No. (20 Characters), Station ID (16 Characters), User ID (16 Characters), and Interval Trend Time (Sec) (300). Below this is a table for 'Warning and Alarm point'.

Gas	Enable	Warning	Alarm
---	<input type="checkbox"/>	-----	-----
---	<input type="checkbox"/>	-----	-----
---	<input type="checkbox"/>	-----	-----

18. Click the **Instrument Information** button. The program will download instrument information.

This screenshot is identical to the previous one, but the 'Instrument Information' button in the 'Read Commands' section is circled in red, indicating it should be clicked.

19. Click the **Detail Settings** button on the right side of the screen.

**RX-8000 - CH4 Setup Program [P.No.04765]**

Status: Serial Port Connect

**Download State**

RX-8000 Instrument Information Download.  
 RX-8000 Analog to Digital Converter Values List

ch0 -  
 ch1 PRES. : 1.509V  
 ch2 O2 AMP : 1.025V  
 ch3 TEMP LEL : 1.686V  
 ch4 Ri LEL : 29.075V  
 ch5 TEMP VOL : 1.793V  
 ch6 BATT. : 1.096V  
 ch7 Ri VOL : 29.075V  
 RX-8000 Instrument Information Download Complete.

**Read Commands**

Instrument Information  
 Information Get & Save

Filename Suffix at Save

**Write Commands**

Update  
 Update ID  
 Date/Time Set  
 Calibration

**Setting Commands**

Power Off  
 Load local file  
 Store local file  
**Detail Settings**  
 Exit

**RX-8000 Status**

Program Number: 04982  
 SUM: FC4E  
 PC Date/Time: 10/10/2017 3:02:05 PM  
 RX-8000 Date/Time: 10/11/2017 7:03:07 AM

Serial No. (20 Characters): 771010144RN  
 Station ID (16 Characters): ST-ID000  
 User ID (16 Characters):  
 Interval Trend Time (Sec): 300

Gas	Enable	Warning	Warning and Alarm point	Alarm
CH4(100.0%LEL)	<input checked="" type="checkbox"/>	10.0		50.0
O2(40.0VOL%)	<input checked="" type="checkbox"/>	19.5		23.5
CH4(100.0VOL%)	<input checked="" type="checkbox"/>			

20. Click the **Parameter** tab.

**RX-8000 Factory Setting**

Station ID | **Parameter** | HC Gas Table | Thermal Compensation

Station List

- 1 ST-ID000
- 2 ST-ID001
- 3 ST-ID002
- 4 ST-ID003
- 5 ST-ID004
- 6 ST-ID005
- 7 ST-ID006
- 8 ST-ID007
- 9 ST-ID008
- 10 ST-ID009
- 11 ST-ID010
- 12 ST-ID011
- 13 ST-ID012
- 14 ST-ID013
- 15 ST-ID014
- 16 ST-ID015
- 17 ST-ID016
- 18 ST-ID017
- 19 ST-ID018
- 20 ST-ID019
- 21 ST-ID020

Export csv file  
 Import csv file

(Left space 0) OK Cancel

21. Set the **Alarm Function** parameter to **On** using the drop-down menu.

RX-8000 Factory Setting

Station ID	Parameter	HC Gas Table	Thermal Compensation
	Manufacture number	751013144RN	
	Spec No	SPE-xxxx	
	Alarm pattern	Latch	
	Logger Over Write	On	
	Calibration Time Limit(1-365days)		90
	Cal Limit Display	Off	
	Cal Limit Check	Confirm to use	
	Destination	Domestic	
	OXY Alarm type	H-L	
	Auto Backlight	Off	
	LCD Backlight Time(1-255sec)		30
	Alarm Function	On	
	Auto Zero Adjustment	Off	
	Zero Adjustment on demand	On	
	Confirmation Beep	Off	

(Left space 0)

OK Cancel

22. Click **OK**.

RX-8000 Factory Setting

Station ID	Parameter	HC Gas Table	Thermal Compensation
	Manufacture number	751013144RN	
	Spec No	SPE-xxxx	
	Alarm pattern	Latch	
	Logger Over Write	On	
	Calibration Time Limit(1-365days)		90
	Cal Limit Display	Off	
	Cal Limit Check	Confirm to use	
	Destination	Domestic	
	OXY Alarm type	H-L	
	Auto Backlight	Off	
	LCD Backlight Time(1-255sec)		30
	Alarm Function	On	
	Auto Zero Adjustment	Off	
	Zero Adjustment on demand	On	
	Confirmation Beep	Off	

(Left space 0)

OK Cancel

23. Click **Update**.

24. Click **Yes** in the window that pops up.

25. Once the update is complete, click **Power Off**.

## Parts List

Part Number	Description
47-5084RK	IrDA/USB adapter module (without USB cable)
47-5084RK-01	IrDA/USB adapter assembly (with module and USB cable)
47-5085RK	Cable, USB A to USB mini, 6 feet, for IrDA/USB adapter module