

PROBES

- single or multi-branch
- arbitrary geometries and fiber distributions
- custom end pieces
- application-specific design

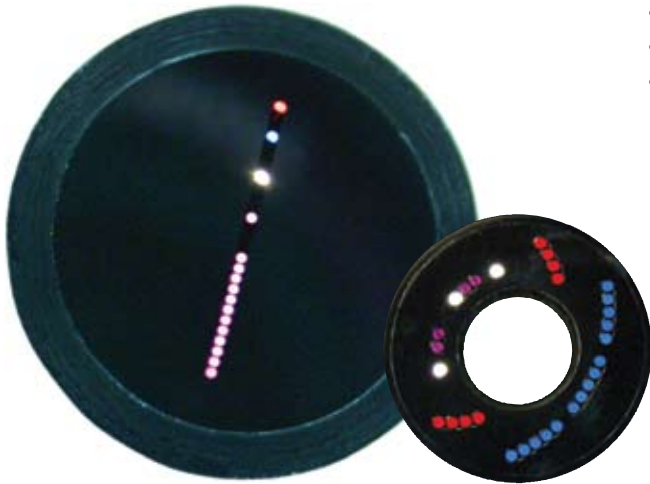


Multi-branch probe incorporating both 100 and 200 μ m core fibers in a custom handpiece

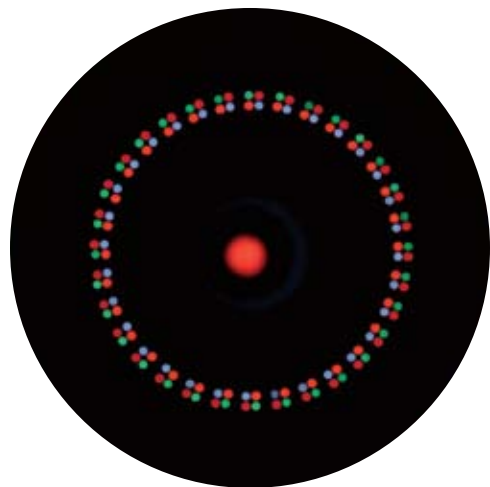


MAPPED OR STRUCTURED

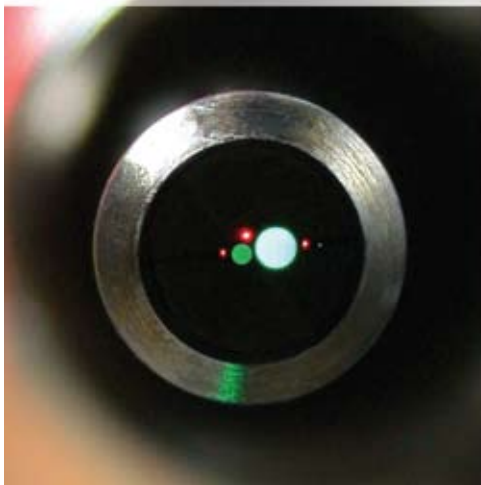
- single or multi-branch
- arbitrary geometries and fiber distributions
- precise fiber spacing
- large fiber counts
- additional optical elements



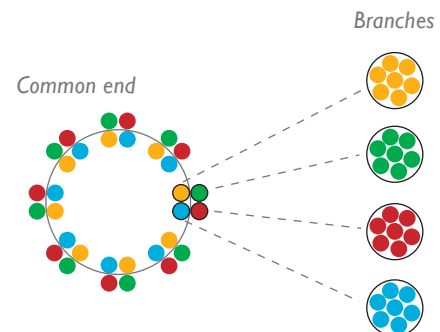
Specialized reflectance probe



Custom illumination bundle featuring mapping into four branches



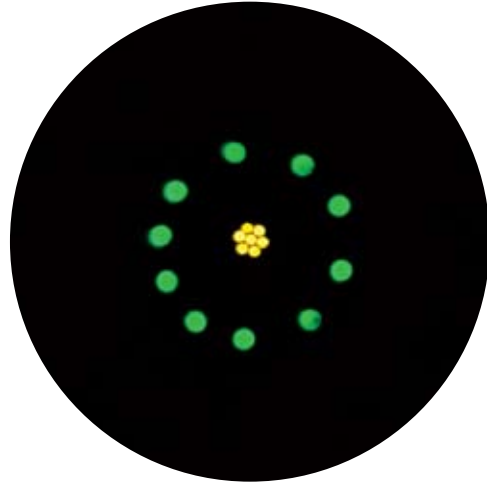
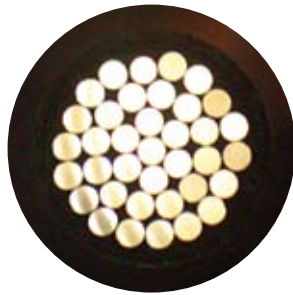
Array of various fiber sizes



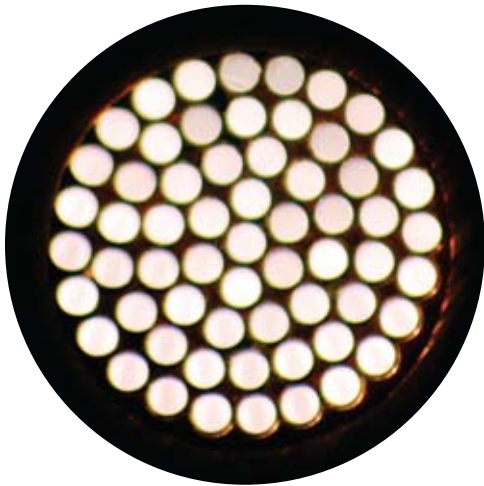
TIGHTLY PACKED BUNDLES

- single or multi-branch
- arbitrary geometries and fiber distributions
- large fiber counts
- stripped of buffer to increase efficiency

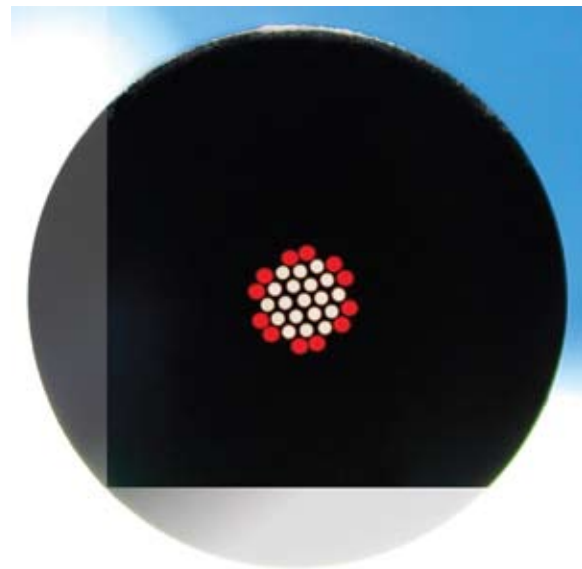
*Bundle of 37 fibers,
100 μ m each,
stripped buffer*



*Concentric bundle
Center: 7 fibers, 50 μ m core
Outer ring: 10 spaced fibers, 100 μ m core*



*Bundle of 61 fibers,
200 μ m each,
tight hexagonal
pattern*

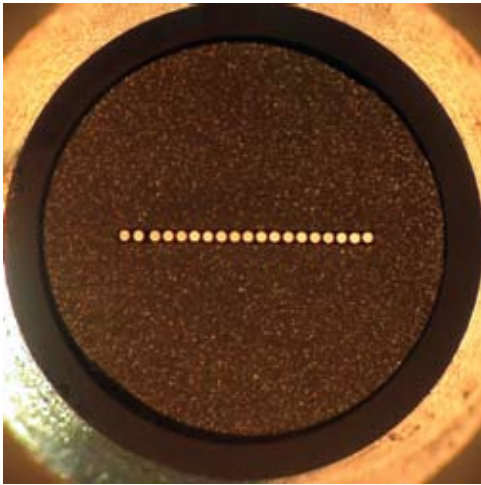


*Bundle of 31 fibers,
100 μ m each, mapped*

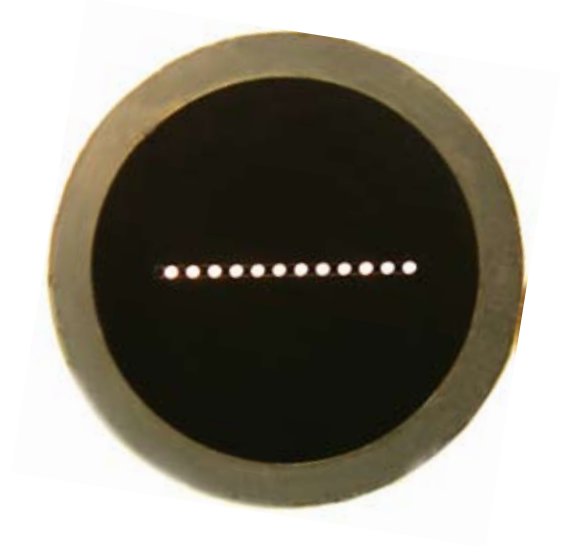


LINEAR ARRAYS

- small fiber core sizes ($<50\mu\text{m}$)
- buffer stripped to increase efficiency
- tightly packed or spaced



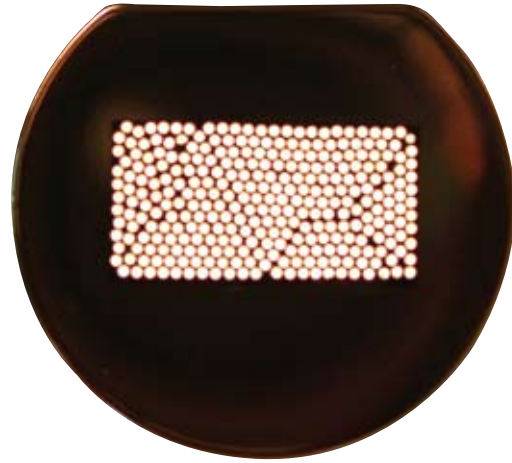
*Array of $50\mu\text{m}$ fibers
inside SMA connector*



*Array of spaced fibers
in plastic ferrule*

KEYED FERRULES

- array aligned to the key surface
- tightly packed fibers, 200 μ m core



RECTANGULAR TIP



FEATURES

- small form factor
- tightly packed rectangular array

