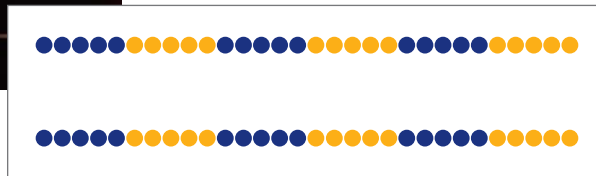
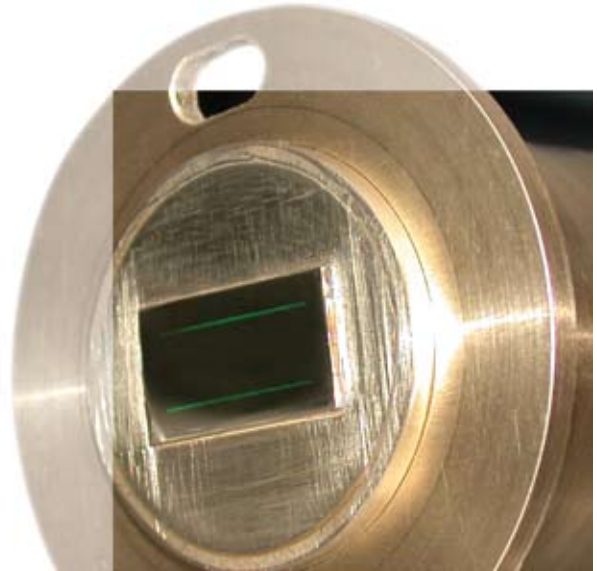
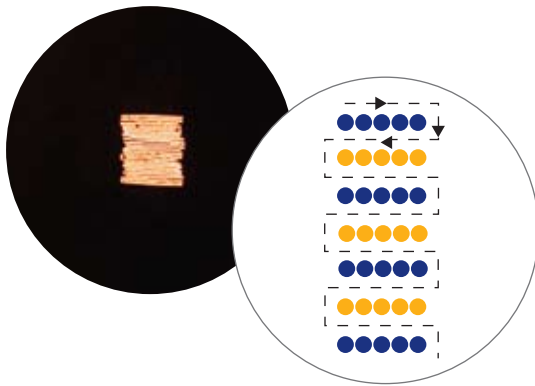


FEATURES

- assembly for medical imaging
- 460 fibers, 40 μ m core
- successive layers within 2D array mapped into segments within 2 parallel linear arrays



View of the ferrule with 2 parallel linear arrays

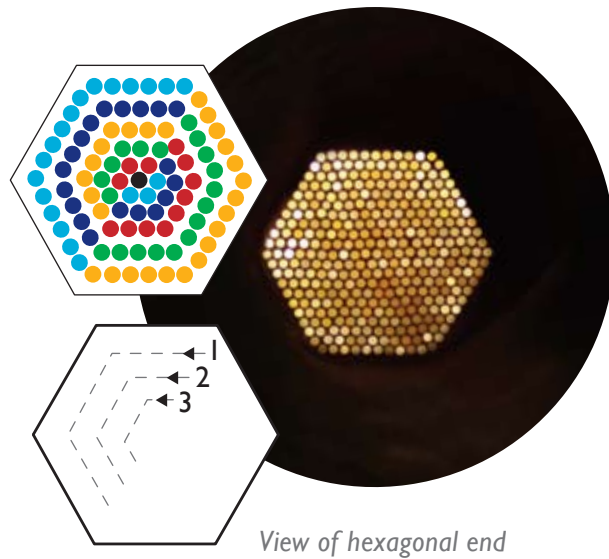


View of the ferrule with 2D array; actual array dimensions 1.2 x 1.4 mm



FEATURES

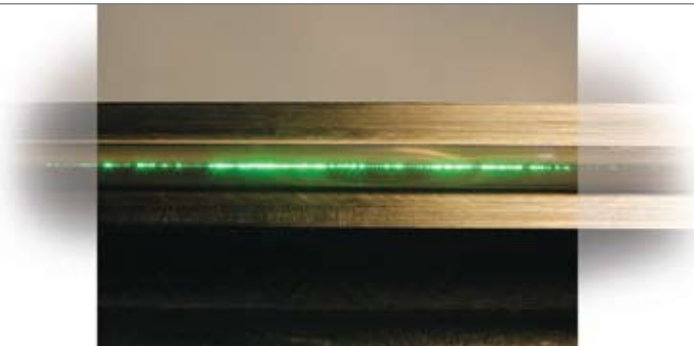
- bundle of 300 fibers, 100 μ m core, for sensing application
- fibers from successive layers within hexagonal end arranged along the linear array
- fibers in linear array spaced 400 μ m apart
- 3 broken fibers (maximum allowed: 6)



View of hexagonal end



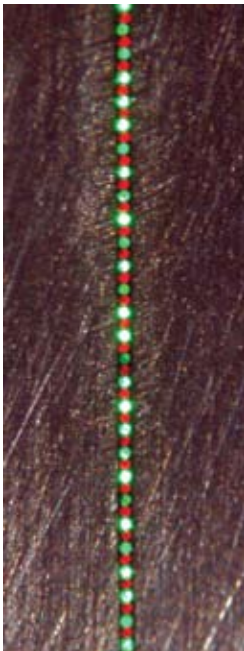
View of the linear end



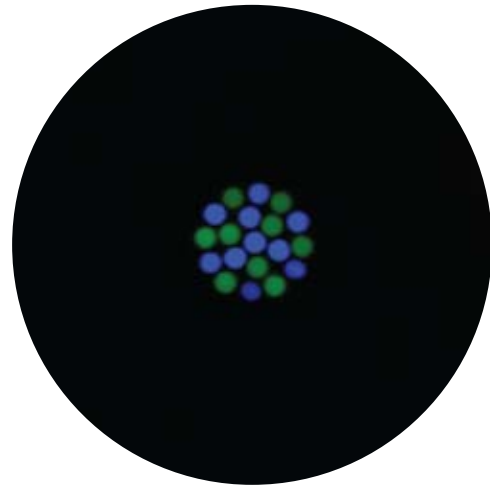
FEATURES

- single or multi-branch
- arbitrary geometries and fiber distributions
- large fiber counts
- buffer stripped to increase efficiency

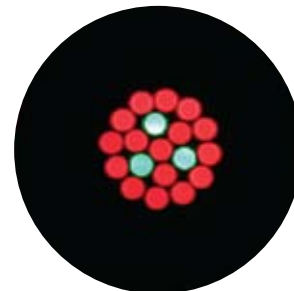
Linear array of 109 fibers, 50 μ m core, divided into 2 channels



*3 channel Raman converter;
50 μ m core fibers;
stripped buffer*



*Bundle of 19 fibers, 50 μ m core,
mapped into 2 branches*

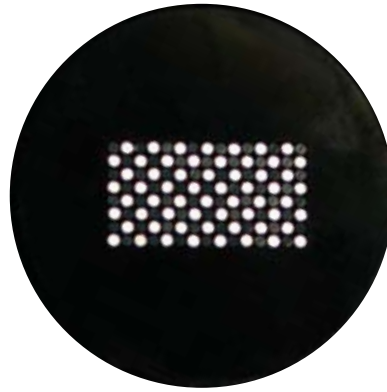


*Bundle of 19 fibers, 100 μ m core,
mapped into 2 branches*



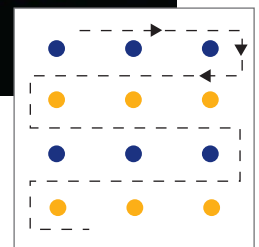
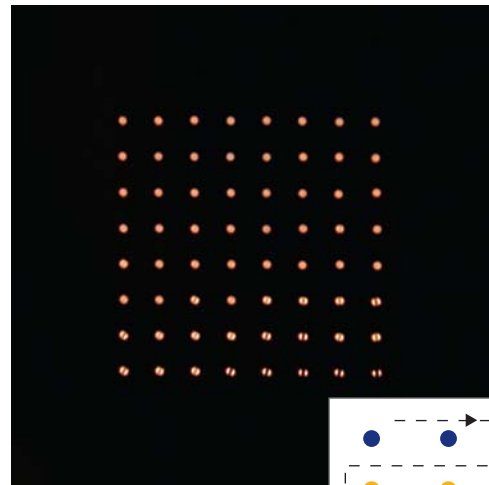
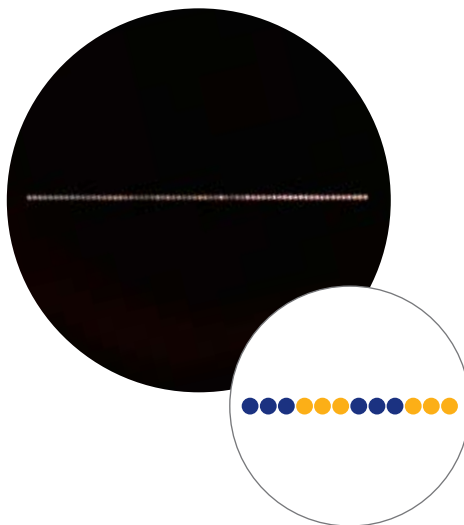
CHECKERBOARD ASSEMBLY

- array of 8 x 15 fibers
- fibers structured in rectangular pattern
- no broken fibers allowed



SERPENTINE 2D ARRAY

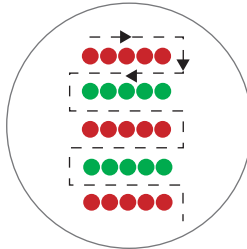
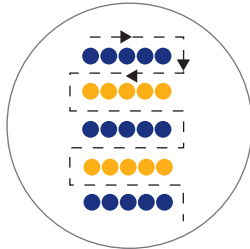
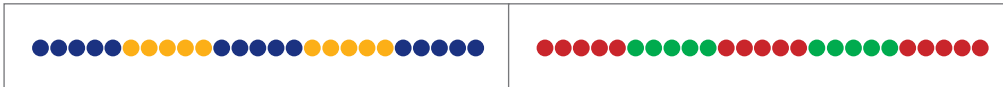
- array of 8 x 8 fibers
- fibers mapped into linear array in serpentine fashion



FEATURES

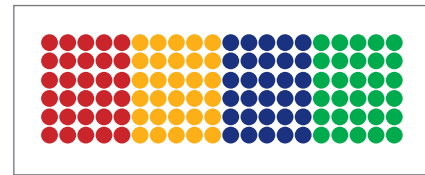
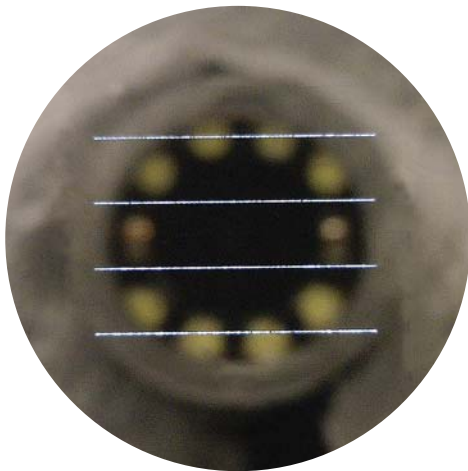
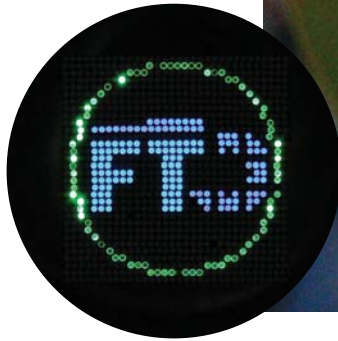
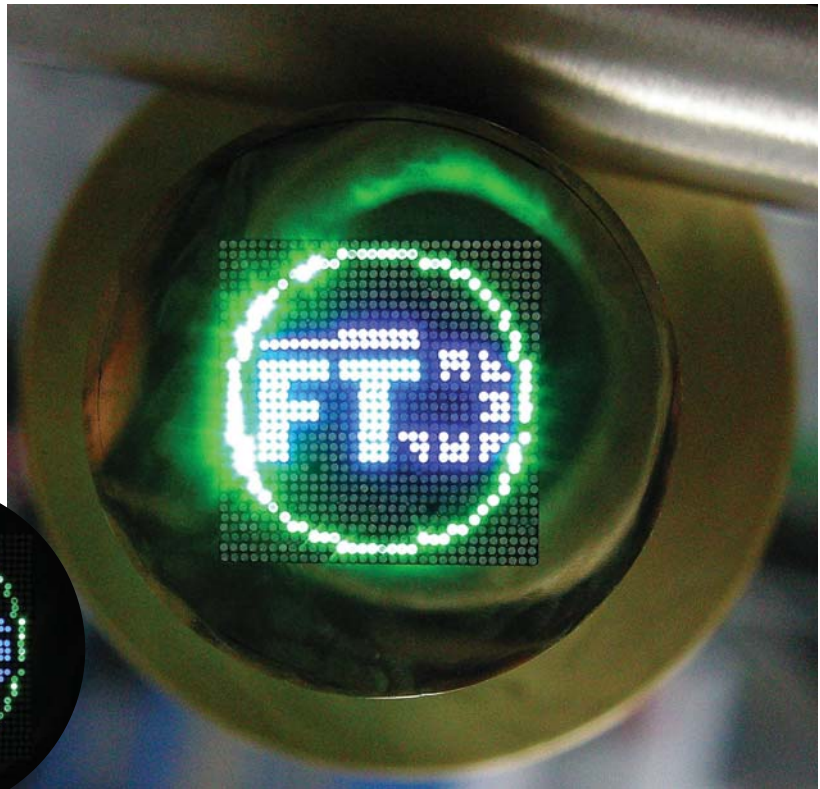
- bifurcated assembly for astronomical imaging
- 338 fibers, 17 μ m core
- successive layers within 1.2 mm square 2D array mapped into segments within linear arrays

View of the ferrule with 2 linear arrays



FEATURES

- 32 x 32 square array of 200µm fibers
- fibers mapped into 4 branches representing company logo



FEATURES

- assembly for medical imaging
- 648 fibers, 50µm core
- successive layers within 2D array mapped into segments within 4 parallel linear arrays

