

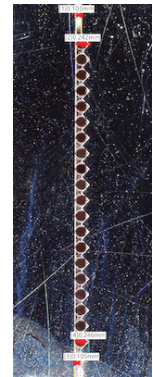
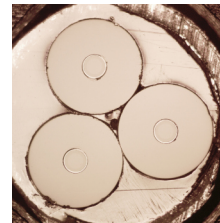
MULTI-OBJECT SPECTROSCOPY



MOS instruments require complex fiber systems with hundreds or thousands of individual fibers to enable simultaneous spectral data collection from multiple sky objects. Typically, each fiber is mounted in a positioner at the telescope end, and terminated in a slit at the spectrograph end. Some instruments have complete end-to-end runs, others use separate assemblies for various sections, joined by interconnects. FTO can support both the end-to-end and segmented (connectorized or fused) fiber runs. MOS systems can be a retrofit or upgrade to an existing telescope.

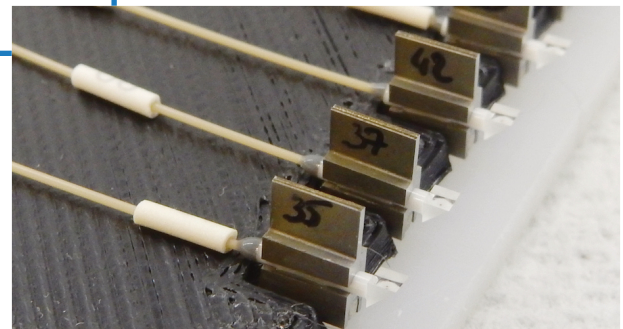
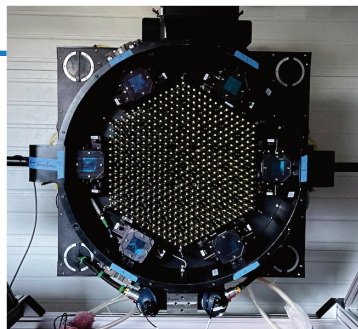
CHALLENGES

- Long fiber runs require low stress processing to preserve throughput
- Complex routing, mapping
- Exacting terminations with tight mechanical tolerances
- Need to be mechanically robust to handle long term telescope operation
- Frequently require optics at input and/or output



FTO CAPABILITIES

- Leverage years of industrial cable manufacturing expertise
- Broad expertise in optical assembly, alignment and testing
- Well equipped optical testing lab
- Established and proven manufacturing processes
- Ability to develop and implement manufacturability improvements
- Quick ramp-up to volume production
- Component traceability and quality assurance records



FiberTech Optica
Integrated fiber optic solutions

www.fibertech-optica.com • info@fibertech-optica.com

519.745.2763 • 514.352.6666

© June 2022 FiberTech Optica Inc. All rights reserved. No reproduction is permitted without prior authorization.