

1999  
Joachim Patinir

(Netherlandish, active by 1515, died 1524)

*The Penitence of Saint Jerome* (triptych)

Oil on wood;  
closed, 47½ x 28 in.;  
open, 47½ x 60 in.  
Fletcher Fund, 1936  
(36.14a-c)

When the shutters of this altarpiece are opened, we behold a panoramic view of a seemingly endless landscape, extending back to seaports and distant mountains. (See fold-out illustration 2 in the Introduction.) The altarpiece, still in its original frame, was owned by the Hapsburgs, who donated it to the Benedictine monastery of Kremsmunster near Linz in Austria. The Metropolitan acquired it from the monastery in 1936.

JANUARY

S	M	T	W	T	F	S
					I	2
3	4	5	6	7	8	9
10	11	12	13	14	15	16
17	18	19	20	21	22	23
24	25	26	27	28	29	30

APRIL

S	M	T	W	T	F	S
					I	2
4	5	6	7	8	9	10
11	12	13	14	15	16	17
18	19	20	21	22	23	24
25	26	27	28	29	30	

JULY

S	M	T	W	T	F	S
					I	2
4	5	6	7	8	9	10
11	12	13	14	15	16	17
18	19	20	21	22	23	24
25	26	27	28	29	30	31

OCTOBER

S	M	T	W	T	F	S
					I	6
3	4	5	6	7	8	9
10	11	12	13	14	15	16
17	18	19	20	21	22	23
24	25	26	27	28	29	30

FEBRUARY

S	M	T	W	T	F	S
		I	2	3	4	5
7	8	9	10	11	12	13
14	15	16	17	18	19	20
21	22	23	24	25	26	27
28						

MAY

S	M	T	W	T	F	S
					I	
2	3	4	5	6	7	8
9	10	11	12	13	14	15
16	17	18	19	20	21	22
23	24	25	26	27	28	29

AUGUST

S	M	T	W	T	F	S
		I	2	3	4	5
8	9	10	11	12	13	14
15	16	17	18	19	20	21
22	23	24	25	26	27	28
29	30	31				

NOVEMBER

S	M	T	W	T	F	S
		I	2	3	4	5
7	8	9	10	11	12	13
14	15	16	17	18	19	20
21	22	23	24	25	26	27
28	29	30				

MARCH

S	M	T	W	T	F	S
		I	2	3	4	5
7	8	9	10	11	12	13
14	15	16	17	18	19	20
21	22	23	24	25	26	27
28	29	30	31			

JUNE

S	M	T	W	T	F	S
		I	2	3	4	5
6	7	8	9	10	11	12
13	14	15	16	17	18	19
20	21	22	23	24	25	26
27	28	29	30			

SEPTEMBER

S	M	T	W	T	F	S
				I	2	3
5	6	7	8	9	10	11
12	13	14	15	16	17	18
19	20	21	22	23	24	25
26	27	28	29	30		

DECEMBER

S	M	T	W	T	F	S
				I	2	3
5	6	7	8	9	10	11
12	13	14	15	16	17	18
19	20	21	22	23	24	25
26	27	28	29	30	31	

1999

JANUARY

S	M	T	W	T	F	S
					I	
2	3	4	5	6	7	8
9	10	11	12	13	14	15
16	17	18	19	20	21	22
23	24	25	26	27	28	29

APRIL

S	M	T	W	T	F	S
					I	
2	3	4	5	6	7	8
9	10	11	12	13	14	15
16	17	18	19	20	21	22
23	24	25	26	27	28	29

JULY

S	M	T	W	T	F	S
					I	
2	3	4	5	6	7	8
9	10	11	12	13	14	15
16	17	18	19	20	21	22
23	24	25	26	27	28	29

OCTOBER

S	M	T	W	T	F	S
					I	2
8	9	10	11	12	13	14
15	16	17	18	19	20	21
22	23	24	25	26	27	28
29	30	31				

FEBRUARY

S	M	T	W	T	F	S
		I	2	3	4	5
6	7	8	9	10	11	12
13	14	15	16	17	18	19
20	21	22	23	24	25	26
27	28	29				

MAY

S	M	T	W	T	F	S
		I	2	3	4	5
7	8	9	10	11	12	13
14	15	16	17	18	19	20
21	22	23	24	25	26	27
28	29	30	31			

AUGUST

S	M	T	W	T	F	S
		I	2	3	4	5
6	7	8	9	10	11	12
13	14	15	16	17	18	19
20	21	22	23	24	25	26
27	28	29	30	31		

NOVEMBER

S	M	T	W	T	F	S
				I	2	3
5	6	7	8	9	10	11
12	13	14	15	16	17	18
19	20	21	22	23	24	25
26	27	28	29	30		

MARCH

S	M	T	W	T	F	S
				I	2	3
5	6	7	8	9	10	11
12	13	14	15	16	17	18
19	20	21	22	23	24	25
26	27	28	29	30	31	

JUNE

S	M	T	W	T	F	S
					I	2
4	5	6	7	8	9	10
11	12	13	14	15	16	17
18	19	20	21	22	23	24
25	26	27	28	29	30	

SEPTEMBER

S	M	T	W	T	F	S
					I	2
3	4	5	6	7	8	9
10	11	12	13	14	15	16
17	18	19	20	21	22	23
24	25	26	27	28	29	30

DECEMBER

S	M	T	W	T	F	S
					I	2
3	4	5	6	7	8	9
10	11	12	13	14	15	16
17	18	19	20	21	22	23
24	25	26	27	28	29	30

2000

# January 2000

to Louis

1  
2  
3  
4  
5  
6  
7  
8  
9  
10  
11  
12  
13  
14  
15  
16  
17  
18  
19  
20  
21  
22  
23  
24  
25  
26  
27  
28  
29  
30  
31

Pa Ave South

at Staples 1st left

Left onto 391 - Columbus Blvd

1/2 mo on left Red Oak

Dale - left onto Midwood

1302 Midwood

Flowers all  
L - coleus in front of steps

By sunny light/deep orange  
under window impatiens red

L - pink combination

R - magenta - lt purple white

Trees - white or touch?

triangle - all white

Editing and production by  
Sally Fisher.

Design and typesetting by  
Katy Homans.

Color separation, printing,  
and binding by Arnaldo  
Mondadori Editore, Verona,  
Italy.

If you would like to order  
another copy of this calendar,  
please call 1-800-468-7386.

If you are interested in a  
Museum engagement calen-  
dar for the year 2000, please  
call the same number after  
June 15, 1999, for a descrip-  
tion of the subjects and an  
opportunity to place an order.

If you have suggestions or  
comments, please write to  
Engagement Calendar,  
Metropolitan Museum of  
Art, 255 Gracie Station,  
New York, NY 10028-9998.  
All proceeds from the sale  
of reproductions and publi-  
cations go directly to support  
The Metropolitan Museum of  
Art.



Follower of  
Gerard David  
(Netherlandish, about  
1525)

*The Adoration of the  
Magi (detail)*

Oil on wood; 27½ x 28¾ in.  
The Jack and Belle Linsky  
Collection, 1982  
(1982.60.17)

We see two of the kings  
and their retinue arriving  
in Bethlehem. Tradition-  
ally the kings symbolize  
all ages and races paying  
homage to Christ. By  
the time this picture was  
painted, one king was  
invariably black, to repre-  
sent Africa.

*Nutcracker*

*11:15 P.M  
Junk  
at AIR*

*Postman  
Charles  
"Stout"  
Nedorahki*  
Christmas Day

19  
SUNDAY

20  
MONDAY

21  
TUESDAY

22  
WEDNESDAY

23  
THURSDAY

24  
FRIDAY

25  
SATURDAY

DECEMBER

S	M	T	W	T	F	S
			1	2	3	4
5	6	7	8	9	10	11
12	13	14	15	16	17	18
19	20	21	22	23	24	25
26	27	28	29	30	31	

December

26  
SUNDAY

27  
MONDAY

28  
TUESDAY

29  
WEDNESDAY

30  
THURSDAY

31  
FRIDAY

I  
SATURDAY

Gerard David  
(Netherlandish, active by  
1484, died 1523)

*The Rest on the Flight  
into Egypt*

Oil on wood; 20 x 17 in.  
The Jules Bache Collection,  
1949 (49.7.21)

One of David's most popular as well as beautiful compositions was this one of the Virgin nursing the Christ child during a rest on their flight into Egypt. In the background the figures are seen again, making their way through a dense forest. As happens again and again in early Netherlandish painting, a play is made between the observer and the observed. Here it is the infant Christ who returns our glance.

8:30  
Cooper  
Call Cooper



Long

23.65  
25.7.65  
31.65  
314.30  
33.65

Suk

7:15  
A.M.

1:00  
C. Arden  
Beatrice

9:00  
Nienna  
Manogram

4:00  
Meeha

1:45  
Perry

2:30

JANUARY 2000						
S	M	T	W	T	F	S
						I
2	3	4	5	6	7	8
9	10	11	12	13	14	15
16	17	18	19	20	21	22
23	24	25	26	27	28	29
30	31					

New Year's Day

December-January



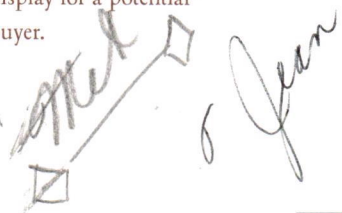
Robert Campin  
(Netherlandish, active by  
1406, died 1444)

*The Annunciation* (trip-  
tych) (detail)

Oil on wood; right wing 25 3/8  
x 10 1/4 in.

The Cloisters Collection,  
1956 (56.70)

This is another detail of  
Joseph's carpentry shop.  
(See the week of July 25,  
and fold-out 1 in the  
Introduction.) We look  
through a window onto  
an urban landscape. To  
achieve a maximum effect,  
Campin has shown the  
city as though it were  
below and far away,  
although he has placed a  
newly made mousetrap on  
display for a potential  
buyer.



1:30  
Sun

~~1:30~~  
Detail  
Concise  
10-8-3

Antioch Locator #  
097-591

55	-	55
68		80
123	-	135

5  
SUNDAY

6  
MONDAY

7  
TUESDAY

8  
WEDNESDAY

9  
THURSDAY

10  
FRIDAY

11  
SATURDAY

DECEMBER

S M T W T F S  
1 2 3 4  
5 6 7 8 9 10 11  
12 13 14 15 16 17 18  
19 20 21 22 23 24 25  
26 27 28 29 30 31

December

I 2  
SUNDAY

I 3  
MONDAY

*Rob. Piment Roon 9 Monday*  
*Pen 1:12*

I 4  
TUESDAY

*Ballet*

I 5  
WEDNESDAY

*Ray of Roon Monday*  
*Purple Hand*  
*Mc Carthy Pa*

I 6  
THURSDAY

I 7  
FRIDAY

I 8  
SATURDAY



Gerard David  
(Netherlandish, active by 1484, died 1523)

*The Nativity* (detail)  
Oil on canvas transferred from wood; 35½ x 28 in.  
The Jules Bache Collection, 1949 (49.7.20b)

No Netherlandish artist had a finer conception of angels than Gerard David. Here they descend into the stable where Christ lies in a manger, their gestures expressing various degrees and kinds of devotion.

DECEMBER

S	M	T	W	T	F	S
			1	2	3	4
5	6	7	8	9	10	11
12	13	14	15	16	17	18
19	20	21	22	23	24	25
26	27	28	29	30	31	

*December*

Juan de Flandes  
(Netherlandish, active by  
1496, died 1519)

*The Marriage Feast at  
Cana*

Oil on wood; 8¼ x 6¼ in.  
The Jack and Belle Linsky  
Collection, 1982  
(1982.60.20)

We look into an interior  
of a Renaissance loggia.  
In the back a convex mir-  
ror reflects the tabletop  
and the backs of the  
heads of the bride and  
groom and, notionally,  
the space we are standing  
in: a tour de force of the  
obliteration of subject/  
object. This miraculously  
detailed small painting  
was part of an extensive  
series Juan de Flandes  
carried out for Queen  
Isabella of Spain prior to  
1504.

21  
SUNDAY

8:00  
Schubert  
foot  
9:00

Bal A.K.

22  
MONDAY

23  
TUESDAY

Bal  
A.K. 1/2 day Snow

24  
WEDNESDAY

*Thanksgiving Day*

25  
THURSDAY

26  
FRIDAY

NOVEMBER

S	M	T	W	T	F	S
	1	2	3	4	5	6
7	8	9	10	11	12	13
14	15	16	17	18	19	20
21	22	23	24	25	26	27
28	29	30				

27  
SATURDAY

November

28  
SUNDAY

*H. Henry  
December*

29  
MONDAY

*8:00  
Schell*

30  
TUESDAY

*see  
pat  
19796*

1  
WEDNESDAY

*Holiday  
Homes*

2  
THURSDAY

*~~Wet  
A.H.K.~~*

3  
FRIDAY

*Hanukkah begins at sundown*

4  
SATURDAY



Lucas Cranach the Elder  
(German, 1472-1553)

*Judith with the Head of Holofernes (detail)*

Oil on wood; 35¼ x 24¾ in.  
Rogers Fund, 1911 (11.15)

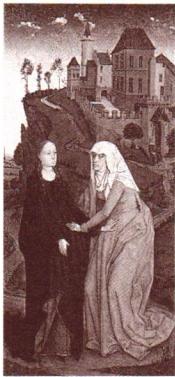
Judith was the Jewish maiden who seduced and beheaded the general of the enemy of her people. Here she is adorned “so as to allure the eyes of all men that should see her” (Judith 10:4, Apocrypha). Her elaborate costume—and especially the bejeweled collar—would certainly attract attention, even today.

DECEMBER

S	M	T	W	T	F	S
			1	2	3	4
5	6	7	8	9	10	11
12	13	14	15	16	17	18
19	20	21	22	23	24	25
26	27	28	29	30	31	

# November-December





~~Alone?~~  
1:00  
Bun

11-6  
12 6  
1 6

7  
SUNDAY

8  
MONDAY

~~1:00~~

9  
TUESDAY

Workshop of Rogier van der Weyden  
(Netherlandish, probably about 1460)

*The Nativity*  
(incomplete altarpiece)  
(detail)

Deposit  
Casperbyen

Oil on wood; left panel  
33 1/8 x 16 1/8 in.  
The Cloisters Collection,  
1949 (49.109)

10  
WEDNESDAY

This well-maintained complex of buildings forms the background of a depiction of Mary visiting her cousin Elizabeth. Once again, we are transported to the private dwelling of someone in northern Europe. Indeed, the architectural mixture and additive quality of the buildings suggest a specific site.

Pem

Veterans' Day

11  
THURSDAY

Jean's  
eye saying

12  
FRIDAY

NOVEMBER

S	M	T	W	T	F	S
	1	2	3	4	5	6
7	8	9	10	11	12	13
14	15	16	17	18	19	20
21	22	23	24	25	26	27
28	29	30				

13  
SATURDAY

November

14  
SUNDAY

*Shrove*

15  
MONDAY

16  
TUESDAY

*3:00 Ice  
Karlson*

~~*8:45  
Cooper*~~



17  
WEDNESDAY

~~*Cooper*~~  
*cleaning*

18  
THURSDAY

*go for  
Dina*

19  
FRIDAY

*1:00  
Dana*

20  
SATURDAY

*W*



Gerard David  
(Netherlandish, active by  
1484, died 1523)

*The Nativity (detail)*

Oil on canvas; transferred  
from wood; 35½ x 28 in.  
The Jules Bache Collection,  
1949 (49.7.20b)

This carefully observed  
basket contains linens to  
swaddle the infant Christ  
child. It is part of a  
religious still life that  
occasions melancholy  
thoughts: the adult Christ  
will have his body bound  
in cloth for burial, and his  
sacrifice will be commem-  
orated with bread made  
from the wheat beneath  
the basket lid.

NOVEMBER

S	M	T	W	T	F	S
	1	2	3	4	5	6
7	8	9	10	11	12	13
14	15	16	17	18	19	20
21	22	23	24	25	26	27
28	29	30				

November



Hans Holbein the Younger  
(German, 1497/98-1543)

Benedikt von Hertenstein  
(born about 1495, died 1522) (detail)

Oil on paper, laid down on wood; 20 1/4 x 14 3/8 in.  
Rogers Fund, aided by subscribers, 1906 (06.1038)

"When I looked like this I was twenty-two years old," the inscription on the wall informs us. Benedikt von Hertenstein was the son of a magistrate of Lucerne, Switzerland. The year this portrait was painted Holbein decorated the Hertenstein house with murals; the animated frieze in the picture gives an idea of the sort of work this may have involved.

24  
SUNDAY

25  
MONDAY

26  
TUESDAY

27  
WEDNESDAY

28  
THURSDAY

29  
FRIDAY

30  
SATURDAY

*golf*  
*Rock dog*  
*Will*  
*John's*  
*Matthew*

*Matthew*  
*10:00*  
*Mub*  
*3:30*  
*Pak Show*

*Big party*

OCTOBER

S	M	T	W	T	F	S
					1	2
3	4	5	6	7	8	9
10	11	12	13	14	15	16
17	18	19	20	21	22	23
24	25	26	27	28	29	30
31						

October

31  
SUNDAY

Halloween

Joachim Patinir  
(Netherlandish, active by  
1515, died 1524)

*The Penitence of Saint  
Jerome* (triptych)  
(detail)

Oil on wood; right wing  
47½ x 14 in.  
Fletcher Fund, 1936  
(36.14a-c)

In this detail (see fold-out  
illustration 2 in the Intro-  
duction) Saint Anthony  
is tormented by demons  
that seem to have come  
from the same collective  
memory drawn upon by  
George Lucas. Question:  
How does the birdlike  
creature open its ringed  
beak?

I  
MONDAY

*Game  
Dinner*

2  
TUESDAY

*1:00  
Bury  
store*

Election Day

3  
WEDNESDAY

4  
THURSDAY

5  
FRIDAY

6  
SATURDAY

*Harvest  
Ball*

~~11:00~~  
~~Patina~~  
*Conclude  
10-23*  
~~11:00~~  
*Surge of  
7:00*

NOVEMBER

S	M	T	W	T	F	S
	1	2	3	4	5	6
7	8	9	10	11	12	13
14	15	16	17	18	19	20
21	22	23	24	25	26	27
28	29	30				

October-November





Pieter Bruegel the Elder

(Netherlandish, active by 1551, died 1569)

*The Harvesters* (detail)

Oil on wood; 46½ x 63¼ in.  
Rogers Fund, 1919 (19.164)

The effects of summer midday heat have seldom been captured as convincingly as by Bruegel, in whose work the efforts of humankind can seem overwhelmed by nature.

*Joe McGowan*

~~11:45~~  
~~Kobler~~

10  
SUNDAY

11  
MONDAY

*Columbus Day observed*

*Jaylene Leonte*

12  
TUESDAY

*Columbus Day*

*3:15 Carter*  
*Mother*

13  
WEDNESDAY

14  
THURSDAY

15  
FRIDAY

16  
SATURDAY

OCTOBER

S	M	T	W	T	F	S
					1	2
3	4	5	6	7	8	9
10	11	12	13	14	15	16
17	18	19	20	21	22	23
24	25	26	27	28	29	30
31						

October

17  
SUNDAY

18  
MONDAY

19  
TUESDAY

Ritz  
Carlton  
Lunch  
20  
Riz  
Jama

WEDNESDAY

Mucks  
10:00  
Parker  
store  
21  
THURSDAY  
499 8284  
fly list #  
Carly  
J  
11-11  
Jama

9:00  
22  
FRIDAY  
Parker

23  
SATURDAY



Joos van Cleve  
(Netherlandish, active by  
1507, died 1540/41)

*Virgin and Child*  
(detail)

Oil on wood; 27¼ x 20¼ in.  
The Jack and Belle Linsky  
Collection, 1982  
(1982.60.47)

The Virgin's hand points  
to her beautifully illumi-  
nated book of hours  
containing passages from  
Psalms and Luke. The  
walnut has a sacred  
meaning—its meat sug-  
gests Christ's divine  
nature while the shell rep-  
resents the wood of the  
cross. In this way, the still  
life introduces us through  
familiar-seeming objects  
into a world infused with  
divine meaning.

OCTOBER

S	M	T	W	T	F	S
					1	2
3	4	5	6	7	8	9
10	11	12	13	14	15	16
17	18	19	20	21	22	23
24	25	26	27	28	29	30
31						

October



Northern French  
Painter  
(about 1450)

*The Annunciation*  
(detail)

Oil on wood; 45 x 31 in.  
The Friedsam Collection,  
Bequest of Michael Friedsam,  
1931 (31.100.109)

The window in this  
pavilionlike chamber  
offers no view: rather, a  
star-studded, heraldic  
field and a fluttering  
banner bearing the words  
of Gabriel's salutation:  
"the Lord is with you."

26  
SUNDAY

27  
MONDAY

28  
TUESDAY

29  
WEDNESDAY

30  
THURSDAY

1  
FRIDAY

2  
SATURDAY

*Charron's  
Bowl*

*Holocaust  
11.00*

*Annunciation*

*Jus  
mg*

*final  
ann  
noon*

*57  
gas*

*gem*

*er!*  
*Dec*

OCTOBER

S	M	T	W	T	F	S
					1	2
3	4	5	6	7	8	9
10	11	12	13	14	15	16
17	18	19	20	21	22	23
24	25	26	27	28	29	30
31						

September-October

11:00  
 3  
 SUNDAY  
 Monday  
 4  
 MONDAY

9:15  
 11:15  
 29 AB  
 21 AB

Conf # DWKENN  
 chg Atlanta  
 1:02  
 5:40  
 15 AB  
 19 AB

note  
 7-18  
 180.27



Lucas Cranach the Elder  
 (German, 1472-1553)

*Christ Blessing the Children* (detail)

Oil on wood; 6½ x 8¾ in.  
 The Jack and Belle Linsky Collection, 1982  
 (1982.60.36)

We saw some of the mothers and babies from this miniature-size picture during the week of January 10. Its tone is epitomized by this detail of a little girl offering her doll to be blessed by Christ.

5  
 TUESDAY

6  
 WEDNESDAY

7  
 THURSDAY

8  
 FRIDAY

9  
 SATURDAY

OCTOBER

S	M	T	W	T	F	S
					1	2
3	4	5	6	7	8	9
10	11	12	13	14	15	16
17	18	19	20	21	22	23
24	25	26	27	28	29	30
31						

October



Albrecht Dürer  
(German, 1471-1528)

*Melancholia I*

Engraving; 9½ x 7⅞ in.  
Harris Brisbane Dick Fund,  
1943 (43.106.1)

By the sixteenth century, melancholy characterized the artist's temperament, bringing with it the inability to act (something that does not plague the busy *putto* seated on a millstone). The presence of the geometric instruments and architectural tools only makes the morose torpor of the winged figure of Melancholy—a sort of spiritual portrait of Dürer—more acute.

*Water  
acrylics*

*goef*  
10:00  
*Dr. Cooper*

*Putto  
with*

12  
SUNDAY

13  
MONDAY

14  
TUESDAY

15  
WEDNESDAY

16  
THURSDAY

17  
FRIDAY

18  
SATURDAY

*Lobster  
Bake*

*REPRODUCED  
12/15/15  
12/13  
5D*

*Have  
6:00  
Beverages*

SEPTEMBER

S	M	T	W	T	F	S
			1	2	3	4
5	6	7	8	9	10	11
12	13	14	15	16	17	18
19	20	21	22	23	24	25
26	27	28	29	30		

September

19  
SUNDAY

Yom K

Hans Memling  
(Netherlandish, active  
about 1465, died 1494)

20  
MONDAY

*Maria Maddalena  
Baroncelli (born 1456),  
Wife of Tommaso  
Portinari*

Oil on wood; 16 5/8 x 12 5/8 in.  
Bequest of Benjamin  
Altman, 1913 (14.40.627)

21  
TUESDAY

*Ballet  
8:00*

~~*golf*~~

The necklace Maria  
Baroncelli wears must  
have been a prized piece  
of jewelry, for she wore it  
again years later, when  
she posed for a donor por-  
trait in the celebrated  
*Portinari Altarpiece* in the  
Uffizi, Florence. Maria  
was fourteen when she  
married Tommaso  
Portinari, the man who  
ruined the Medici bank  
he headed in Bruges.

22  
WEDNESDAY

*9:30  
Garfunkel  
Return*

23  
THURSDAY

~~*[scribble]*~~

24  
FRIDAY

*Lobster  
Dinner*

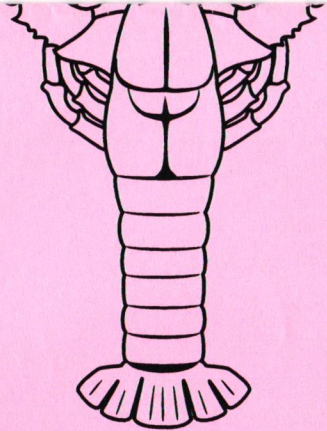
*gms  
coffee*

25  
SATURDAY

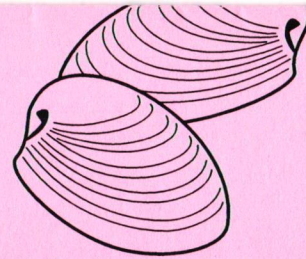
SEPTEMBER

S	M	T	W	T	F	S
		1	2	3	4	
5	6	7	8	9	10	11
12	13	14	15	16	17	18
19	20	21	22	23	24	25
26	27	28	29	30		

September



Corn on the Cob  
Boiled Potatoes  
Soup & Salad Bar  
Fresh Melons  
Assorted Desserts



(price determined by market)

Dining & Dancing to the sounds of the  
***PAN MASTERS STEEL ORCHESTRA***

***Reservations Required***

(all cancellations must be made within 48 hrs.)

**Note: The Dining Room & Grill Kitchens Closed**



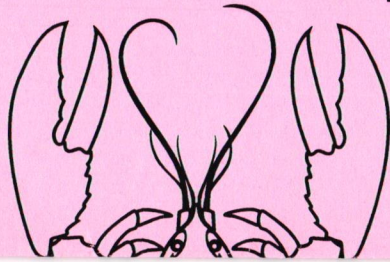
*Washington Golf & Country Club*  
annual

*New England Style*  
**LOBSTER BAKE**

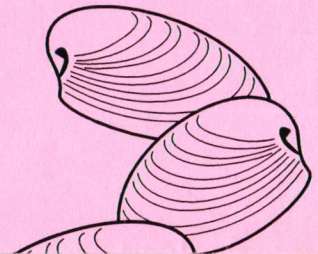
**Friday, September 17, 1999**

**6:00 p.m. - until**

**Upper & Lower Terrace**



Maine Lobster  
Steamed Mussels & Clams  
Barbequed Chicken



*Map  
of  
Cleveland  
Holland*



29  
SUNDAY

30  
MONDAY

Joos van Cleve  
(Netherlandish, active by  
1507, died 1540/41)

*The Annunciation*  
(detail)

Oil on wood; 34 x 31½ in.  
The Friedsam Collection,  
Bequest of Michael  
Friedsam, 1931 (32.100.60)

This is hardly a simple  
view of a domestic in-  
terior. The woodcut  
tacked up on the wall and  
the portable altarpiece  
suggest Old Testament  
themes and have been  
carefully chosen to relate  
to the subject of the  
Annunciation. Yet  
objects similar to these  
must have decorated  
many well-to-do house-  
holds in the Netherlands.

*10:00  
Karleni*

• 31  
TUESDAY

1  
WEDNESDAY

2  
THURSDAY

3  
FRIDAY

4  
SATURDAY

SEPTEMBER

S	M	T	W	T	F	S
			1	2	3	4
5	6	7	8	9	10	11
12	13	14	15	16	17	18
19	20	21	22	23	24	25
26	27	28	29	30		

*August-September*



5  
SUNDAY

Hans Suess von  
Kulmbach  
(German, born about  
1480, died 1521/22)

*Girl Making a Garland*

Oil on wood; 7 x 5 1 1/2 in.  
Gift of J. Pierpont Morgan,  
1917 (17.190.21)

This is actually the reverse  
side of a portrait of a  
young man—conceivably  
a gift to his betrothed.  
This would explain the  
poetic conceit: the scroll  
reads "I bind with forget-  
me-nots." The initials  
AD refer to Albrecht  
Dürer and were added  
much later to give the pic-  
ture a more illustrious  
attribution.

6  
MONDAY

*Labor Day*

*golf*

*Man*

7  
TUESDAY

~~*Daniel*~~  
~~*to 100*~~

*9:30*  
*Karlín*

8  
WEDNESDAY

9  
THURSDAY

*100*  
*100*  
~~*Co Hays*~~  
~~*2 BR*~~  
~~*1, 2, 3, 4*~~  
~~*17*~~  
~~*200*~~  
~~*100*~~  
*7:20*  
*am.*

*Helon* *Mon* ~~*Alled*~~  
*Loren*  
*Lu J* *S + M*  
*J + B* *Michael*  
*W ellom*  
*C + K*  
*Ally*  
*Jan*  
*Mauber*  
*(15)*

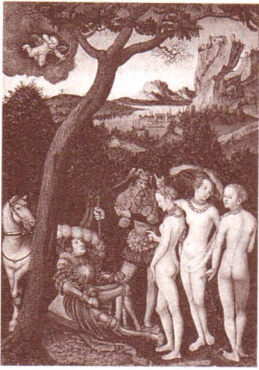
Rosh Hashanah begins at sundown

11  
SATURDAY

SEPTEMBER

S	M	T	W	T	F	S
			1	2	3	4
5	6	7	8	9	10	11
12	13	14	15	16	17	18
19	20	21	22	23	24	25
26	27	28	29	30		

September



Lucas Cranach the Elder

(German, 1472-1553)

*The Judgment of Paris*  
(detail)

Oil on wood; 40 1/8 x 28 in.  
Rogers Fund, 1928 (28.221)

Paris was given the enviable task of judging the relative beauty of Venus, Diana, and Minerva, each of whom attempted a bribe. But these coquettes—who are in fact indistinguishable one from the other—are quite obviously displaying their charms to us, not Paris.

AUGUST

S	M	T	W	T	F	S
1	2	3	4	5	6	7
8	9	10	11	12	13	14
15	16	17	18	19	20	21
22	23	24	25	26	27	28
29	30	31				

*Roger*

~~*Roger*~~  
10:45  
11:30 Le Blanc

15  
SUNDAY

16  
MONDAY

17  
TUESDAY

18  
WEDNESDAY

19  
THURSDAY

20  
FRIDAY

21  
SATURDAY

August

22  
SUNDAY

~~conv~~

Rogier van der  
Weyden  
(Netherlandish, about  
1400-1464)

*Francesco d'Este*

Tempera and oil on wood;  
11 1/4 x 8 in.  
The Friedsam Collection,  
Bequest of Michael Friedsam,  
1931 (32.100.43)

23  
MONDAY

*Memo  
guest  
A. Pavy*

Italian by birth, Francesco  
d'Este was sent to the  
court of Burgundy to be  
educated. Rogier makes  
him a paradigm of aristo-  
cratic hauteur. The ham-  
mer and ring are either  
heraldic devices or tourna-  
ment prizes.

24  
TUESDAY

25  
WEDNESDAY

*9:30  
Oman*

26  
THURSDAY

~~9:00~~  
~~9:00~~

~~conv~~  
3:45  
Karl

27  
FRIDAY

28  
SATURDAY

*Rainy  
Party  
6:30  
Wgcc*

*10:00  
Anna*

AUGUST

S	M	T	W	T	F	S
1	2	3	4	5	6	7
8	9	10	11	12	13	14
15	16	17	18	19	20	21
22	23	24	25	26	27	28
29	30	31				

August



Follower of Rogier van der Weyden  
(Netherlandish, second half of 15th century)

*The Annunciation*  
(detail)

Oil on wood; 73 1/4 x 45 1/4 in.  
Gift of J. Pierpont Morgan, 1917 (17.190.7)

The well-tended garden we view through a window of the Virgin's bedroom is a symbol of her chastity. The care that has been lavished on maintaining it offers food for thought as well as visual delight.

9.15  
Cooper

AUGUST

S	M	T	W	T	F	S
1	2	3	4	5	6	7
8	9	10	11	12	13	14
15	16	17	18	19	20	21
22	23	24	25	26	27	28
29	30	31				

3.03  
Daniel

1  
SUNDAY

Joe N.C.

2  
MONDAY

Laura  
~~Brookwood~~  
gay  
Helen Joe N.C.

3  
TUESDAY

Leon Joe N.C.

4  
WEDNESDAY

Joe N.C.

5  
THURSDAY

6  
FRIDAY

7  
SATURDAY

August

8  
SUNDAY

9  
MONDAY

~~9:30~~  
~~Dr. Cooper~~

10  
TUESDAY

6:00  
~~Me~~ Chez Auberge

11  
WEDNESDAY

~~11:00~~  
~~Dr. Cooper~~

12  
THURSDAY

13  
FRIDAY

5 after  
son - Doug  
golf

14  
SATURDAY

Break 4:00  
~~11:00~~  
Journey  
8:00



Pieter Bruegel the Elder  
(Netherlandish, active by 1551, died 1569)

*The Harvesters* (detail)  
Oil on wood; 46½ x 63¼ in.  
Rogers Fund, 1919 (19.164)

Bruegel makes his distant views as compelling as his foreground scenes. Our eye glides over the golden fields and beyond the pear tree to a green valley where children play games near their thatched-roof homes.

AUGUST

S	M	T	W	T	F	S
1	2	3	4	5	6	7
8	9	10	11	12	13	14
15	16	17	18	19	20	21
22	23	24	25	26	27	28
29	30	31				

August



*Wed Events  
Kelly?*

18  
SUNDAY



Israhel van Meckenem

(German, active 1457-1495)

*Lute and Harp Duet*  
(detail)

Engraving; 6¼ x 4¼ in.  
Harris Brisbane Dick Fund,  
1927 (27.5.2)

The seemingly innocent pastime of making music was often viewed as a prelude to love, making the subject of this print a bit pithier than might be thought at first glance. The closed chest in front of the woman and the open lute case in front of the man are probably sexual allusions.

*Gay*

19  
MONDAY

20  
TUESDAY

21  
WEDNESDAY

22  
THURSDAY

23  
FRIDAY

JULY

S	M	T	W	T	F	S
				1	2	3
4	5	6	7	8	9	10
11	12	13	14	15	16	17
18	19	20	21	22	23	24
25	26	27	28	29	30	31

24  
SATURDAY

*July*

25  
SUNDAY

26  
MONDAY

27  
TUESDAY

28  
WEDNESDAY

29  
THURSDAY

30  
FRIDAY

31  
SATURDAY

Robert Campin  
(Netherlandish, active by  
1406, died 1444)

*The Annunciation*  
(triptych) (detail)

Oil on wood; right wing  
25 $\frac{3}{8}$  x 10 $\frac{1}{4}$  in.  
The Cloisters Collection,  
1956 (56.70)

This astonishing detail  
takes us into the intimacy  
of Saint Joseph's carpenter  
shop. The mousetrap  
he has made is no simple  
contraption: It refers to  
Christ's coming into  
the world as a divine  
mousetrap to capture the  
devil. (See fold-out 1  
in the Introduction for  
an illustration of the full  
triptych.)

~~St Joseph~~  
~~St Joseph~~  
St Joseph

3.00  
Kaslin

JULY

S	M	T	W	T	F	S
				1	2	3
4	5	6	7	8	9	10
11	12	13	14	15	16	17
18	19	20	21	22	23	24
25	26	27	28	29	30	31

July



Independence Day

4  
SUNDAY

Master of the Saint  
Godelieve Legend  
(Netherlandish, active last  
quarter of 15th century)

*The Life and Miracles  
of Saint Godelieve*  
(detail)

Oil on wood; 49 1/4 x 126 in.  
(central panel shown above)  
John Stewart Kennedy  
Fund, 1912 (12.79)

In the week of April 18,  
we left Godelieve at her  
marriage to the wealthy  
landowner Bertolf. Here  
we see the beginning of  
her trials and tribulations,  
engineered by Bertolf's  
mother. Godelieve is to  
keep the crows out of the  
fields, and she does so by  
convincing them to stay in  
a little hut while she goes  
to mass. The maid reports  
the deed, and accusations  
of witchcraft ensue.

*gog  
call to  
cancel  
dorming*

5  
MONDAY

6  
TUESDAY

7  
WEDNESDAY

8  
THURSDAY

9  
FRIDAY

JULY

S	M	T	W	T	F	S
				1	2	3
4	5	6	7	8	9	10
11	12	13	14	15	16	17
18	19	20	21	22	23	24
25	26	27	28	29	30	31

10  
SATURDAY

July

II  
SUNDAY

*Key to creation*

I 2  
MONDAY

*Rainbow*

*Mr Cooper 1:45*

I 3  
TUESDAY

I 4  
WEDNESDAY

I 5  
THURSDAY

I 6  
FRIDAY

I 7  
SATURDAY



Lucas Cranach the Elder

(German, 1472-1553)

*Christ and the Adulteress (detail)*

Oil on wood; 6¼ x 8½ in.  
The Jack and Belle Linsky Collection, 1982  
(1982.60.35)

These fine, upstanding citizens are being denied by Christ the pleasure of stoning an adulteress. The prickly soldier had come well equipped for the task. This small panel served as a sermon in miniature.

JULY

S	M	T	W	T	F	S
				1	2	3
4	5	6	7	8	9	10
11	12	13	14	15	16	17
18	19	20	21	22	23	24
25	26	27	28	29	30	31

*July*



Father's Day

*Caesar  
Charities*

20  
SUNDAY

21  
MONDAY

Hans Baldung (called  
Grien)

(German, 1484/85-1545)

*Saint John on Patmos*  
(detail)

Oil on wood; 34 $\frac{3}{8}$  x 29 $\frac{3}{4}$  in.  
Purchase, Rogers and Fletcher  
Funds; The Vincent Astor  
Foundation, The Dillon  
Fund, The Charles Engelhard  
Foundation, Lawrence A.  
Fleischman, Mrs. Henry J.  
Heinz II, The Willard T. C.  
Johnson Foundation Inc.,  
Reliance Group Holdings  
Inc., Baron H. H. Thyssen-  
Bornemisza, and Mr. and Mrs.  
Charles Wrightsman Gifts;  
Joseph Pulitzer Bequest; spe-  
cial funds; and other gifts and  
bequests, by exchange, 1983  
(1983.451)

Part of the fascination of  
this detail derives from the  
heraldic but essentially two-  
dimensional eagle standing  
on the strongly three-dimen-  
sional block of a book. The  
eagle is the symbol of the  
evangelist John.

JUNE

S	M	T	W	T	F	S
		1	2	3	4	5
6	7	8	9	10	11	12
13	14	15	16	17	18	19
20	21	22	23	24	25	26
27	28	29	30			

~~*July*~~

22  
TUESDAY

~~*July*~~

5:30  
6:00  
P.J. Extreme  
II

*surgery*

23  
WEDNESDAY

~~*July*~~

24  
THURSDAY

25  
FRIDAY

*Wionki*

26  
SATURDAY

June



27  
SUNDAY

28  
MONDAY

golf  
Baker  
8:30

2:45  
Karlin  
Bettler

Dr  
Cooper  
1:15

29  
TUESDAY

30  
WEDNESDAY

9:30  
Dance  
Canceled  
6-22-99

1  
THURSDAY

2  
FRIDAY

3  
SATURDAY



Gerard David  
(Netherlandish, active by  
1484, died 1523)

*Virgin and Child with  
Four Angels (detail)*

Oil on wood; 24 7/8 x 15 1/8 in.  
Gift of Mr. and Mrs.  
Charles Wrightsman, 1977  
(1977.1.1)

The charming, lute-play-  
ing angel that regards you  
so intently was intended  
by David as a visual link  
between the viewer and  
the vision he has conjured  
of the Virgin, who  
appears in a Gothic por-  
tal that frames a view of  
Bruges. It is no accident  
that the position of the  
lute is aligned with the  
path leading into the  
background.

JULY

S	M	T	W	T	F	S
				1	2	3
4	5	6	7	8	9	10
11	12	13	14	15	16	17
18	19	20	21	22	23	24
25	26	27	28	29	30	31

June-July



Hans Memling  
(Netherlandish, active  
about 1465, died 1494)

*The Annunciation*  
(detail)

Oil on canvas, transferred  
from wood; 31 x 21 1/2 in.  
Robert Lehman Collection,  
1975 (1975.1.111)

Take away the holy figures  
in this Annunciation  
and you have a vision of  
the order and calm that  
were the ideal of bour-  
geois households in  
fifteenth-century Bruges—  
a foretaste of that Dutch  
affection for tidiness  
that, two centuries later,  
Vermeer raised to poetic  
heights.

*Mrs Sat*

6  
SUNDAY

7  
MONDAY

*gay*

8  
TUESDAY

*2:45  
Karin for  
cleaning*

9  
WEDNESDAY

*Montclair  
9:00*

*Judy  
Bruce  
569-2910  
Called  
Just*

10  
THURSDAY

*9:30  
Chaz Han*

11  
FRIDAY

JUNE

S	M	T	W	T	F	S
		1	2	3	4	5
6	7	8	9	10	11	12
13	14	15	16	17	18	19
20	21	22	23	24	25	26
27	28	29	30			

12  
SATURDAY

June

13  
SUNDAY

14  
MONDAY

*Member  
guest*

15  
TUESDAY

*Etienne Dinner  
Club  
Charlity  
Dinner*

16  
WEDNESDAY

*Race  
date  
Charlity  
Lois  
Lunch*

17  
THURSDAY

*J. Jones  
grief*

18  
FRIDAY

19  
SATURDAY

Unknown British  
Painter  
(16th century)

*Portrait of a  
Noblewoman*

Oil on wood; 44½ x 34¾ in.  
Gift of J. Pierpont Morgan,  
1911 (11.149.1)

Jeweled splendor—  
constricting in its abun-  
dance—is the keynote of  
this portrait. One might  
well ask whether material  
display has not, in fact,  
ended by abolishing the  
body.

*5:30  
meal  
over*

JUNE

S	M	T	W	T	F	S
		1	2	3	4	5
6	7	8	9	10	11	12
13	14	15	16	17	18	19
20	21	22	23	24	25	26
27	28	29	30			

June

Hans Holbein the Younger  
(German, 1497/98-1543)

Portrait of a Member of the Wedigh Family, Probably Hermann Wedigh (died 1560)

Oil on wood; 16 7/8 x 12 1/4 in.  
Bequest of Edward S. Harkness, 1950 (50.135.4)

A member of the Hanseatic trading company in London scrutinizes us from behind a cloth-covered table. A sheet of paper inserted in his book is inscribed with an epigram from Terence:

"Truth breeds hatred."  
Not only does this tell us something about the character and cultural aspirations of the sitter, the paper itself seems to break through the picture plane into our space, creating a startling sense of actuality.

23  
SUNDAY

24  
MONDAY

*Gay*  
10:15  
*Choue*

*Ext 2*  
*main level*  
*R. in lobby 2:45*  
*part 2 sets - Cooper*  
*of it. - Cooper*  
*shorter R. 2519H*

TUESDAY

*check*  
*swing*  
*clinic*

*shower*  
11:30

*cleaning*

26  
WEDNESDAY

*London*  
*Journal*  
*opening date for*  
*app metal*

2:00  
*Prone*  
*massage*  
*&*  
*pedicure*

*Beetley*  
*Little Run Jumpkin*  
*Brookside Rd left*  
*across from*  
*Hendrickson*

THURSDAY

7:30  
*Journal*

*Call*  
*the*  
*Junie*

28  
FRIDAY

MAY

S	M	T	W	T	F	S
						1
2	3	4	5	6	7	8
9	10	11	12	13	14	15
16	17	18	19	20	21	22
23	24	25	26	27	28	29
30	31					

29  
SATURDAY

May

30  
SUNDAY

Memorial Day



31  
MONDAY

Memorial Day observed

*golf*  
*Angie arrived*

*Karlino 3:00*  
*Bucks*

Lucas Cranach the Elder

(German, 1472-1553)

*Nymph of the Spring*  
(detail)

Oil on wood; 6 x 8 in.  
Robert Lehman Collection,  
1975 (1975.I.136)

We saw the coy nymph during the week of February 14; now we see the spring with which she is associated—a place of pastoral retreat.

1  
TUESDAY

*6:30 dinner*  
*Shane*

2  
WEDNESDAY

3  
THURSDAY

*Mark's car*

4  
FRIDAY

*Mark's car*

5  
SATURDAY

JUNE

S	M	T	W	T	F	S
	1	2	3	4	5	
6	7	8	9	10	11	12
13	14	15	16	17	18	19
20	21	22	23	24	25	26
27	28	29	30			

May-June





Mother's Day

*Handwritten initials*

*Ben Show*

9  
SUNDAY

10  
MONDAY

Pieter van der Heyden  
(Netherlandish, born  
about 1525, died 1569)

Spring (after Pieter  
Bruegel the Elder)  
(detail)

Engraving; 9 x 11 3/8 in.  
Harris Brisbane Dick Fund,  
1926 (26.72.57)

*C. Emery*  
*Gay 9:24*  
*Kay Shuky*

11  
TUESDAY

Bruegel produced the  
drawing for this print of  
spring in 1565, the same  
year he painted the sum-  
mer vision of *The Harves-*  
*ters*. Here he describes  
the maintenance of an  
enclosed, formal garden  
rather than peasant labor  
in the open fields. To a  
degree, the gardener in the  
foreground can be seen as  
Bruegel's common-man  
version of the ideal nudes  
of Michelangelo's Sistine  
ceiling.

~~12:30~~  
~~12:30~~  
*clearing*  
*Jess Merny 8:00*

12  
WEDNESDAY

13  
THURSDAY

*Ella*  
*Wendy*  
*Boyd*

14  
FRIDAY

*Ella*

15  
SATURDAY

MAY

S	M	T	W	T	F	S
						1
2	3	4	5	6	7	8
9	10	11	12	13	14	15
16	17	18	19	20	21	22
23	24	25	26	27	28, 29	
30	31					

*Mosher*  
*Cherry*

May

16  
SUNDAY

*Max  
Event*  
*Bell*

17  
MONDAY

18  
TUESDAY

*Memo  
Journal.*

*cleaning*

19  
WEDNESDAY

*9:00*

20  
THURSDAY

*9:30  
Dinner*

21  
FRIDAY

*Puppy  
Hark*

*Polish Sisters  
6:00 Service  
of Conf Rm*

22  
SATURDAY

Antwerp Mannerist  
(Netherlandish, first quar-  
ter of 16th century)

*A Sermon on Charity*

Oil on wood; 33½ x 23 in.  
Rogers Fund, 1908  
(08.183.2)

At the left a well-to-do  
youth listens to a reading  
about charity; in the right  
background he distributes  
his goods to the poor.

This is a picture of con-  
trasts: interior/exterior,  
city/country, rich /poor,  
healthy/afflicted. The  
unfinished church re-  
minds us that we must  
complete the edifice of  
society.

MAY

S	M	T	W	T	F	S
						1
2	3	4	5	6	7	8
9	10	11	12	13	14	15
16	17	18	19	20	21	22
23	24	25	26	27	28	29
30	31					

May



*Max  
Event  
Ruediger*

25  
SUNDAY

*Arfox*

Netherlandish Painter  
and the Master of the  
Female Half-Lengths  
(early 16th century)

26  
MONDAY

*The Rest on the Flight  
into Egypt (detail)*

*golf 9:10*

Oil on wood; 23 1/8 x 28 in.  
H. O. Havemeyer Collection,  
Bequest of Mrs. H. O.  
Havemeyer, 1929 (29.100.599)

27  
TUESDAY

Collaboration was com-  
mon in sixteenth-century  
workshops. The rather  
mundane figures of the  
Virgin and child in this  
painting have been left out  
of our detail to afford a  
better view of the mar-  
velous landscape painted  
by the gifted anonymous  
Master of the Female Half-  
Lengths. The viewer is  
encouraged to wander, like  
the Holy Family itself, on  
the arduous journey to  
Egypt.

*Clenny*

606 6176  
*if can't make  
it  
28*

WEDNESDAY

*Bowling  
Banquet 6:30*

*Lois  
10:00*

29  
THURSDAY

~~*H. 30  
D. 30*~~

30  
FRIDAY

*Jove*

MAY

S	M	T	W	T	F	S
						I
2	3	4	5	6	7	8
9	10	11	12	13	14	15
16	17	18	19	20	21	22
23	24	25	26	27	28	29
30	31					

I  
SATURDAY

*April-May*

2  
SUNDAY

3  
MONDAY

4  
TUESDAY

5  
WEDNESDAY

6  
THURSDAY

7  
FRIDAY

8  
SATURDAY



Gerard David  
(Netherlandish, active by 1484, died 1523)

*The Annunciation:  
The Virgin (detail)*

Oil on wood; 30½ x 24¾ in.  
Bequest of Mary Stillman  
Harkness, 1950 (50.145.9b)

This is a detail from the companion to the panel we saw during the week of March 21. A set of luxurious rosary beads, kept in a red purse, and an open prayer book on a small lectern, or prie-dieu, make up this domestic still life in the house of the Virgin Mary.

*Rever Bend  
9:00 arfof*

*Noon  
cleaning*

*T. T.  
Phyllis  
A.M.  
356 3788*

*Jove*

MAY

S	M	T	W	T	F	S
						I
2	3	4	5	6	7	8
9	10	11	12	13	14	15
16	17	18	19	20	21	22
23	24	25	26	27	28	29
30	31					

May



Jean Hey

(Netherlandish, active fourth quarter of 15th century)

Young Princess, probably Margaret of Austria (1480-1530)

Oil on wood; 13 1/2 x 9 1/2 in. Robert Lehman Collection, 1975 (1975.1.130)

Shown holding a rosary, most likely Margaret originally faced an image of the Madonna and child, painted on a now-lost panel. Her collar is embroidered with the initials C and M, signifying her union with Charles VIII, king of France, and the shells on her headdress are part of the insignia of the Bourbon dynasty. The landscape in the background may well be a favorite residence.

*Marye Lury*

561 4865  
731

*Car all*

*Arford*  
*Saufof*  
9:00

9:00 white

*Arford* 3:00  
*Artho*

*A. N. Arlington*  
8:30 *Arford*

*Mt Vernon*  
9:00 *Arford*

*Mario*

I I  
SUNDAY

I 2  
MONDAY

I 3  
TUESDAY

I 4  
WEDNESDAY

I 5  
THURSDAY

I 6  
FRIDAY

I 7  
SATURDAY

APRIL

S	M	T	W	T	F	S
					1	2
					3	4
5	6	7	8	9	10	11
12	13	14	15	16	17	18
19	20	21	22	23	24	25
26	27	28	29	30		

April

18  
SUNDAY

*Hemlock*

19  
MONDAY

*Fun Home  
Ken Center Springfield - arford  
7:30*

20  
TUESDAY

*Home  
Returning*

*9-11  
Coffman  
Meeting*

21  
WEDNESDAY

*Westwood  
8:30  
arford*

*Core  
Pois*

22  
THURSDAY

*golf  
Casper  
Ludlow*

23  
FRIDAY

*Back  
at  
Ar*

24  
SATURDAY



Master of the Saint  
Godelieve Legend

(Netherlandish, active last  
quarter of 15th century)

*The Life and Miracles of  
Saint Godelieve* (detail)

Oil on wood; 49 3/4 x 126 in.  
(central panel shown above)  
John Stewart Kennedy Fund,  
1912 (12.79)

With all the narrative  
charm of popular wood-  
cuts, this large altarpiece  
recounts the life of the  
eleventh-century martyr  
of Ghistelles. Here we see  
a feast given by Godelieve's  
parents for the count of  
Boulogne. The young saint  
had given the delicacies  
intended for the banquet to  
the poor, but her prayers  
were answered when angels  
brought new food (see  
background scenes). In  
the subsequent section  
Godelieve marries the rich  
landowner Bertolf, and  
her woes begin.

APRIL

S	M	T	W	T	F	S
				1	2	3
4	5	6	7	8	9	10
11	12	13	14	15	16	17
18	19	20	21	22	23	24
25	26	27	28	29	30	

April

Robert Peake the Elder

(British, active by 1576, died 1619)

Henry Frederick (1594-1612), Prince of Wales, and Sir John Harington (1592-1614)

Oil on canvas; 79½ x 58 in. Purchase, Joseph Pulitzer Bequest, 1944 (44.27)

Peake belongs to the tradition established by Nicholas Hilliard. He was eventually replaced at court by the second great name in Elizabethan miniature painting, Isaac Oliver. This lifesize portrait of the Prince of Wales has all the allure of an oversize miniature.

*Palm Sunday*

J H 10 5 8 3  
9:20  
#2448  
11:20  
3-14  
7F

28  
SUNDAY

29  
MONDAY

30  
TUESDAY

~~10:00~~  
~~Sarah~~

*Passover begins at sundown*

31  
WEDNESDAY

1  
THURSDAY

*Good Friday*

2  
FRIDAY

APRIL

S	M	T	W	T	F	S
				1	2	3
4	5	6	7	8	9	10
11	12	13	14	15	16	17
18	19	20	21	22	23	24
25	26	27	28	29	30	

3  
SATURDAY

March-April

4  
SUNDAY

*John*

25 27  
8:40 9F

Easter Sunday

*7*



Northern French  
Painter  
(about 1450)  
*The Legend of Saint  
Anthony Abbot (detail)*  
Oil on wood; 45 x 31 in.  
The Friedsam Collection,  
Bequest of Michael  
Friedsam, 1931  
(31.100.110-11)

The wilderness of this picture is obviously northern France embellished with rocky hills. The monastery is not less French: a beautiful example of late Gothic architecture. Our view, then, is not onto the world of Saint Anthony in fourth-century Egypt, but fifteenth-century France.

5  
MONDAY

*Boef  
M. King 9:00*

6  
TUESDAY

*3:00  
M. Adams*

7  
WEDNESDAY

*9:30  
10:40  
M. King  
5:25  
5:08*

8  
THURSDAY

*3:00  
M. Adams  
M. King*

*opening day Boef  
8:30  
Shutgun*

9  
FRIDAY

*No office*

10  
SATURDAY

APRIL

S	M	T	W	T	F	S
				1	2	3
4	5	6	7	8	9	10
11	12	13	14	15	16	17
18	19	20	21	22	23	24
25	26	27	28	29	30	

April



French Workshop  
(about 1500)

14  
SUNDAY

*Call 1:00*

Playing at Quintain

Silver stain and grisaille  
paint on colorless glass;  
8 x 9½ in.  
The Cloisters Collection,  
1980 (1980.223.6)

15  
MONDAY

By a fluke of history,  
those early Northern Ren-  
aissance paintings that  
have come down to us are  
almost invariably religious  
in subject matter. To get  
an idea of what the genre  
work of these artists  
looked like we must turn  
to other media: prints,  
tapestries, and painted  
glass roundels, like this  
one showing a peasant  
couple horsing around.

*Kennedy  
Center*

*7:30*

*9:30  
M. Allen*

16  
TUESDAY

*St. Patrick's Day*

17  
WEDNESDAY

*Lois 10:00*

*150  
42  
192*

18  
THURSDAY

*John*

*1:00  
5:15-8:30  
Eckerd Food  
Room*

*12:10*

19  
FRIDAY

*June*

*Bookery*

*6:30 P.M.*

20  
SATURDAY

MARCH

S	M	T	W	T	F	S
	1	2	3	4	5	6
7	8	9	10	11	12	13
14	15	16	17	18	19	20
21	22	23	24	25	26	27
28	29	30	31			

March

21  
SUNDAY

12:30  
7:00

22  
MONDAY

23  
TUESDAY

24  
WEDNESDAY

4:30  
Daniel

25  
THURSDAY

26  
FRIDAY

8:00  
Jung

27  
SATURDAY

Gerard David  
(Netherlandish, active by  
1484, died 1523)

*The Annunciation:  
The Archangel Gabriel*

Oil on wood; 30 1/4 x 24 1/8 in.  
Bequest of Mary Stillman  
Harkness, 1950 (50.145.9a)

This and a companion  
panel of the Virgin Mary  
(see the week of May 2)  
are from a large and com-  
plex altarpiece David  
painted for a church near  
Genoa, in Italy. The bril-  
liance of this depiction  
lies in the soft light and  
the stupendously swirling  
cope of Gabriel, sugges-  
tive of his swift arrival in  
the Virgin's house.

MARCH

S	M	T	W	T	F	S
	1	2	3	4	5	6
7	8	9	10	11	12	13
14	15	16	17	18	19	20
21	22	23	24	25	26	27
28	29	30	31			

March

*Rainey*



28  
SUNDAY

Hans Hoffmann  
(German, about  
1530-1591/92)

1  
MONDAY

*A Small Piece of Turf*  
(detail)

Gouache, watercolor, and  
charcoal on paper;  
8½ x 12¾ in.  
Purchase, Lila Acheson  
Wallace Gift, 1997  
(1997.20)

2  
TUESDAY

Hoffmann here responds  
to the challenge of de-  
scribing a piece of turf as  
a microenvironment. In  
doing so he was following  
the lead of his great com-  
patriot Albrecht Dürer.  
The drawing reminds  
us that the Renaissance  
window did not look out  
only on distant vistas.

*Just*

3  
WEDNESDAY

4  
THURSDAY

5  
FRIDAY

*Ag. man*

MARCH

S	M	T	W	T	F	S
	1	2	3	4	5	6
7	8	9	10	11	12	13
14	15	16	17	18	19	20
21	22	23	24	25	26	27
28	29	30	31			

6  
SATURDAY

*February-March*

7  
SUNDAY



Albrecht Dürer  
(German, 1471-1528)

*The Virgin and Child  
with Saint Anne*

Oil on wood; 23 3/8 x 19 3/8 in.  
Bequest of Benjamin  
Altman, 1913 (14.40.633)

This is a painting of  
divine genealogy: three  
generations are shown.  
The Christ child sleeps,  
adored by his young  
mother. In turn, Mary's  
mother, Saint Anne,  
seems lost in thought, pos-  
sibly of the foreknowledge  
of her grandchild's fate.  
Sleep here is an allusion  
to death.

8  
MONDAY

*R. S. Adams*

9  
TUESDAY

*Artof*

10  
WEDNESDAY

*flower show*

11  
THURSDAY

*[Handwritten scribble]*

12  
FRIDAY

*[Handwritten scribble]*

13  
SATURDAY

8:00 p.m.

**The 1999 Philadelphia Flower Show**  
**Tour #R5512—Thurs., Mar. 11, 1999**  
 Fee: \$60

	Depart	Return
FOM	7:10 a.m.	9:00 p.m.
TJL	7:30 a.m.	8:30 p.m.
BMS	8:00 a.m.	8:00 p.m.

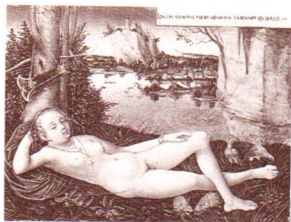
**Recreation Services**  
**BY A MINI VACATION!**  
 seats and rest room.  
 or call 222-4664.

MARCH

S	F	T	W	T	M
					1
					2
					3
					4
					5
					6
					7
					8
					9
					10
					11
					12
					13
					14
					15
					16
					17
					18
					19
					20
					21
					22
					23
					24
					25
					26
					27
					28
					29
					30
					31

March





Lucas Cranach the Elder

(German, 1472-1553)

*Nymph of the Spring*  
(detail)

Oil on wood; 6 x 8 in.  
Robert Lehman Collection,  
1975 (1975.I.136)

This seductive nymph addresses us with a Latin inscription that reads, "I am the nymph of the sacred spring; do not disturb my sleep; I am resting."

*St. Valentine's Day*

*Lu Fla*

14  
SUNDAY

*Presidents' Day*

*en route*

15  
MONDAY

*Sick*

*Ash Wednesday*

16  
TUESDAY

17  
WEDNESDAY

18  
THURSDAY

19  
FRIDAY

20  
SATURDAY

FEBRUARY

S	M	T	W	T	F	S
	1	2	3	4	5	6
7	8	9	10	11	12	13
14	15	16	17	18	19	20
21	22	23	24	25	26	27
28						

*February*

21  
SUNDAY

*Young's*

22  
MONDAY

*Washington's Birthday*

23  
TUESDAY

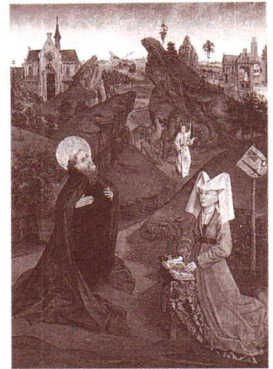
24  
WEDNESDAY

25  
THURSDAY

*Latin  
Bible*

26  
FRIDAY

27  
SATURDAY



Northern French  
Painter

(about 1450)

*The Legend of Saint  
Anthony Abbot*  
(detail)

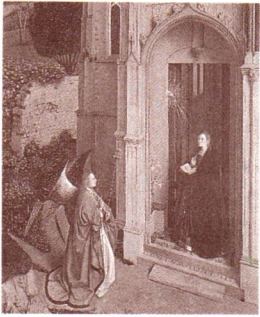
Oil on wood; 45 x 31 in.  
The Friedsam Collection,  
Bequest of Michael  
Friedsam, 1931  
(31.100.110-11)

In the Gothic building in the background, the ailing king of Palestine is told by an angel that, in order to recover, he must send food and water to Saint Anthony and his monks, who are starving in the desert. In the foreground of our detail, the angel guides a pair of camels laden with provisions for the saint.

FEBRUARY

S	M	T	W	T	F	S
	1	2	3	4	5	6
7	8	9	10	11	12	13
14	15	16	17	18	19	20
21	22	23	24	25	26	27
28						

*February*



Attributed to Petrus Christus  
(Netherlandish, active by 1444, died 1475/76)

*The Annunciation*  
(detail)

Oil on wood; 30½ x 25¼ in.  
The Friedsam Collection,  
Bequest of Michael Friedsam, 1931 (32.100.35)

Mallows and hollyhocks are among the flowers that can be identified in this detail of the Annunciation; both are symbols of salvation. They encroach upon the crumbling wall in a poetic suggestion of the passage of time and the advent of a new age ushered in by the angel's message.

*C. Charles  
Ball*

FEBRUARY

S	M	T	W	T	F	S
	1	2	3	4	5	6
7	8	9	10	11	12	13
14	15	16	17	18	19	20
21	22	23	24	25	26	27
28						

*2:30  
J.S. Meeting*

31  
SUNDAY

1  
MONDAY

2  
TUESDAY

3  
WEDNESDAY

4  
THURSDAY

5  
FRIDAY

6  
SATURDAY

January-February

7  
SUNDAY

8  
MONDAY

9  
TUESDAY

3:30  
Ortho!  
10  
WEDNESDAY

11  
THURSDAY

12  
FRIDAY

*Lincoln's Birthday*

10:45  
Jungo  
13  
SATURDAY



Petrus Christus  
(Netherlandish, active by  
1444, died 1475/76)

*A Goldsmith in His  
Shop, Possibly Saint  
Eligius (detail)*

Oil on wood; 39 x 33½ in.  
Robert Lehman Collection,  
1975 (1975.L.110)

The shelves of this goldsmith's shop are well stocked with both religious and secular objects: a crystal ciborium to store communion wafers, jeweled brooches and rings, sharks' teeth (talismen), a branch of coral, and packets of gems and pearls.

FEBRUARY

S	M	T	W	T	F	S
	1	2	3	4	5	6
7	8	9	10	11	12	13
14	15	16	17	18	19	20
21	22	23	24	25	26	27
28						

*February*

Albrecht Dürer  
(German, 1471-1528)

17  
SUNDAY

Studies of pillows  
(Verso of *Self-Portrait at Age Twenty-two*)

Pen and brown ink;  
11 $\frac{7}{8}$  x 7 $\frac{7}{8}$  in.  
Robert Lehman  
Collection, 1975  
(1975.1.862)

*Martin Luther King, Jr.'s Birthday observed*

18  
MONDAY

Dürer was twenty-two when he set himself the task of making variations on the theme of a punched-down pillow, using the hooklike motion of his nibbed pen to invest this object of rest with a life of its own.

19  
TUESDAY

20  
WEDNESDAY

21  
THURSDAY

22  
FRIDAY

JANUARY

S	M	T	W	T	F	S
						1 2
3	4	5	6	7	8	9
10	11	12	13	14	15	16
17	18	19	20	21	22	23
24	25	26	27	28	29	30
31						

23  
SATURDAY

January



24  
SUNDAY

25  
MONDAY

26  
TUESDAY

27  
WEDNESDAY

28  
THURSDAY

29  
FRIDAY

30  
SATURDAY

Hans Memling  
(Netherlandish, active  
about 1465, died 1494)

*Portrait of a Young  
Man*

Oil on wood; 15¼ x 11⅞ in.  
Robert Lehman Collection,  
1975 (1975.1.112)

This serenely posed sitter was one of Memling's many Italian patrons. The picture was sent back to Florence, where its view through a window was copied by a painter in the workshop of Andrea del Verrocchio for a composition of the Madonna and child.

JANUARY

S	M	T	W	T	F	S
						I 2
3	4	5	6	7	8	9
10	11	12	13	14	15	16
17	18	19	20	21	22	23
24	25	26	27	28	29	30
31						

*January*

Joachim Patinir  
(Netherlandish, active by  
1515, died 1524)

*The Penitence of Saint  
Jerome (triptych)  
(detail)*

Oil on wood; left wing 47½  
x 14 in.  
Fletcher Fund, 1936  
(36.14a-c)

No less an artist than  
Dürer referred to Patinir  
as "the good landscape  
painter" when he visited  
the Netherlands in 1521.  
There is not a detail from  
this world-view altarpiece  
that does not betray  
Patinir's response to his  
native Meuse Valley.  
(See fold-out 2 in the  
Introduction for an illus-  
tration of the full trip-  
tych.)

5:15  
C. 11.15

Review  
got done  
Jan

11:30  
ortho

3  
SUNDAY

4  
MONDAY

5  
TUESDAY

6  
WEDNESDAY

7  
THURSDAY

8  
FRIDAY

9  
SATURDAY

JANUARY

S M T W T F S  
I 2  
3 4 5 6 7 8 9  
10 11 12 13 14 15 16  
17 18 19 20 21 22 23  
24 25 26 27 28 29 30  
31

7:00  
Daniel

January

10  
SUNDAY

*Madeline*

11  
MONDAY

12  
TUESDAY

13  
WEDNESDAY

14  
THURSDAY

15  
FRIDAY

*Martin Luther King, Jr.'s Birthday*

16  
SATURDAY



Lucas Cranach the Elder

(German, 1472-1553)

*Christ Blessing the Children* (detail)

Oil on wood; 6½ x 8¼ in.  
The Jack and Belle Linsky Collection, 1982  
(1982.60.36)

The picture from which this charming detail is culled measures only 6½ x 8¼ inches. As always with Cranach, we feel that these coquetish women are sisters.

JANUARY

S	M	T	W	T	F	S
					1	2
3	4	5	6	7	8	9
10	11	12	13	14	15	16
17	18	19	20	21	22	23
24	25	26	27	28	29	30
31						

*January*