

SALUS 



2024

Photo Credit: Jesse Little, @jlitphoto

How We Design



By teaming our designers with some of the world's best and most experienced sailors, canoeist and kayakers, we continue to learn and improve. Our involvement with the CYA (Canadian Yachting Association) for example, has been invaluable with the development of the Abacus sail vest and other advancements incorporated into other Salus products.

At Salus, we are innovating because your sport is changing.

Our patented manufacturing process eliminates the hard square edges found in traditional PFD construction, making our vests soft, pliable and comfortable for your every movement. From the children's Nimbus to the Torrent Kayak Vest, the gently rounded edge is only one of many details that make Salus unique.

In the increasingly competitive international landscape, a commitment to keeping manufacturing jobs in Canada comes with challenges. Not only do Canadian manufacturers have to compete with low-cost manufacturing facilities in Asia, but as more companies move their facilities offshore and the domestic supply chain dwindles, North American made fabrics and components become difficult to source. We at Salus embrace such challenges.

We also understand that being a Canadian manufacturer has its benefits. Quality control is immediate: from materials to workmanship, addressing potential problems occurs within minutes, not days. Further, Salus' commitment to environmental responsibility is easily monitored and maintained. Quality control, environmental responsibility, creating jobs for Canadians: are all reasons to be proud to be a Canadian manufacturer.

For Salus, the most important reason to manufacture in Canada remains the people. From worker to customer, from paddling enthusiast to champion sailor, people are the inspiration for Salus' designs, innovation, and commitment to staying true to its Canadian roots.





Environment

At Salus, we are committed to sustainability. From recycling as much material as possible, to finding new use streams for scraps...we close the loop wherever possible. However one project that isn't so easy to see from the sewing room floor are the solar panels covering the entire roof of the building which generates clean green energy for the grid.

The 160 kW system, installed by local solar developer VCT Group made the installation easy with a turnkey solar solution and plays a major part in our commitment to preserving the natural environment where our customers sail, paddle, work and play on the water.



Driving an EV
around the world
4 times



9 acres of
trees reducing
greenhouse gases



Running **251**
sewing machines
24/7 all year long



CONTENTS

Bijoux	4-5
Nimbus	6-7
Comfort Fit	8
Tango	9
Eddy-Flex	10
Eddy-Air	11
Solo	12
Capri	13
Ungava	14
Torrent	15
Jazz	16
Proto	17
Paddling Accessories	18
Angler	20
Outcast	21
Skippy	23
Eclipse	24
Abacus	25
Regatta	26
Coastal	27
SeeArch	28
SAR 660	30
SAR 770	30
SAR 880	31
Additional Accessories	32
Apparel	33
Customize Your Vest	34
Social Media	35
Size Chart	36

LEGEND

- | | | | |
|--|-----------------------|---|-------------------------------------|
|  | General Boating |  | Stand Up Paddling |
|  | Canoeing |  | Water Skiing, Wake Boarding, Tubing |
|  | Recreational Kayaking |  | Dinghy Sailing |
|  | Sea Kayaking |  | Keel Boat Sailing |
|  | White Water Kayaking |  | Fishing |
|  | Tripping |  | Kayak Fishing |
|  | Guiding & Rescuing | | |



As parents, we put safety first. In designing the Salus **Bijoux**, we stepped outside the confines of existing standards to offer unprecedented security, safety and comfort for babies 9 – 25 lbs. The front design ensures that baby turns face-up from a face-forward position. The collar cradles the head when lifted by the strap or while floating. Mesh harness and short front enhance comfort sitting upright and lying down.

Three piece collar design with additional flotation on sides to cradle baby's head in center of collar for security and comfort

Easy to reach lifting strap

Easy access into vest with the two shoulder adjustment buckles

Adjustable mesh and webbing harness system for security, venting and comfort

Short front for enhanced comfort while in the sitting position

IMPORTANT: Four adjustment straps should be as snug—and secure—as possible while maintaining comfort for your baby. Once fitted, familiarize your baby and yourself with the performance of the vest in the water.

Dry-Lex Aerospace® liner for breathability, temperature control, drainage and comfort for baby

Mesh back allows the baby to lie comfortably on a blanket or baby carrier

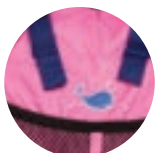


RED BACK

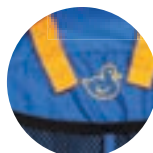
RED: CN-330



GOLD: CN-330



PINK: CN-330



BLUE: CN-330



LIME: CN-330



Winner of the Canadian Safe Boating Award (CASBA) for Best New Safety Product



See a **VIDEO** of the Bijoux in action at www.salusmarine.com

Baby: 9 - 25 lbs.

Bijoux

Cute & Cheerful

Inspired by nature and animated with colour, the Salus **Bijoux** comes to life with five new refreshing designs.



FLOWERS: CN-440



TIE DYE: CN-440



FROGS: CN-440



PALMS: CN-440



CANADIANA: CN-440

Baby: 9 - 25 lbs.

Nimbus

CHILDREN'S VEST



Photo Credit: @five2nine_ca

The Salus **Nimbus** makes water play safer for children and more relaxing for adults. All PFD's float but they can't save lives if children won't keep them on. Designed for comfort and soft to the touch, the Nimbus encourages children to wear it for hours at a time. Specially contoured to hug little bodies, children will get the best fit, mobility and safety at the water's edge.

Easy to reach lifting strap

Added soft collar for comfort and neck support

Elasticized back for a proper fit

Quick drainage superior drying and longer life provided by the bottom lining mesh

*** Inside patterned fabric is subject to change**

Soft foam and rounded edge design combine to make this PFD the most comfortable vest for children

Shorter front than conventional children's vests for enhanced comfort when sitting

Leg harness to help keep the vest in position and eliminate ride-up

Gold: CN-550

Back

Blue: CN-550 Red: CN-550 Lime: CN-550 Pink: CN-550

Available: Infant 20 - 30 lbs., Child 30 - 60 lbs., Youth 60 - 90 lbs.

Nimbus

Spirited
& Fun

Let your personality shine through in one of seven new splashy designs.



CANADIANA:
CN-660



WATERCOLOUR:
CN-660



TIE DYE PINK:
CN-660



TIE DYE BLUE:
CN-660



BLUE WAVES:
CN-660



PURPLE WAVES:
CN-660



DENIM:
CN-660

Available: Infant 20 - 30 lbs., Child 30 - 60 lbs., Youth 60 - 90 lbs.

Comfort Fit

PADDLE AND GENERAL BOATING VEST



Photo Credit: @five2nine_ca

New

New



Canadiana:
MP-550



Tie Dye:
MP-550

True to its name, the Salus **Comfort Fit** is ideal for recreational boating, canoeing and stand-up paddling. Designed with a unique combination of soft foam, mesh shoulders, and gently rounded edges, our Comfort Fit PFD fits with such ease, it feels like a part of your body. The low-profile sides and large arm holes allow for maximum mobility and enhanced arm movement while the high waist allows for easy bending and prevents ride-up (Gold does not have pockets).

Mesh shoulder for light weight and optimal freedom of arm movement for any action sport

Low profile sides for enhanced arm movement and comfort

Quick drain mesh pockets (Model MP-660 only)

Quick drainage, superior drying and longer life provided from the bottom lining mesh

Neoprene collar for added comfort against neck

Patented soft foam and rounded edge design provide unprecedented comfort and fit

Full wrap-around adjustment for a comfortable and proper fit

High cut design for ease in bending and prevention of ride-up



Red: MP-660



BACK



Gold: MP-550
(No pocket)



Red: MP-660
(Pocket)

Available in XS-S, S-M, M-L, L-XL, XL-2XL



2XL-3XL-Red only

Tango

PADDLE AND SPORT VEST



Photo Credit: @five2nine_ca

The Salus **Tango's** unique shoulder adjustment, low profile design, tapered back, high waist, soft foam, and bottom belt combine to provide the comfort and security that make this vest ideal for men, women and tweens enjoying any active water sport.



Tapered back pad for clearance in shoulder and arm movement

Open neck and shoulder design for enhanced comfort and exceptional freedom of arm and shoulder movement

Unisex styling with roomy upper body and contoured fit

3M™ reflective trim positioned high on front for greater visibility

Center positioned pocket with security clip and full drainage

Gently rounded edges for enhanced comfort and fit

High waist design for sitting comfort and to prevent the Tango from riding up

Customized and secure fit with the 6-point adjustment system

Full wrap-around waist belt to secure vest and eliminate ride-up

Red: KY-220



Back



Gold: KY-220



Available in XS-M, M-XL, XL-3XL

Eddy-Flex

CONTOURED PADDLE AND SPORT VEST

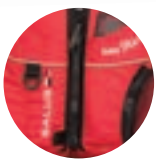


Photo Credit: @five2nine_02

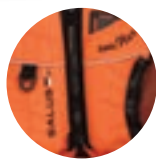
Our most popular vest, the Salus **Eddy-Flex**, offers added contouring back foam, tapered shoulders, Dry-Lex back lining, pull-forward adjustments, and an easy-grab zipper tab, making it a welcome companion to any water adventure. The addition of unisex styling, contoured fit, easy-on front zipper design, 3M™ reflective trim, rounded edges, and soft-foam construction put the Eddy-flex in a league of high-end vests with streamlined features.

- Dry-Lex back lining for optimal breathability, moisture absorption and enhanced comfort**
- Loop on back shoulder to accommodate a strobe light or hang a hydration pack**
- Contouring and flexing back pad for optimal comfort and fit**
- Tapered back pad for clearance in shoulder and arm movement**
- Lash Tab**
- 3M™ Scotchlite™ reflective trim positioned high on front for greater visibility**
- Contoured foam with a v-cut design to accommodate a female fit**
- Customized fit with 6-point adjustment system. The extra adjustment accommodates layered underclothing to extend your paddling season in comfort**
- Gently rounded edges for enhanced comfort and fit**
- Napoleon style zipper pocket with full drainage**
- Full wrap-around waist belt to secure vest and eliminate ride-up**

Blue: KYH-330



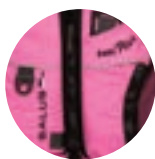
Red: KYH-330



Mango: KYH-330



Lime: KYH-330



Pink: KYH-330



Navy: KYH-330



Back

Available in XS-S, S-M, M-L, L-XL, XL-2XL

Eddy-Air

CONTOURED PADDLE
AND SPORT VEST



Photo Credit: jlitphotoagency

Closely modeled after the Eddy-Flex, the **Eddy-Air** has all the same great features with a few added touches. Two large front zippered pockets provide easy access to all your –on the water - gear and a high back mesh design that fits beautifully with most high back seats. The unisex styling, contoured fit, reflective trim, round edges and soft-foam construction all combine to make the Eddy-Air a step-up in features and comfort.

Utility band for carabiner, and secure and tidy whistle lanyard.

Two high capacity mesh pockets with zippered closure for easy access and security

Contoured foam with a V-cut designed to accommodate a comfortable female fit.

Full wrap around webbing adjustment

Customized fit with 6-point adjustment system. The extra adjustment accommodates layered under clothes to extend your season in comfort.

Utility lash tab

3M™ Scotchlite™ reflective trim front and back

Gently rounded edges for enhanced comfort and fit

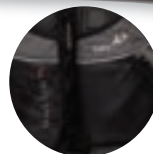
High back mesh design for enhanced comfort against seat back.



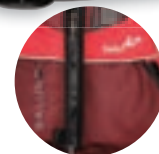
CHARCOAL: KYM-440



Available in XS-S, S-M, M-L, L-XL, XL-2XL



CHARCOAL: KYM-440



Red: KYM-440



Back

Solo

PADDLE VEST

Photo Credit: @Five2nine_ca



The Salus **Solo** makes enjoying any water sport easier by offering both enhanced comfort and security. Mesh shoulders and large armholes offer a welcomed freedom of movement while 8 points of adjustment ensure a customized fit. Convenient cargo-style pockets keep your valuables safe and fleece lined side pockets keep your hands warm. Designed with a unique combination of soft foam for comfort and Cordura® nylon material for durability, the Solo is well suited for any performance sport or the rigors of an industrial worker.

Neoprene collar for added comfort against neck

3M™ reflective piping positioned high on the front and back for greater visibility

500 Denier Cordura® construction for strength and durability

Two large cargo style pockets and fleece lined hand warmer pockets

Full wrap-around waist belt to secure vest and eliminate ride-up

Adjustable shoulder straps for a secure fit and to customize length of vest

Mesh shoulder for light weight and optimal freedom of arm movement for any action sport

Low profile sides for enhanced arm movement and comfort

Soft foam and rounded edge design provide unprecedented comfort and fit

Quick drainage, superior drying and longer life provided from the bottom lining mesh

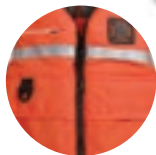
High cut design for ease of bending and prevention of ride-up



Red: KY-330



Back



Mango: KY-330

Available in XS-S, S-M, M-L, L-XL, XL-2XL, 2XL-3XL



Capri

CONTOURED
PERFORMANCE VEST

Photo Credit: @explorethebackcountry



Our **Capri** is designed for performance, but molded for comfort with a design that curves in all the right places, making it an ideal PFD for men and women. The roomy and contoured top combined with soft foam construction, fleece hand warmer pockets, two zippered security pockets and full length reflective trim, make the Capri a welcome companion on any open water adventure.

Red Capri is sold as a unisex vest.

Women's contour

Gently rounded edges for enhanced comfort

2 zipper secured mesh pockets

Fleece lined hand warmer pockets

Full wrap-around waist belt to secure vest and eliminate ride-up

6 points of adjustment for a tailored, comfort and secure fit

Contoured soft foam with a V-cut for a female fit

3M™ reflective trim front and back

Utility lash tab



Red: KYW-440

Red Capri does not have the flower embroidery on the back and is labeled and sold as a **unisex vest**.



on lavender & celery only



Back



Lavender: KYW-440



Celery: KYW-440



Available in XS-S, S-M, M-L, L-XL, XL-2XL

Ungava

KAYAK TOURING VEST



Photo Credit: Outdoor Brands

Ideal for kayak touring, the Salus **Ungava** is a unisex-style vest with all of our trademark features: soft foam, rounded edges and contour fit. Additional features, including hand-warmer pockets, the ability to attach a quick-release belt, zippered security pocket, mesh drop-down pocket for quick access, 5 lash points, and added reflective trim make the Ungava a welcome companion on any open water adventure.

Advanced lining technology in Dry-Lex Aerospace® for optimal breathability, moisture absorption and enhanced comfort

Contoured foam with a v-cut design to accommodate a female fit

Gently rounded edges for enhanced comfort and fit

Napoleon style zippered pocket for security and easy access

Carabiner attachment point

Back shoulder reflective loop for accessory attachment

Tapered back pad for clearance in shoulder and arm movement

Utility lash tab

3M™ Scotchlite™ reflective trim positioned for greater visibility

Quick access drop down mesh pocket

Fleece lined hand-warmer pockets

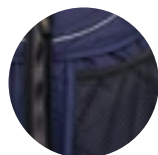
Back and front tunnel for Quick release belt (sold separately)



Gold: KY-440



Back



Navy: KY-440



Red: KY-440



Available in S-M, M-L, L-XL, XL-2XL

If you have taken to vast open water in a small kayak, then you know the lure, freedom and dangers all combine for a stimulating and inspiring adventure. This is why we have named our newest touring kayak vest the Ungava. Named after the northern body of water of Ungava Bay...an Inuit term meaning "Towards the Open Water".

Torrent

KAYAK GUIDE VEST



Photo Credit: @Five2nine_ca

The Salus **Torrent** was inspired by those who seek the most out of each adventure. The Torrent hugs, bends and reaches with you, giving you the freedom to experience your adventure to its fullest. Designed to attach a quick release belt and tow-line, the Torrent easily converts into the ideal guide or tripping vest.

Full back spinal protection for those "unexpected" spills and sudden impacts

Contoured and tapered back for enhanced comfort

The uni-slide adjustment ensures the tension is equalized on both shoulders. This unique system tides the straps and buckles by hiding them under the front chest pocket

Advanced lining technology in the Dry-Lex Aerospace® for optimal breathability, moisture absorption and enhanced comfort

Knife garage stabilizes and protects the leading edge of the knife and prevents it from becoming caught or dislodged

Pigtail retractor made of durable urethane coil and gear clip to keep essentials close—and quick—at hand

Large, angled front chest pocket that, even full, is positioned to allow unrestricted arm movement

Micro and macro belt adjustments allow each paddler to customize the placement of the buckles for convenience, optimal fit and enhanced comfort

Removable biner pouch that stabilizes and tides your biner

Red: KY-770

Accommodates quick release belt (sold separately)

**CAUTION:
WEARING THE TORRENT MAY CAUSE
YOU TO FORGET ABOUT WORK!**



Available in S-M, M-L, L-XL, XL-2XL



Back



Black: KY-770

Jazz

FREESTYLE KAYAK VEST



Photo Credit: @Five2nine_ca

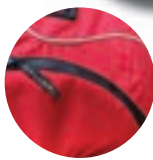
Inspired by pro-paddlers and adrenaline junkies, the Salus **Jazz** freestyle vest revolutionizes white-water PFD design. The innovative, new rocker shape contours to your torso as you bend and reach, allowing full range of motion. Combine the rocker with sculpted, low-profile foam placement in a streamlined construction and you have a superb performance vest.

- Soft, comfortable Dry-Lex Aerospace® lining**
- Full spine protection with a contoured, tapered back. Easy, reliable pullover design**
- Durable 500 Denier Cordura® shell**
- Large interior zipped pocket with key loop**
- Impact resistant foam for rib-protection**
- Neoprene waist-band for comfort and fit**
- 3M™ Scotchlite™ reflective trim for greater visibility**
- Lash tab**
- Low-riding, sculpted foam placement for enhanced range of motion**
- Independent shoulder and side adjustments tucked out of the way, inside the vest, for a clean and streamlined design**
- Rocker-design contours to your torso as you bend and reach for an uninhibited range of motion**

Black: KY-880



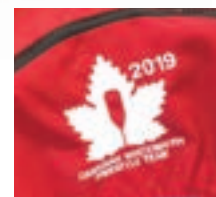
Back



Red: KY-880



Available in S-M, M-L, L-XL, XL-2XL



As worn by the Canadian Whitewater Freestyle Team

Proto

WHITE WATER
CROSS-OVER VEST



The Salus **Proto** is an ideal white-water cross-over vest for play boating as well as guiding, river running and tripping. Strip it down for play boating with the ability to conceal most of the webbing and adjustments for a clean, streamlined vest. Or, gear it up with the quick-release belt, tow line, river knife, strobe, and hydration pack to make it a great choice for guiding or long river trips.

Hydration back pouch holds both the 1.5 and 2 litre Camelbak® and Platypus® bladders, is fully covered and hidden from the sun (not included)

Dry-Lex Aerospacer® liner for venting

The hydration hose runs through the tunnel in the shoulder (not included)

Removable quick release belt (included)

Embroidered image will vary

Fully trimmed front, back and shoulders with 3M™ reflective piping

The carabiner quick release feature is modular so this can be moved to any one of the five locations on the vest

** Pigtail tether sold separately*

Utility lash tab with knife garage

Zippered pocket for easy access



Gold: KY-990

Second Utility lash tab

Independent shoulder and side adjustments tucked out of the way, inside the vest

Interior zippered pocket for added security



Back

Red: KY-990



Available in S-M, M-L, L-XL, XL-2XL

Accessories

PADDLING ACCESSORIES

Sea - Throw n' Tow

50 ft, TNT-550 (Yellow / Black)



This two-in-one Throw n' Tow is an ideal companion for both white water and sea kayaking. 15 meter polypropylene line with spectra core and elasticized extension to absorb the shock when towing. Paddle Carabiner and extended bib for throwing leverage.

Amigo

Throw Bag - 50 ft Para Cord - TB-550



This handy and compact side worn tether (with light & whistle included) provides all of the legal requirements for SUP and other small craft. The extended bib allows for quick and easy stuffing and provides leverage to throw the bag the full 50 feet.

Amicus

Throw Bag - 80 ft 1/4" Cord - TB-880



The conical shaped bag allows for optimal unfurling while the extended bib allows for quick and easy stuffing and leverage to throw the bag to its full 80 ft. length. Also available in Lime and Pink.

River - Tow Line

3 M, TL-330 (Yellow / Black)

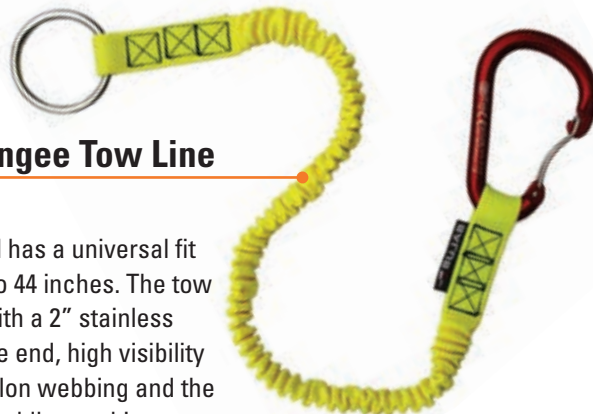
Sleek, low profile design keeps this little guy out of your way. Simple easy to release closure holds carabiner and keeps towline inside.



Pig Tail - Bungee Tow Line

PT-440 (Yellow)

The Salus Pig Tail has a universal fit extends from 26 to 44 inches. The tow system is fitted with a 2" stainless steel O-ring at one end, high visibility yellow bungee nylon webbing and the Kong wire-gate paddle carabiner.



ENVIRONMENT

At Salus, we conscientiously strive to conserve resources and create less waste. We've found ways to reduce, re-use and recycle left-over materials- foam scraps become astro turf underlay or packing material. We conserve resources by maximizing natural light and minimizing air conditioning. We coordinate shipping-the truck that leaves Salus with recycling scraps returns with new materials for production.

Think globally, act locally.

We take that phrase to heart.



Angler

FISHING VEST



Photo Credit: @Five2nine_ca

The Salus **Angler** offers a unique combination of style, comfort and utility. The mesh design and soft foam provide exceptional comfort, which, in combination with the low profile sides and cargo-style pockets with hand warmers, make the Angler a welcome companion on any fishing trip.

Low profile sides and mesh shoulders for enhanced arm movement and comfort

Pigtail retractor made of durable urethane coil and gear clip to keep essentials close—and quick-at hand

Gently rounded edges for enhanced comfort and fit

Back hanging ring for landing net

Fishing rod loop to steady and hold the rod so you don't have to

Large cargo style pockets with flap and Velcro® closure

Two fleece lined pockets offer exceptional comfort and warmth

High cut design for ease of bending and prevention of ride-up



Tan: AG-770



Back



Available in M-L, L-XL, XL-2XL, 2XL-3XL, 3X-4XL (limited)

Outcast

KAYAK FISHING VEST



Photo Credit: @Five2nine_ca

Whether you're a paddler who likes to fish, or an angler who likes to paddle, the Salus **Outcast** is the ideal PFD, offering a unique combination of kayak and fishing features in one vest. Contoured fit, soft foam, rounded edges, and high-back construction make the Kayak Angler perfect for fishing in comfort. Two large front pockets and gear-clips spin the Kayak Angler into a must-have piece of fishing gear.

Six point adjustment for ultimate comfort and a perfect fit. The extra adjustment accommodates layered underclothing to extend your fishing season in comfort

Utility lash tab

Gently rounded edges for enhanced comfort and fit



Tuck-away drink pocket

Back hang ring for landing net



Back



Charcoal: KAM-770

Contoured front foam for enhanced comfort

Rod Stabilizer

Advanced lining technology in the Dry-Lex Aerospace® for optimal breathability, moisture absorption and enhanced comfort

Large zipper pockets with easy access and peek-a-boo camo



High back mesh design for enhanced comfort against seat back.



Available in M-L, L-XL, XL-2XL, 2XL-3XL



QUALITY

Salus is a small manufacturer with a big difference. We make comfortable PFD's that deserve to be worn. This difference didn't come by chance. We listened to our customers, we challenged the standards, we did our thinking "outside the box" and we committed to producing each vest to the highest standard possible—PFD's that we're proud to label with the Salus name.

Skippy

DOG VEST



Most dogs can swim, but they have more fun in the water and you have greater peace of mind, when they wear the Salus **Skippy** dog vest. The Skippy uses Cordura® nylon for durability. Flotation under the belly and chest give greater buoyancy, lift and comfort against the belly-lifting straps. Tummy-saver padding helps protect active dogs. Two-handle straps make it easy to grab and lift your heavier playmate out of the water.

Two-handle design to help lift your heavier dogs

Reflective piping is visible with dog in or out of the water

Side mesh pocket for leash and doggy treats

Easy on design with three buckle adjustment



Padding under the dog for optimal buoyancy

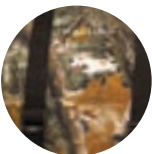
Padding under the belly and chest for added comfort when lifting your friend out of the water



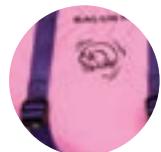
Awarded 4 out of 4 paws



TIE DYE: DV-660



CAMO: DV-660



PINK: DV-660

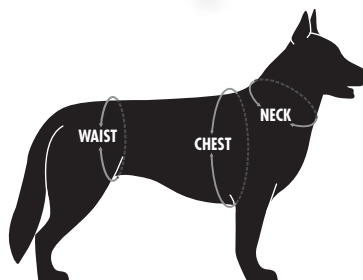


MANGO: DV-660



RED: DV-660

Canadian Coast Dog Approved 😊 DV-660



Dog Vest Size Chart

Size	Weight Range	Neck	Chest	Waist
XS	5 - 10 lbs	10" - 13"	19.5" - 25"	19" - 24"
S	10 - 30 lbs	14" - 17"	25" - 29"	22.5" - 28"
M	30 - 60 lbs	15" - 22"	28.5" - 36"	26.5" - 35"
L	60 - 100 lbs	19.5" - 27.5"	31" - 37"	27.5" - 36"
XL	100 - 130 lbs	20.5" - 29"	33" - 42"	30" - 41"

Eclipse

COMPETITIVE SAILING VEST

Photo Credit:
Alex Byczko @grandfromage33



This thin, low profile, clean, and comfortable design makes the Salus **Eclipse** the ideal PFD for agility and speed, while the high cut design makes it an excellent choice for hiking and trapezing. The Eclipse is a 50 Newton floatation aid and is **NOT** transport Canada approved. Designed to the European ISO 12402 50 Newton Standards.

Larger zipper pocket provides plenty of space for snacks and tools.

Dry-lex on the inside for drainage, breathability and comfort.

Side zipper and security clasp closure.

Neoprene shoulder straps for security and a comfortable fit.

Light nylon fabric to reduce weight.

Neoprene wraps fully around the outside of the jacket to create a comfortable form fitting and low snag design.

Black: SL-770 **Red: SL-770**

Grey: SL-770 FRONT

Back

2.5 inch rubber gripper keeps jacket from riding up and sliding around during use

Large 1.5 inch strap for ease of handling and comfort.

No snag design with the hidden belt tunnel



Available in XS, S, M, L, XL, 2XL



Photo Credit:
Alex Byczko @grandfromage33

The thrill and satisfaction of harnessing the wind and directing your dinghy to move and perform is an experience only sailors know. Designed for sailors by sailors, the Salus **Abacus** provides you with the freedom to get the most out of your adventures. The tapered front, 8-points of adjustment, ergonomic pocket, and rounded edges combine to enhance your fit, comfort and performance while on the water—or in it!

Covered adjustment buckle to avoid tangle in rigging

Fully adjustable neoprene shoulder and waistband for ultimate comfort and perfect fit. The extra adjustment accommodates layered underclothing to extend your sailing season in comfort

Dry-Lex Aerospace®—the most advanced lining for comfort, temperature control and moisture absorption

Ergonomically positioned pocket zipper for fast and easy access

Side entry zipper suitable for easy donning and quick access to splash top

Tailored and secure fit with the 8 point adjustment system. Boom clearance provided by low cut and taper at shoulders

Tapered foam on the front panel lets you climb quickly back on board from the water, unlike traditional vests, which hold you back. Easy slide nylon webbing construction

Split back design provides concentrated tightening from the waist harness while allowing a loose fit on the back for comfort

Large pocket centralized on chest that—even full—is positioned to allow unrestricted arm movement. Mesh design for quick drainage

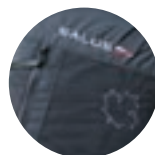
High cut front for ease of bending and to accommodate new style trapeze harness



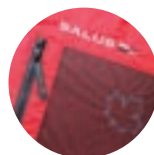
Gold: SL-660



Available in S-M, M-L, L-XL



Black: SL-660



Red: SL-660



Back

Regatta

CONTOURED SAIL AND SPORT VEST

Photo Credit: Sara & Jayden



The Salus **Regatta's** easy-on, front-zipper design offers a unique contoured fit, blended with high-end sailing features that make this vest ideal for both men and women. The tapered front, 3M™ reflective trim, 6-points of adjustment, soft foam, rounded edges, and Dry-Lex breathable liner combine to enhance the fit and provide excellent performance features for all caliber of sailors.

Customized and secure fit with the 6-point adjustment system. Extra adjustment accommodates layered underclothing to extend your sailing season in comfort

Tapered back pad for clearance in shoulder and arm movement

Gently rounded edges for enhanced comfort and fit

Advanced lining technology in the Dry-Lex Aerospace® for optimal breathability, moisture absorption and enhanced comfort

Boom clearance provided by low cut and taper at the front and back shoulders

Unisex styling with roomy upper body and contoured fit

3M™ reflective trim positioned high on front and back for greater visibility

Napoleon style zippered pocket with full drainage

Low profile design accommodates trapeze harness and allows for easy bending

Full wrap-around waist belt to secure vest and eliminate ride-up



Red: SL-440



Back



Gold: SL-440



Available in XS-S, S-M, M-L, L-XL, XL-2XL



Photo Credit: Alex Byczko @grandfromage33

Ducking out of the weather isn't often an option on a sailboat. The Salus **Coastal's** durable nylon harness with stainless-steel D-rings will help keep you safely tethered to your boat, while extra padding and hand-warming pockets protect you from the elements. 360° reflective piping sewn high on the shoulders keeps you visible, even in the worst weather. Designed with a unique combination of soft foam, mesh shoulders, large armholes, and rounded edges, the Coastal provides maximum comfort, mobility and superior fit.

Neoprene collar for comfort against the neck

Patented round edge with a low profile design for unprecedented comfort and fit

2 large zippered pockets with ergonomic access and drainage

Nylon safety harness with stainless steel D-rings for secure tethering; harness is removable, or can be stowed within the vest

2 hand-warming fleece pockets

High cut design for ease of bending and prevention of ride-up

Mesh shoulders for optimal freedom of movement, cooling and comfort

3M™ Scotchlite™ reflective trim with 360° visibility in and out of the water

Utility tab for strobe, radio, GPS or MOB alert

Dry-Lex Aerospacer® the most advanced lining for breathability, moisture absorption and comfort, used in front and back

Easy access drop down pocket. Convenient location for a radio and water bottle



Red: SL-550

Leg Harness (not included, pg 32) snaps easily to internal harness system to comply with 2014 ISAF offshore special regulations.



SOLD SEPARATELY



Harness system can be securely stored using double snap fastener



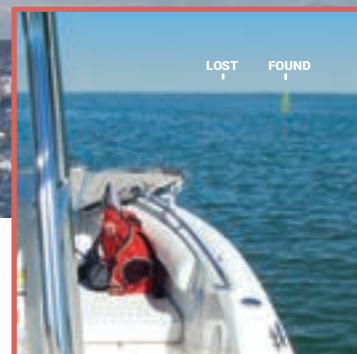
Back



Available in S-M, M-L, L-XL, XL-2XL, 2XL-3XL


SeeArch

MARKER & RECOVERY DEVICE



Surviving a crew-overboard incident begins by staying afloat **and** being spotted by rescuers. Apart from the colour of your PFD and its reflective trim, there will be very little of you visible to rescuers. Add in the swell and chop of the water, finding you may be nearly impossible.

The **SeeArch** is one of the most important pieces of equipment you could wear. Designed to be worn comfortably around your waist, the SeeArch is the marker and rescue device that is **always with you**. A simple pull of a cord deploys the five foot high-visibility arch helping rescuers spot you while providing added buoyancy. Its length helps rescuers get you back on board and its compact size also makes it a quick throwable device, providing you and your crew added peace of mind. Be buoyant, be seen, be rescued!

Note: The SeeArch is a supplemental safety and rescue device. It is not an approved PFD. 

Manual inflation pull tab with backup oral inflation tube

High visibility accent colour

Accessory pocket with a secure zipper closure

Strong - padded 1.5" nylon webbing belt

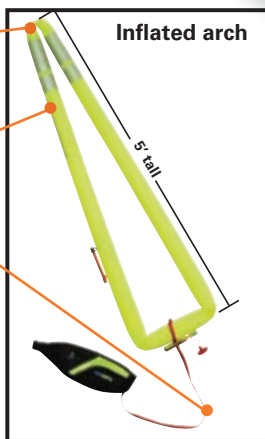
Breathable Dry-lex provides comfortable soft padding against your body during use.

Durable to act as a lifting and retrieval harness

Light weight and able to wave the SeeArch to attract attention

Tethered to waist belt for security and convenience

ONE SIZE fits most



Back pocket opens to replace Arming Kit



Winner of the Canadian Safe Boating Award (CASBA) for Best New Safety Product



INNOVATION

At Salus, we're innovating because your sport is changing. Our patented manufacturing process eliminates the hard square edges found in traditional PFD construction, making our vests soft, pliable and comfortable for your every movement. From the children's Nimbus to the Torrent Kayak Vest, the gently rounded edge is only one of many details that make Salus vests unique.

The Salus **SAR** vests were designed for swift water, ice water and shore base rescue professionals.

The Unique and easy donning adjustment system combined with the one-size fits all design is paramount in getting your team into position quickly. And when seconds count, these two critical features can often make the difference between saving a life and recovering a body.

The 100 newton / 22 lbs buoyant force is ideal for fast moving aerated water and to float you and the person (or animal) you are rescuing.

The large arm holes allow the rescuer full range of motion while the soft foam construction and high waist design permit easy bending that in combination make these SAR vests extremely comfortable in an often uncomfortable and fast moving situation.

SAR-660

Easy grab front shoulder adjustment

Convenient, two-way access, accessory pocket. With security zipper.

Large 1 1/2 webbing for easy adjustment

High cut design for easy, unrestricted bending



ONE SIZE fits most, M-4XL
(36"-60" chest / 91-152 cm chest)



Belt style shoulder harness for convenient grab location when assisting or extraction

3M reflective trim

Large arm holes and tapered back for enhanced freedom of movement.

500 Denier Cordura nylon with UV resistant yarns for durability and strength

Operations:
SAR-660 Red



Operations Back

SAR-770

Tow line & carabiner, positioned for a one handed grab and release (model SAR 770 only)

Easy grab front shoulder adjustment

Convenient, two-way access, accessory pocket. With security zipper.

Quick release belt (model SAR 770 only)

Large 1 1/2 webbing for easy adjustment

High cut design for easy, unrestricted bending



ONE SIZE fits most, M-4XL
(36"-60" chest / 91-152 cm chest)



Belt style shoulder harness for convenient grab location when assisting or extraction

3M reflective trim

Large arm holes and tapered back for enhanced freedom of movement.

Stainless steel fittings

500 Denier Cordura nylon with UV resistant yarns for durability and strength

Technician:
SAR-770 Orange



Technician Back



Photo Credit: @szetoszeto

With all the same performance feature and benefits that are found in the SAR-770, the SAR 880 Commander also include two large cargo pockets for hauling gloves, radio, ice picks, carabiners, flashlights and more. And designed for convenience, the back is equipped with a hidden pocket that neatly stows a pair of ready-anytime leg harnesses.

SAR-880

Tow line & carabiner, positioned for a one handed grab and release

Large arm holes and tapered back for enhanced freedom of movement.

Easy grab front shoulder adjustment

Quick release belt

Large 1 1/2 webbing for easy pull forward adjustment

Nepoleon style cargo pockets with mesh gussets for drainage

High cut design for easy, unrestricted bending

Belt style shoulder harness for convenient grab location when assisting or extraction

SOLAS grade reflective trim

Convenient, two-way access, accessory pocket. With security zipper.

Stainless steel fittings

400 Denier Rip Stop nylon with UV resistant yarns for durability and strength



Commander: SAR-880 High Vis



Commander: SAR-880 Red



Back

Hidden pocket to stow ready-anytime leg harness



ONE SIZE fits most, M-4XL
(36"-60" chest / 91-152 cm chest)

Additional Accessories



SP-440



SP-440

Body Chest Sizes: Small 26" - 44", Large 36" - 54"
3 week lead time from time of approved artwork.

Salus Pinnies

Be the BEST LOOKING TEAM on the water with your CUSTOMIZED sailing pinnies.

Customize your sailing pinnies with team logos, names, sail numbers, sponsors and a whole lot of uniqueness to give you a bold and distinctive look on the water.

Our Double knit polyester fabric is made with 4-way mechanical stretch properties and provides the highest quality imaging available.

Send us your vector logo artwork and some concept ideas and our graphic department will handle the rest.

Minimum 12 pieces.

Adventure Lights

Guardian Dual Function LED Expedition Light with Clip



Visible over 1.5 km; lithium batteries last over 250 hrs; waterproof to 100 m; operates in temps -40 to +50 °C; impact resistant; dual function steady on or flashing. 12 pack mixed colours.

Quick Release Belt

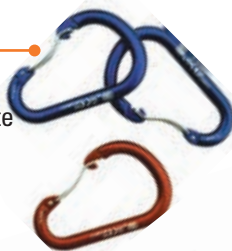
2" wide rescue belt features a quick release cam buckle and stainless steel tri-glide.



Kong Paddle Biner

Bent Gate

Large wire-gate carabiner with huge gate clearance to accommodate standard diameter paddle shafts. Weight: 71 g. Strength: closed = 22 Kn; open = 8 Kn.



Hiking Straps HS-550

Padded hiking strap with nylon webbing attachment point and adjustment loos.

Size available: 29" and 33"



Braid Accessory Cord

Premium High Tenacity Double Braid Accessory Cord

UV stabilized, abrasion, deterioration and mildew resistant. Available in 2mm orange, 3mm gold, 4mm red and 5mm blue, 328' spools



Elastic Shock Cord-Bungee

100% polypropylene black sheath. Latex core. 100% stretch. Available in 3.5 mm (328' spools) and 5.5 mm (300' spools).

IOSSO®

Mold & Mildew Cleaner - 3 gal. or 14 gal.

Removes mold, mildew, algae stains, tough dirt, grease and oil. Recommended for use on fabrics, vinyl plastic & fiberglass.



Leg Straps LS-550

Fits to both the Salus Coastal and Auto Inflatable vests to comply with 2014 ISAF offshore special regulations.

(See page 23)

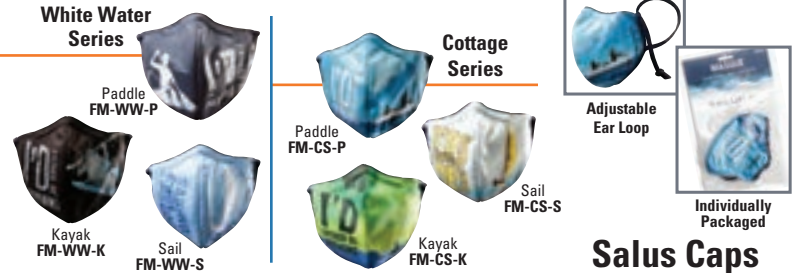


Apparel

I'd Rather Be . . . Salus Facemasks

3-ply, HEPA filtered, reusable and washable facemasks.

Lab tested with a 90% BFE rating. Soft and comfortable with a contoured fit, flexible nose piece and adjustable and elasticized ear loops. One size fits most.



Garment washed cotton Chino twill cap with cloth back strap, slip through grommet and buckle. Comes in Orange, Charcoal, Stone, Lavender and Mustard. One size fits most.

Salus Caps

Salus Rugby Shirt

Modeled after the authentic game ready rugby jersey, these shirts are made with a light weight (8 ounce) yarn dyed cotton, which is ideal for long sleeves in the summer and a comfortable layered look year-round.



Acadia Chest Stripe in Ivory/Scarlet/Navvy

4" Stripe in Navy / White

Salus Casual Crew Shirt

These light-weight cotton shirts make it easy to wear long sleeves in the summer or on the water and create a comfortable layered look year-round. Made with the finest soft 8 oz. knit cotton, the Casual weight collection is very popular in our product line.



Marine Stripe in Oxford / Ivory

Marine Stripe in Deep Ocean / White

Salus Hoodies

As a heavier weight option and a casual alternative to the rugby style jersey, the Barbarian rugby hoodies are made with the traditional game day heavy weight quality (12 ounce) cotton material. Fully lined hood, kangaroo style pouch and quality draw string.

Free embroidery on the right or left chest with orders over 12 pieces.

Chest Sizes: XS 36-38", S 38-40", M 40-42", L 42-44", XL 44-46", 2XL 46-48", 3XL 48-52"

Barbarian catalogue available upon request.



4" Stripe in White / Columbia Blue

Chest Stripe in Navy / White / Dark Red

Salus Cotton T-Shirts

Gildan 10-oz, 100% cotton preshrunk jersey knit T-Shirt with reinforced taping on neck and shoulders. Adult sizes: S, M, L, XL, 2XL



Paddle T-Shirt

Kayak T-Shirt

Sail T-Shirt



In keeping with Canadian Made quality products, Salus continues to offer six popular rugby shirts from the Barbarian Sports Wear collection.

Custom colour and striping options available. Minimum 24 pieces.

Customize your vest!

EMBROIDER YOUR LOGO &
MAKE IT YOUR OWN!

What better way to
show off your team colours
than with a high quality
custom embroidery



Melissa Harley - Embroidery



Photo Credit: Lauren & Sinead

We would love to hear from you!

It's always nice to hear from our customer and to know how you are spending your time on the water.

...And if you are able to share some great photos, we would like to also have the opportunity to share them with others on our website or catalogue.



Please send in your stories and photos to:
customerservice@salusmarine.com or share on
 facebook.com/SalusMarine or on  @salusmarine



Photo Credit: Tanya Vanthuyne



Photo Credit: Liquid Skills



Photo Credit: @carlyteresa and @kaitlabbate

Reference Chart

STANDARD VEST SIZE CHART

As a nation rich in waterways, water-play is deeply rooted in the Canadian psyche. From worker to customer, from paddling enthusiast to champion sailor, people are the inspiration for Salus Marine Wear's designs, innovation and commitment to our Canadian roots.

Environmental responsibility

We are fully committed to the "reduce, reuse, recycle" model by employing energy and resource-efficient production methods, investing in re-use projects for by-products and by sending the balance of scrap materials into recycling programs.

We are extremely pleased with our 2015 project, where, we installed 20,000 sq. ft. of solar panels on the roof of our factory to create clean and renewable sources of energy.

Made in Canada

We are proud to say that every Salus PFD is made at home in Waterloo, Ontario by Canadians who take exceptional pride in their work. Here the Salus team can closely monitor quality and employ continuous improvements to ensure the best product possible.

It's our passion...live the adventure.

STANDARD VEST SIZE CHART

Size	Weight Range		Chest Sizes	
Bijoux	9 - 25 lbs	4 - 11 kg	12" - 18"	30cm - 46cm
Infant	20 - 30 lbs	9 - 14 kg	16" - 22"	41cm - 56cm
Child	30 - 60 lbs	14 - 27 kg	18" - 26"	46cm - 66cm
Youth	60 - 90 lbs	27 - 41 kg	22" - 32"	56cm - 81cm
XS - M	90+ lbs	41+ kg	28" - 40"	71cm - 102cm
M - XL	90+ lbs	41+ kg	36" - 48"	91cm - 122cm
XL - 3XL	90+ lbs	41+ kg	44" - 56"	112cm - 142cm
XS - S	90+ lbs	41+ kg	28" - 36"	71cm - 91cm
S - M	90+ lbs	41+ kg	32" - 40"	81cm - 102cm
M - L	90+ lbs	41+ kg	36" - 44"	91cm - 112cm
L - XL	90+ lbs	41+ kg	40" - 48"	102cm - 122cm
XL - 2XL	90+ lbs	41+ kg	44" - 52"	112cm - 132cm
2XL - 3XL	90+ lbs	41+ kg	48" - 56"	122cm - 142cm
Inflatables	80+ lbs	36+ kg	30" - 52"	76cm - 132cm

Sizes listed are based on an average of men and women with various body types wearing only a bathing suit and T-shirt. Consider other gear and clothing when fitting your SALUS PFD.

With the exception of the Bijoux (for which there is no standard) and Skippy Dog Vest, all Salus PFD's are designed in compliance with Canadian General Standards Board / CGSB Standard 65.11-M88, tested by Underwriters Laboratories of Canada / ULC, and approved by Transport Canada / TC.

Photo Credit: @LitzPhotography

660 Superior Drive, Waterloo, Ontario, Canada N2V 2C6

Customer Service 1-877-418-9998

Tel: 519-579-3131 Fax: 519-749-0041

www.salusmarine.com

Please recycle this catalogue.

Proud to sponsor and partner with:

